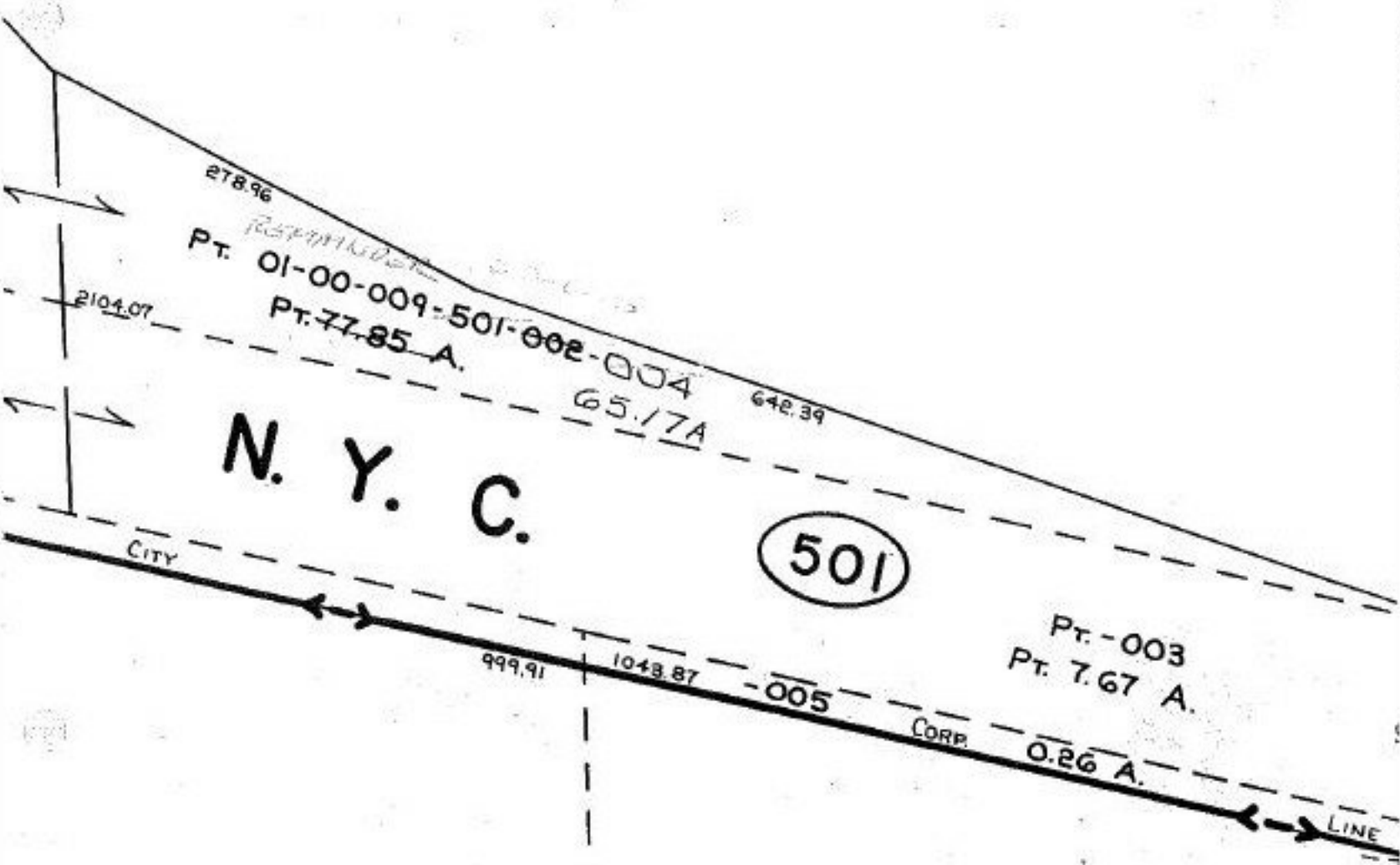


21360



N. Y. C.

501

Pt. -003  
Pt. 7.67 A.

-005  
2.32 A.

P.P. NO. 01-00-009-501-  
PRIOR INST: DV.1226/552

21360

APPROVED  
LORAIN CO.  
MAP DEPT

DATE 7-24-95

PAGE 1-00-024-B

BY CAROLYN  
FRANCIS

# 21360

COOPER FOSTER  
624.04

SEE 1-00-025-B