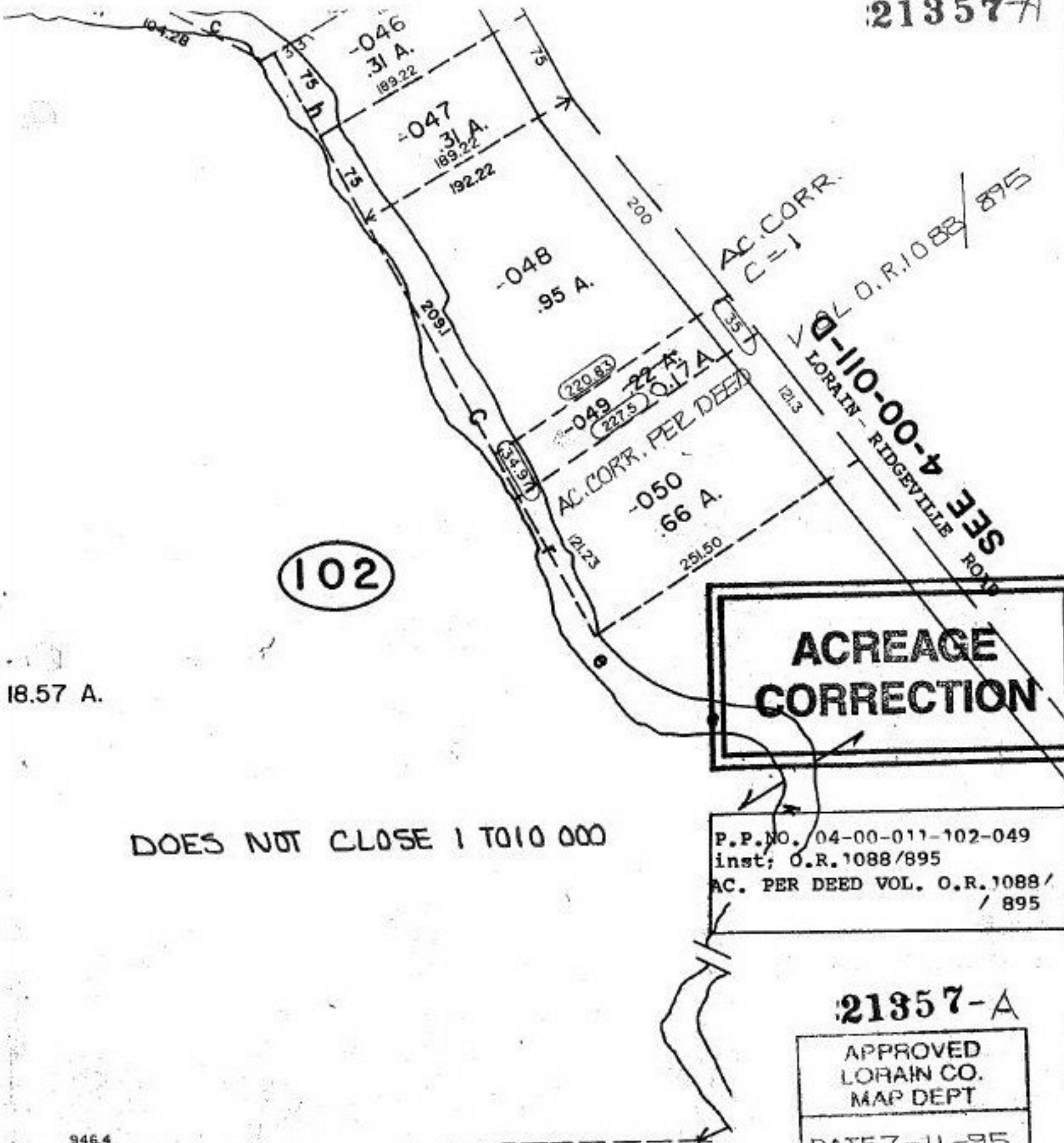


21357-A



102

18.57 A.

DOES NOT CLOSE 1 TO 10 000

**ACREAGE  
CORRECTION**

P.P. NO. 04-00-011-102-049  
inst; O.R. 1088/895  
AC. PER DEED VOL. O.R. 1088/  
895

21357-A

APPROVED LORAIN CO. MAP DEPT
DATE 7-11-95
PAGE 4-00-011-C
BY CAROLYN FRANCIS
21357-A

-052  
8.85 A.

946.4