

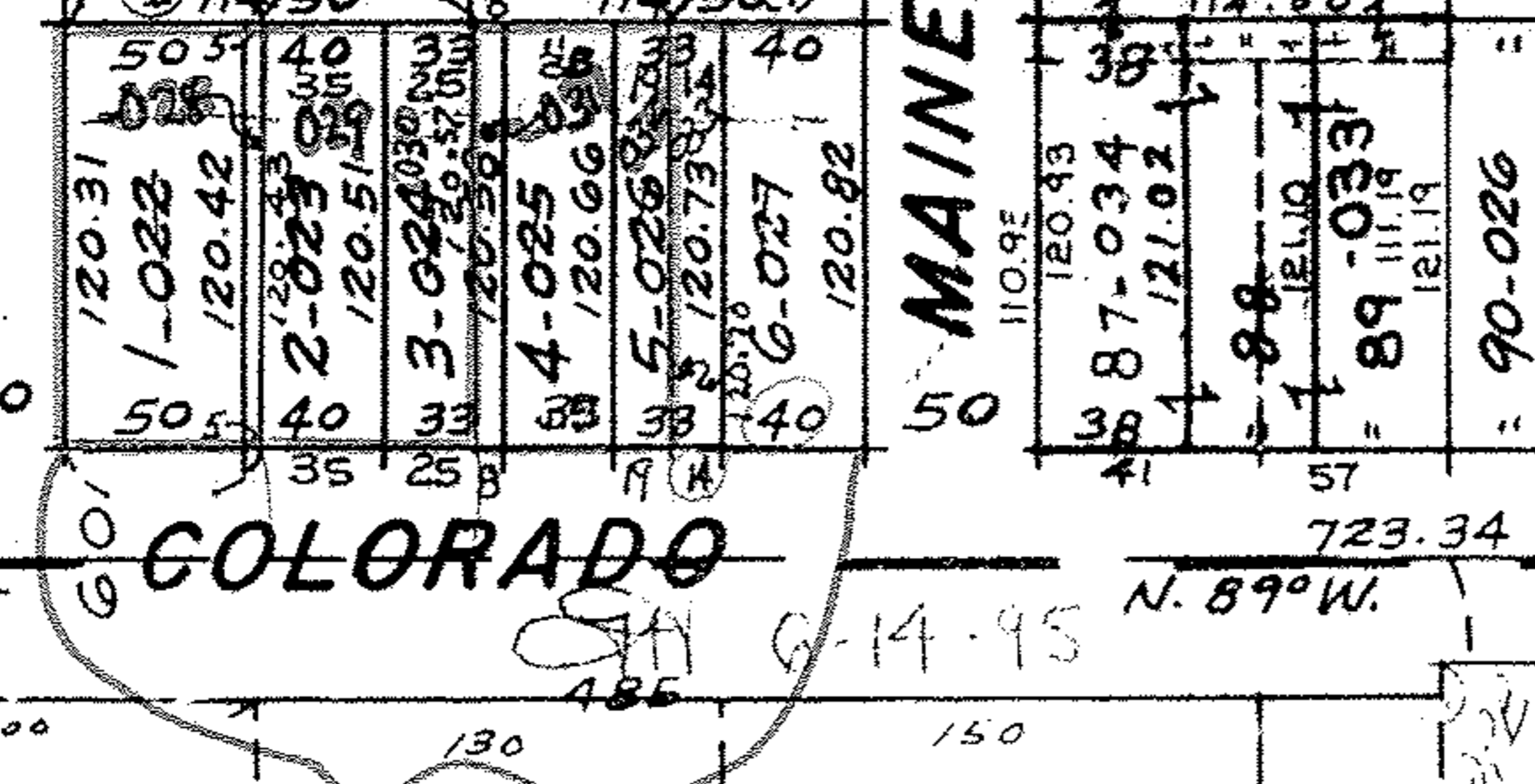
DETAIL 1"=40'

| LOT    | SIZE | SUBLOT               |
|--------|------|----------------------|
| 17-003 |      |                      |
| 16     |      |                      |
| 15-004 | -022 | 50.00 X 120.42       |
| 14-005 | -028 | 5.00 X 120.43 Pt. 2  |
| 13-006 | -029 | 35.00 X 120.51 Pt. 2 |
| 12-007 | -030 | 25.00 X 120.57 Pt. 3 |
| 11-008 | -031 | 8.00 X 120.58 Pt. 3  |
| 10-009 | -032 | 19.00 X 120.70 Pt. 5 |
| 9-010  | -033 | 14.00 X 120.73 Pt. 5 |
| 8-011  | -025 | 33.00 X 120.66 4     |
| 7-012  | -027 | 40.00 X 121.00 6     |

|      |        |    |
|------|--------|----|
| 194  | 115.50 | 1  |
| -003 |        |    |
| 193  | 115.49 | 36 |
| -004 |        |    |
| 192  | 115.48 | 35 |
| -005 |        |    |
| 191  | 115.47 | 1  |
| -006 |        |    |
| 190  | 115.45 | 1  |
| -007 |        |    |
| 189  | 115.44 | 1  |
| 106  |        | 1  |
| 188  | 115.43 | 1  |
| -007 |        |    |
| 187  | 115.42 | 1  |
|      | 115.41 | 1  |

10-053-104-  
or 1046/442  
NF.  
DANE A.  
SURVEYOR  
HAPONEK & ASSOC.

HIGHWAY



MAINE  
723.34  
N. 89° W.

SEE DETAIL ABOVE

**21340**  
APPROVED  
LORAIN CO.  
MAP DEPT  
DATE 5-23-95  
PAGE 3-00-053 A  
BY CAROLYN  
FRANCIS  
REDD, FOR LEGIBILITY  
T. Maine 12/17/98