

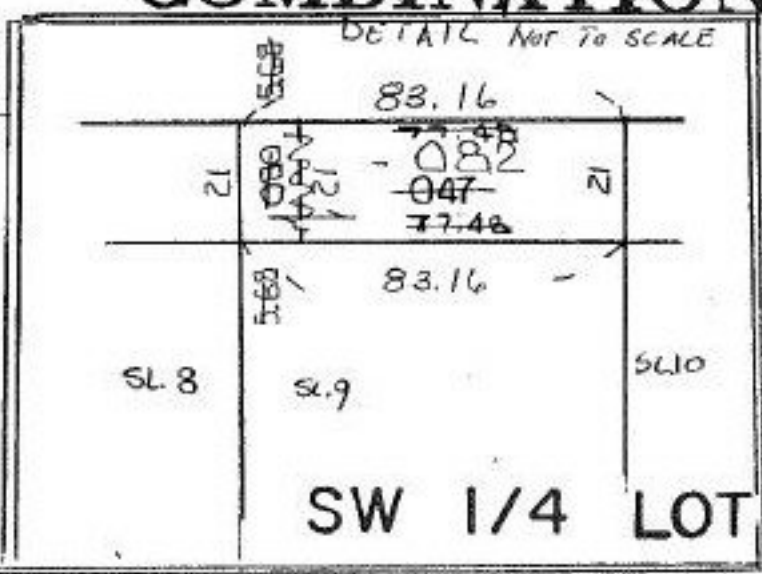
84.00  
 78.32  
 5.68  
 83.16  
 5.68  
 77.48

VOL. 13  
 PG. 40

18  
 58

**COMBINATION**

5.68  
 +77.48  
 83.16



P.P. NO. 18-00-021-110  
 PRIOR INST: O.R. 1000/811  
 CLOSURE: 1:INF.  
 SURVEYED BY: THOMAS M. SNEZEK  
 REG. SURVEYOR

APPROVED  
 LORAIN CO.  
 MAP DEPT  
 DATE 5-5-95  
 PAGE 18-00-021-C  
 BY CAROLYN  
 FRANCIS  
 # 21321