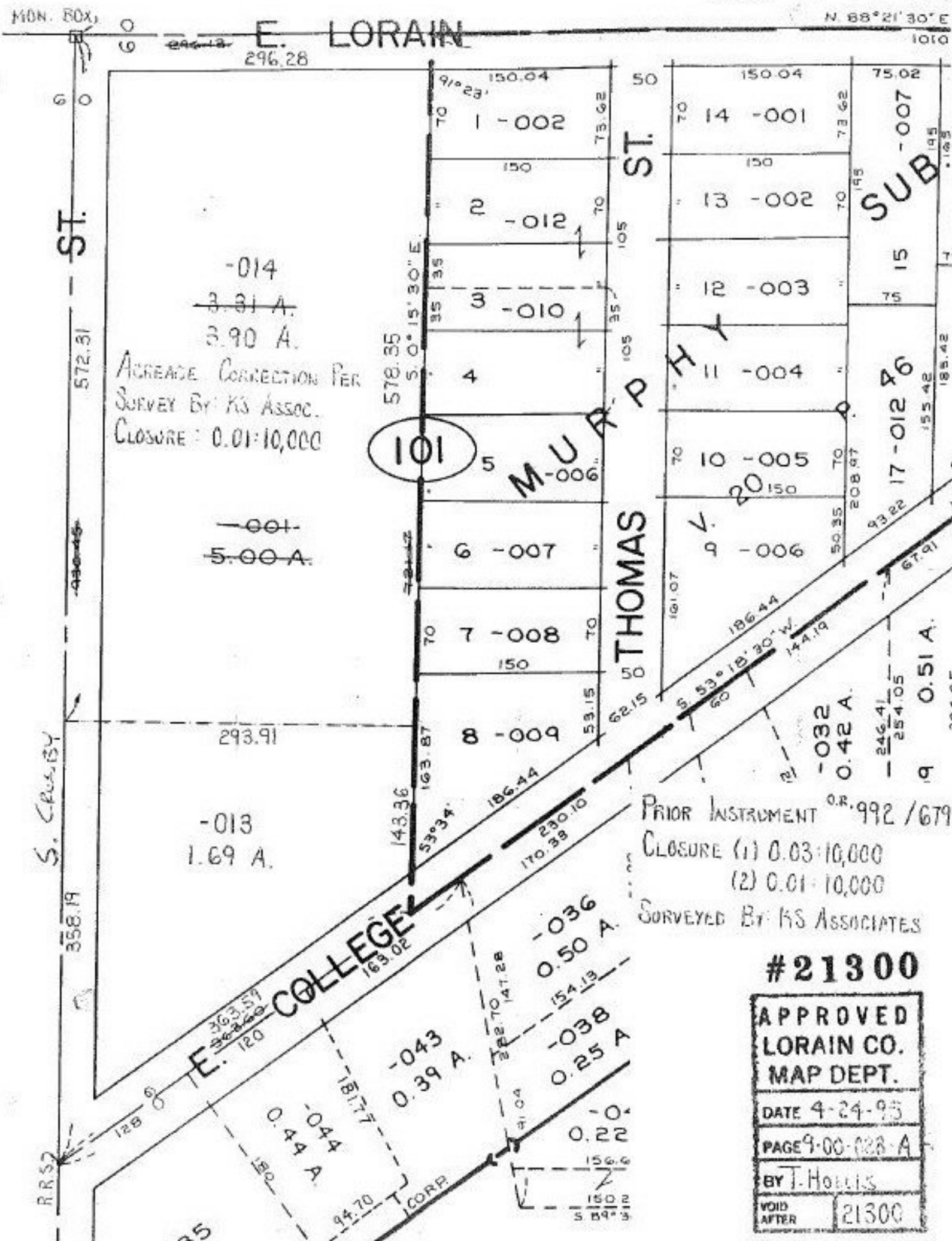


21300

N 88° 21' 30" E
1010



-014
~~3.81 A.~~
 3.90 A.
 AGREEMENT CORRECTION PER
 SURVEY BY: KS ASSOC.
 CLOSURE: 0.01:10,000

~~-001-~~
 5.00 A.

-013
 1.69 A.

101

MURPHY

THOMAS

SUB

PRIOR INSTRUMENT O.R. 992 / 679
 CLOSURE (1) 0.03:10,000
 (2) 0.01:10,000
 SURVEYED BY: KS ASSOCIATES

#21300

APPROVED
 LORAIN CO.
 MAP DEPT.
 DATE 4-24-95
 PAGE 9-00-028-A
 BY J. Hovels
 VOID AFTER 21300