

**COMBINATION**

05-00-061-104-  
-025 9.88A  
-026 9.88A  
-029 24.00A  
-030 0.65A  
-032 26.35A

21297

APPROVED LORAIN CO. MAP DEPT
DATE 4-7-95
PAGE 5-00-061A
BY GARDYIN FRANGLI
# 21297

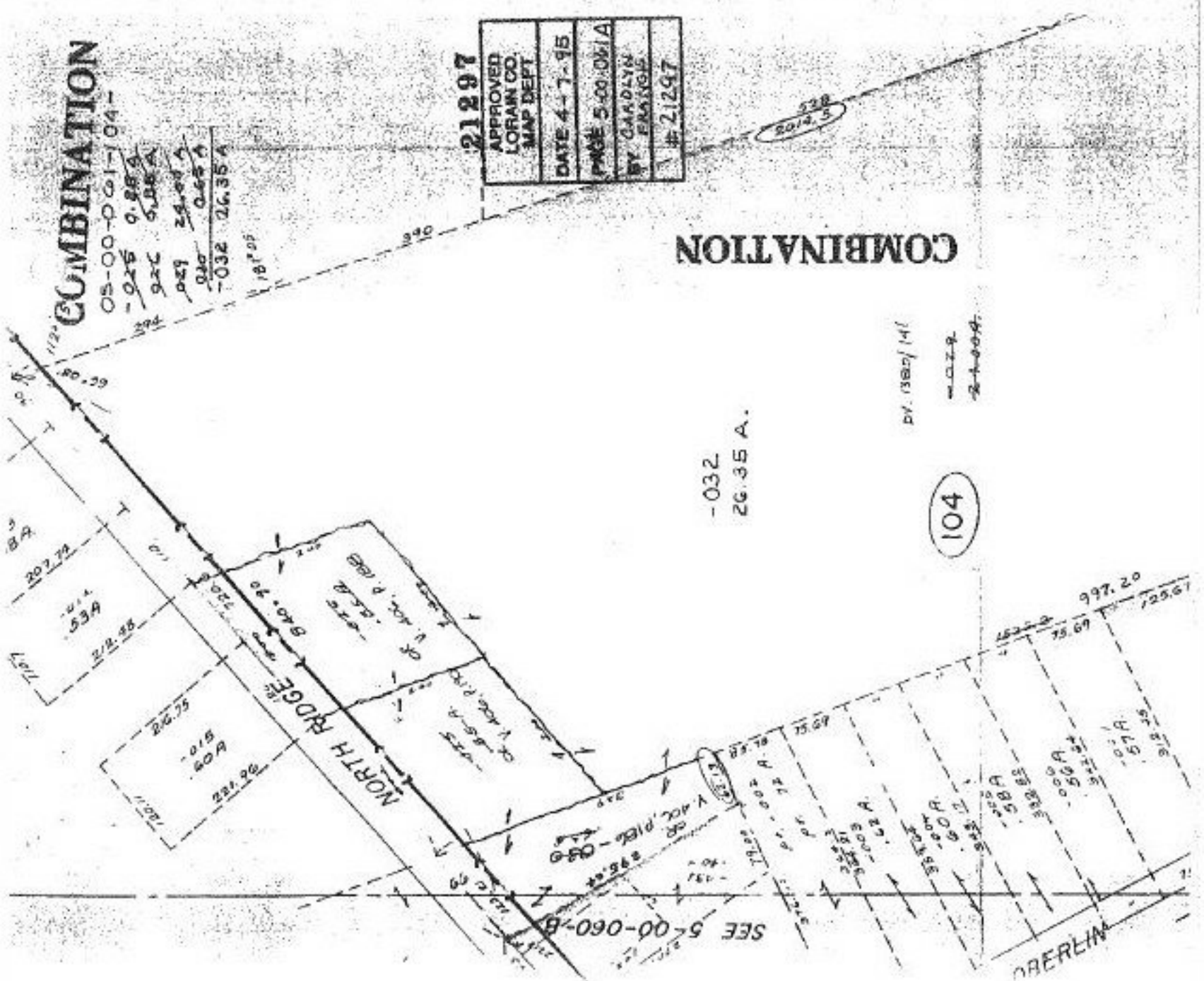
**COMBINATION**

-032  
26.35 A.

BY 1380/141

WATER  
STEEL

104



SEE 5-00-060-B