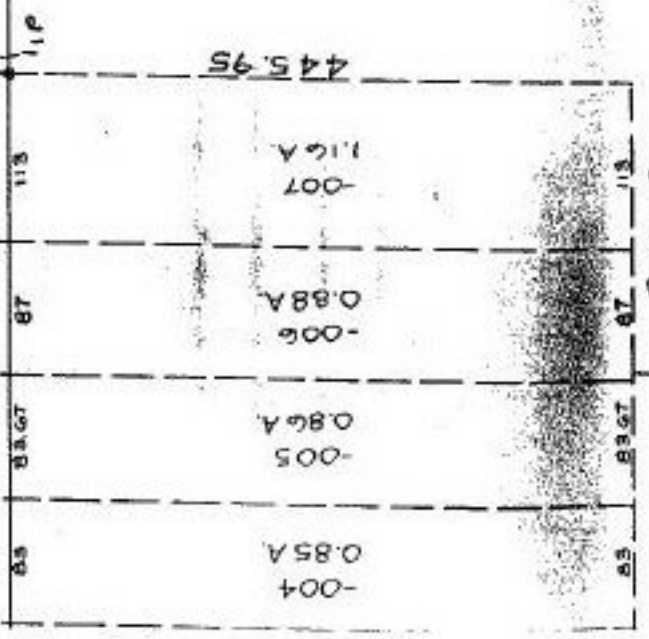


CUYAHOGA CO.

SPRAGUE

RD. 9

696.39



032

Pt. 1013

Pt. 4120A
~~26990~~

29.29A

PRIOR INST.

DV. 1017/520

AC CORR PER SURVEY BY
GEORGE HOFMANN REG SURVEYOR

1:1NF.

12-00-060-000-032

**ACREAGE
CORRECTION**

21295-A
APPROVED LORAIN CO. MAP DEPT
DATE 4-28-95
PAGE 12-00-060A
BY CAROLYN FRANCIS
#21295