

PT. 14.10 A.

527.6

-156
1.82 A.

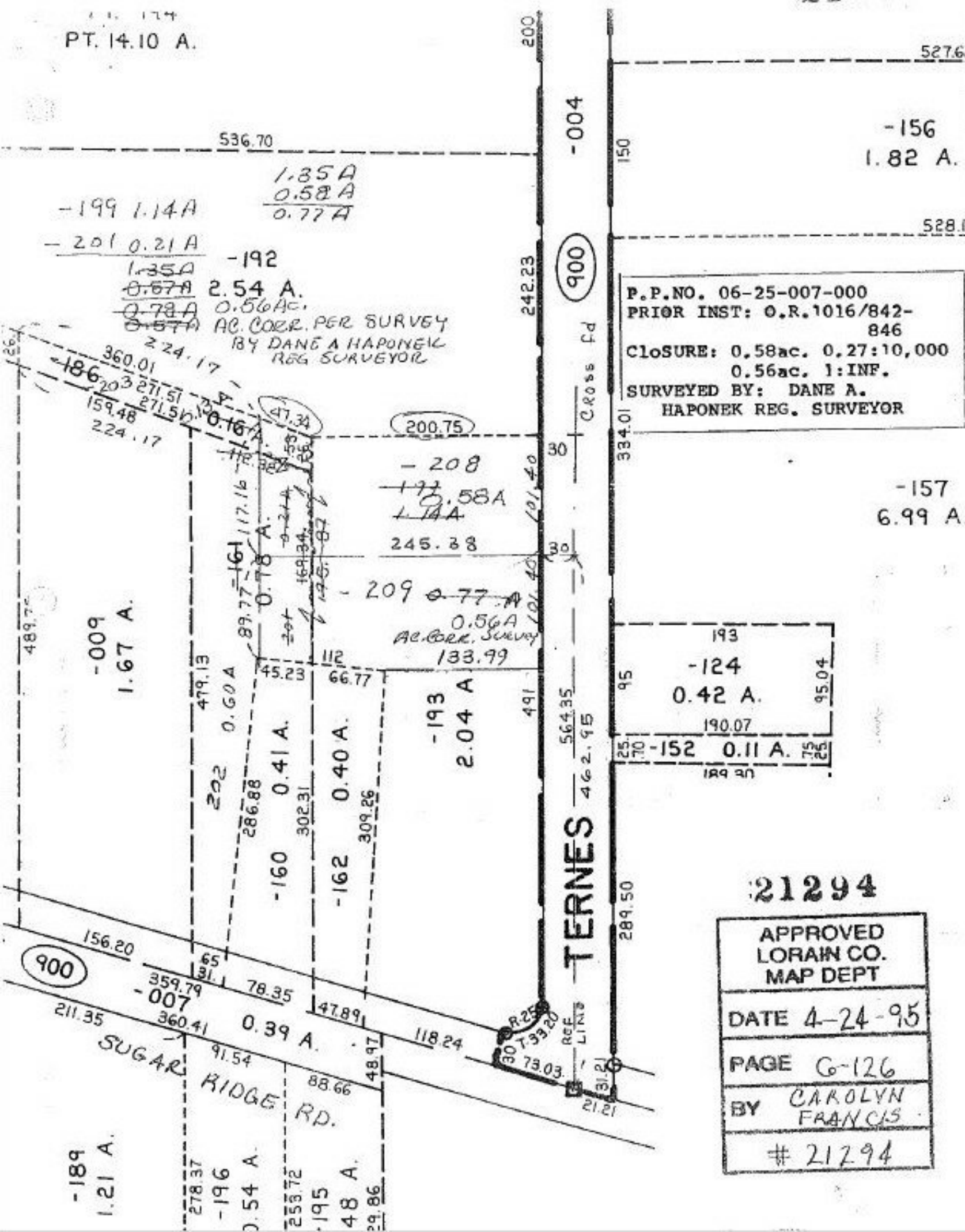
528.1

P.P.NO. 06-25-007-000
 PRIOR INST: O.R.1016/842-846
 CLOSURE: 0.58ac. 0.27:10,000
 0.56ac. 1:INF.
 SURVEYED BY: DANE A. HAPONEK REG. SURVEYOR

-157
6.99 A.

193
 -124
 0.42 A.
 190.07
 -152 0.11 A.
 189.30

APPROVED
 LORAIN CO.
 MAP DEPT
 DATE 4-24-95
 PAGE G-126
 BY CAROLYN FRANCIS
 # 21294



-004

900

Cross Rd

564.35

462.95

TERNES

REF LINE

30 T-33-20

73.03

31.21

21.21

200

536.70

242.23

30

30

112

491

491

289.50

47.89

118.24

48.97

88.66

29.86

489.75

900

156.20

211.35

278.37

253.72

-009

1.67 A.

202

286.88

65

31

78.35

91.54

219.54

1.35A

0.57A

0.78A

0.57A

224.17

360.01

203

271.51

159.48

271.50

224.17

479.13

0.60A

286.88

302.31

309.26

-192

2.54 A.

0.56Ac.

AC. CORR. PER SURVEY

BY DANE A HAPONEK

REG SURVEYOR

0.16A

89.77

161

117.16

0.78 A.

45.23

66.77

112

47.89

48.97

-199

1.14A

1.35A

0.58A

0.77A

224.17

360.01

203

271.51

159.48

271.50

224.17

479.13

0.60A

286.88

302.31

-201

0.21 A

1.35A

0.57A

0.78A

0.57A

224.17

360.01

203

271.51

159.48

271.50

224.17

479.13

0.60A

286.88

1.35A

0.58A

0.77A

224.17

360.01

203

271.51

159.48

271.50

224.17

479.13

0.60A

286.88

302.31

309.26

47.34

53

53

53

53

53

53

53

53

53

53

53

53

-208

0.58A

1.14A

245.38

101.40

101.40

101.40

101.40

101.40

101.40

101.40

101.40

101.40

-209

0.77 A

0.56A

AC. CORR. SURVEY

133.99

101.40

101.40

101.40

101.40

101.40

101.40

101.40

101.40

-193

2.04 A

491

491

491

491

491

491

491

200.75

101.40

101.40

101.40

101.40

101.40

101.40

101.40

101.40

101.40

101.40

101.40

101.40

101.40

101.40

101.40

101.40

101.40

101.40

101.40

101.40

101.40

101.40

101.40

101.40

101.40

101.40

101.40

101.40

101.40

101.40

101.40

101.40

101.40

101.40

101.40

101.40

101.40

101.40

101.40

101.40

101.40

101.40

101.40

101.40

101.40

101.40

101.40

101.40

101.40

101.40

101.40

101.40

101.40

101.40

101.40

101.40

101.40

101.40

101.40

101.40

101.40

101.40

101.40

101.40

101.40

101.40

101.40

101.40

101.40

101.40

101.40

101.40

101.40

101.40

101.40

101.40

101.40

101.40

101.40

101.40

101.40

101.40

101.40

101.40

101.40

101.40

101.40

101.40

101.40

101.40

101.40

101.40

101.40

101.40

101.40

101.40

101.40

101.40

101.40

101.40

101.40

101.40

101.40

101.40

101.40

101.40

101.40

101.40

101.40

101.40

101.40

101.40

101.40

101.40

101.40

101.40

101.40

101.40

101.40

101.40

101.40

101.40

101.40