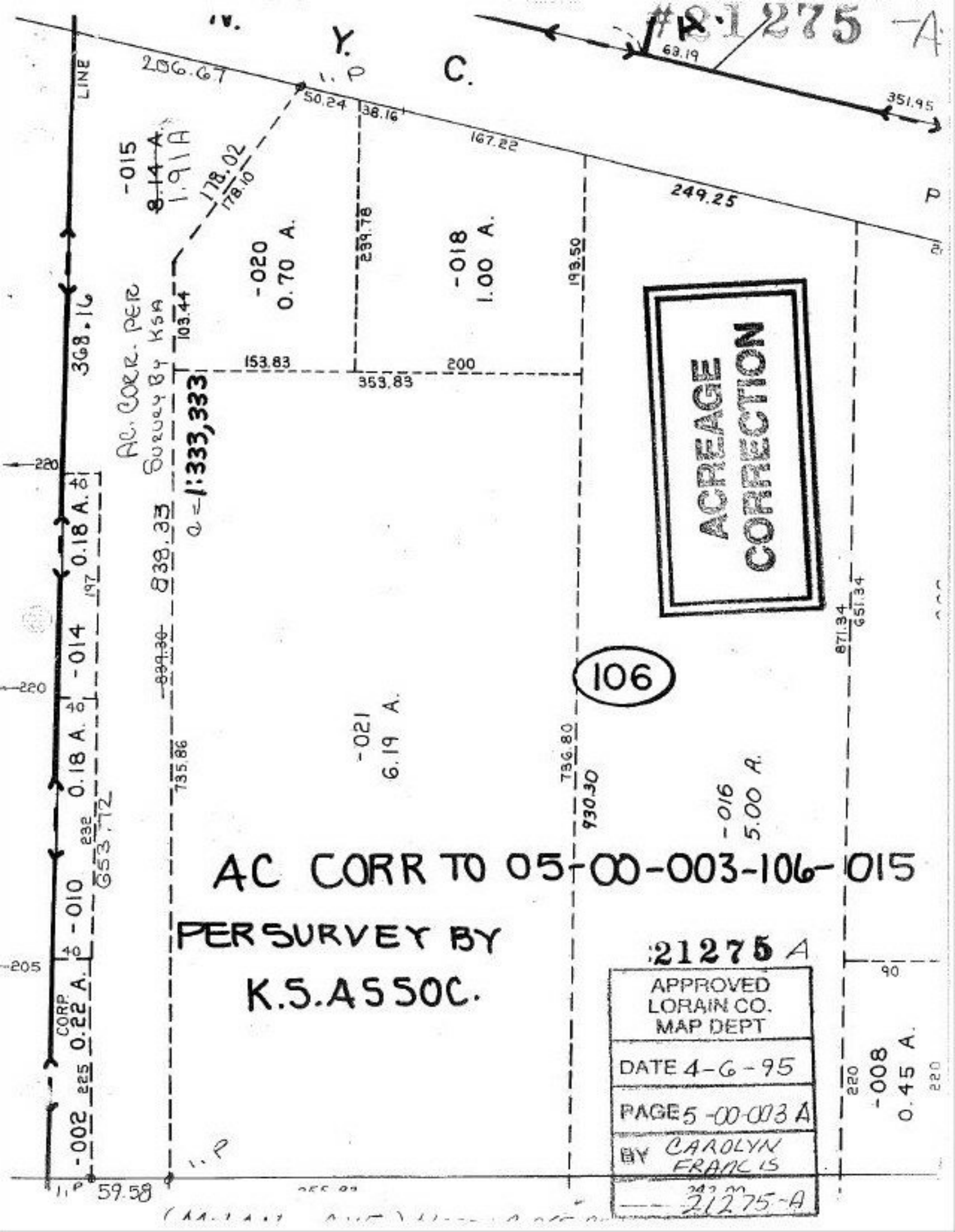


#21275-A



AC. CORR. PER  
 Survey by KSA  
 Q = 1:333,333

**ACREAGE  
 CORRECTION**

106

AC CORR TO 05-00-003-106-015

PER SURVEY BY  
 K.S.A.S.S.O.C.

21275 A  
 APPROVED  
 LORAIN CO.  
 MAP DEPT  
 DATE 4-6-95  
 PAGE 5-00-003 A  
 BY CAROLYN  
 FRANKS  
 21275-A

-008  
 0.45 A.