

CARLISLE
ELYRIA

ANNEXATION -

FILE

RESOLUTION NO.
95-843
PASSED 11/10/94

-190
11.32

ORD. 79-266 (10-15-79)
ELYRIA CITY
276.02
CARLISLE TWP.

EFFECTIVE ACS
7-15-97

101

#21274-X

APPROVED LORAIN CO. MAP DEPT.
DATE 3-13-96
PAGE 10-00-005-B
BY T. McNamee
21274-X

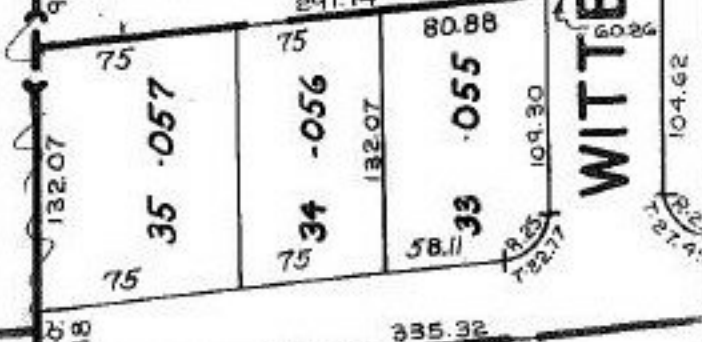
-062
375 A.

6/22/95
577.78 PASSED
TWP. CITY
-019
1.00 A.

289.87
-063
0.56 A.

Res. 94-843
595.42
625.56

TWP. CITY
96.87



WITTENBERG AVE.

CHESTNUT RIDGE

SEE 10-00-005