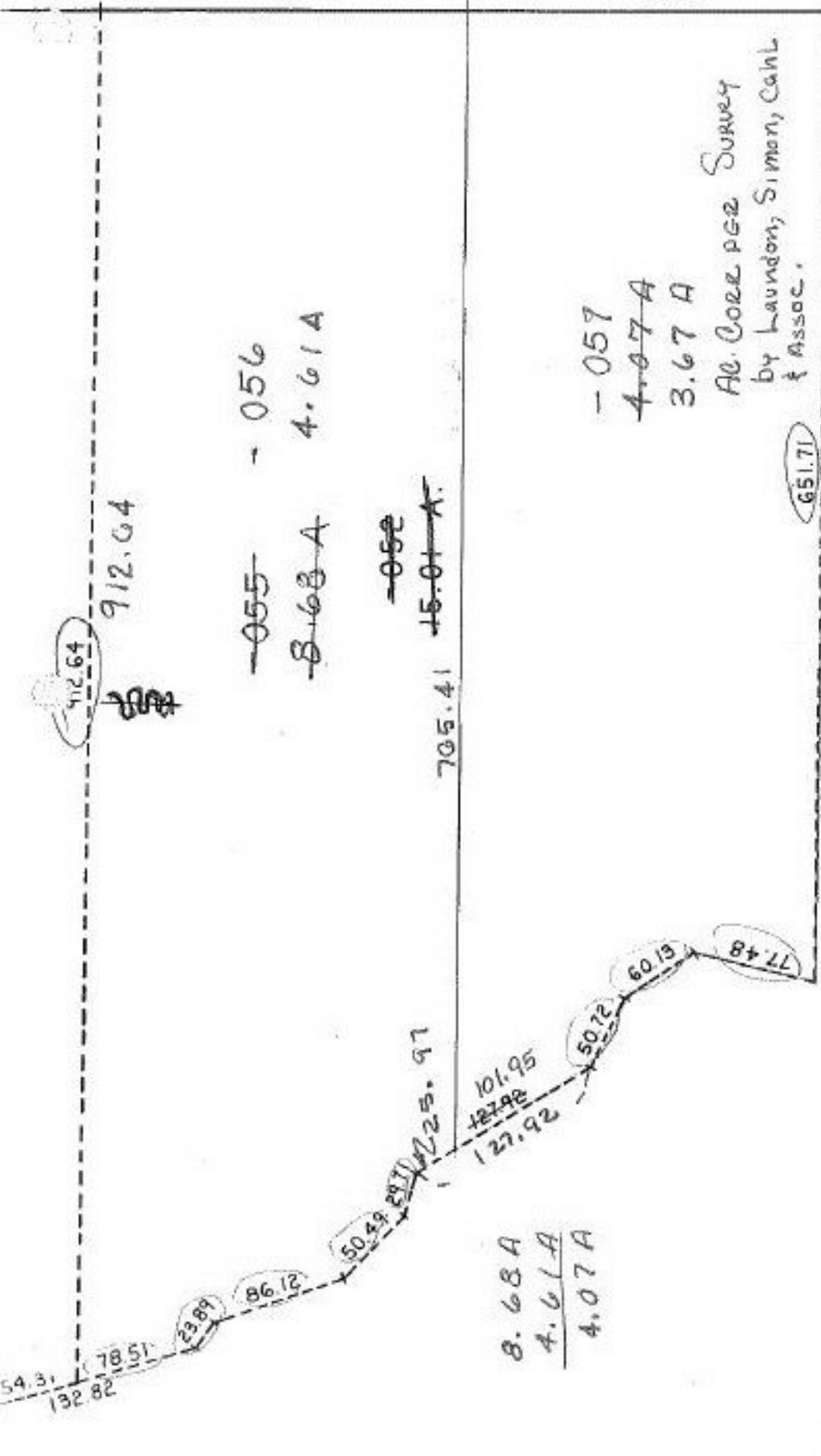


503.0
FROM
+
WOODSTEL
N. 62.0 L.S.

WOODSTEL - AUDN LAKE RD

467.21 233.60 446.50 233.60 733.61



3A.00
REFERENCE:
N.E. Corner
Computer, Jan 2, 1995
DU 1155/ea.4

P.P. NO. 11-00-057-000
PRIOR INST: ~~OK 11-00-057-000~~ 0.02:10.000 3.67 ac.
CLOSURE: 0.18:10.000 4.61 ac.
SURVEYED BY: LAUNDON, SIMON, CAHL & ASSOC.

SA 5-25-95

21273

APPROVED LOPAIN CO. MAP DEPT
DATE 3-21-95
PAGE 11-00-057
BY CAROLYN FRANCIS
21273

3 A.