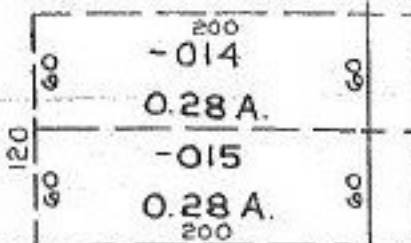
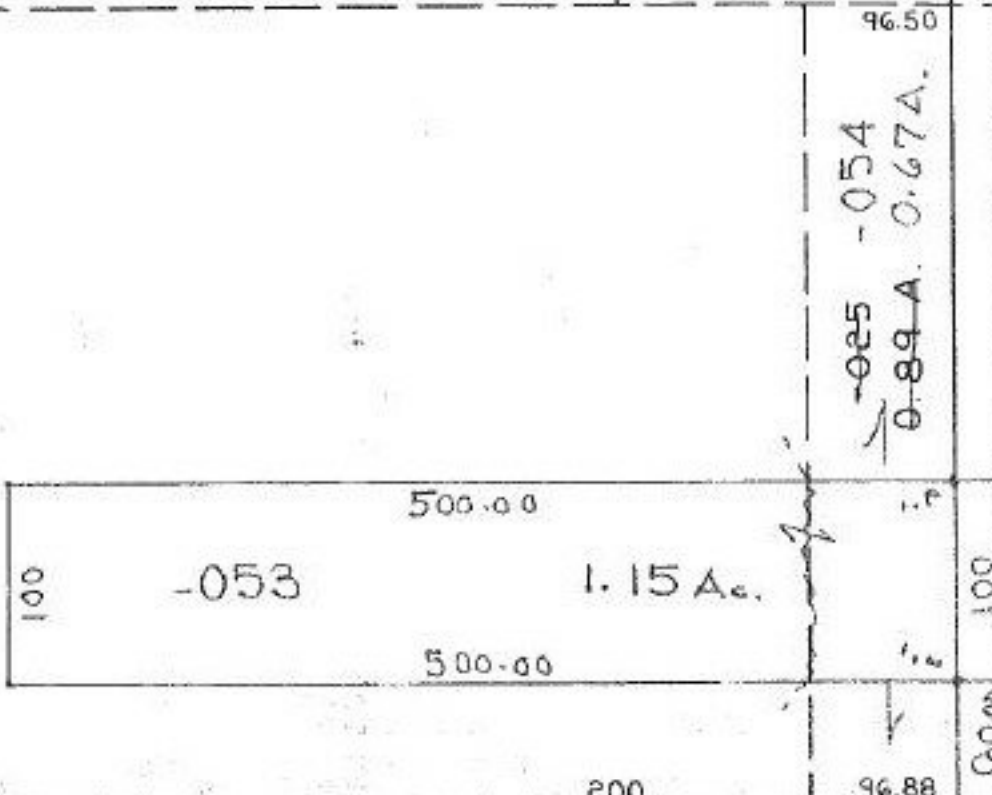


21263

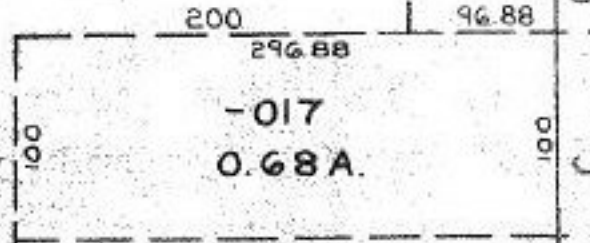


0.89 A  
 0.22 A  
 0.67 A

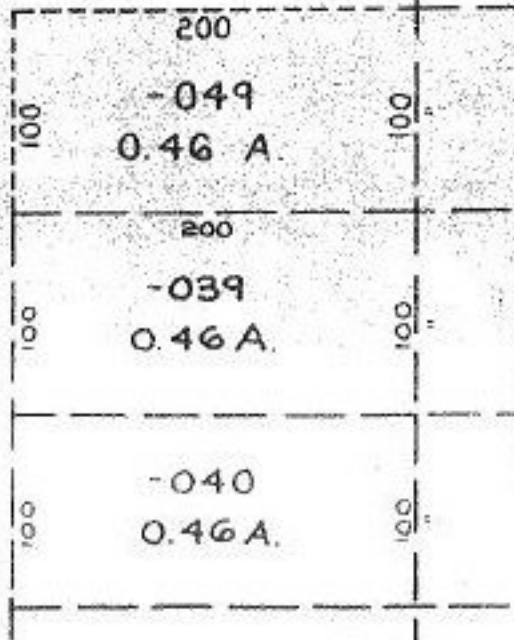
30.77 A  
 0.93 A  
 29.84 A



~~-055~~  
~~-050~~  
 30.77 A.  
 29.84 A.



P.P.NO. 09-00-004-101  
 PRIOR INST: O.R.31/926  
 CLOSURE: 1:INF.  
 SURVEYED BY:  
 CARL R. ANDERSON  
 REG. SURVEYOR TRI NOVA  
 ENG. CO.



21263  
 APPROVED  
 LORAIN CO.  
 MAP DEPT  
 DATE 4-5-95  
 PAGE 900-004 A  
 BY CAROLYN  
 FRANCIS  
 #21263

BEGINNING AT A I.P. PD. IN S. LINE OF  
 O.L. 4 THEN SW. 100. ft. to centerline  
 ANNIS RD. THE USE OF

ANNIS RD.

460.00

124.59 I.P.