

TO INTERSECTION OF CENTRAL RD OF NEFF AND ERHART RD (7)

NEFF

21241

2.50 A

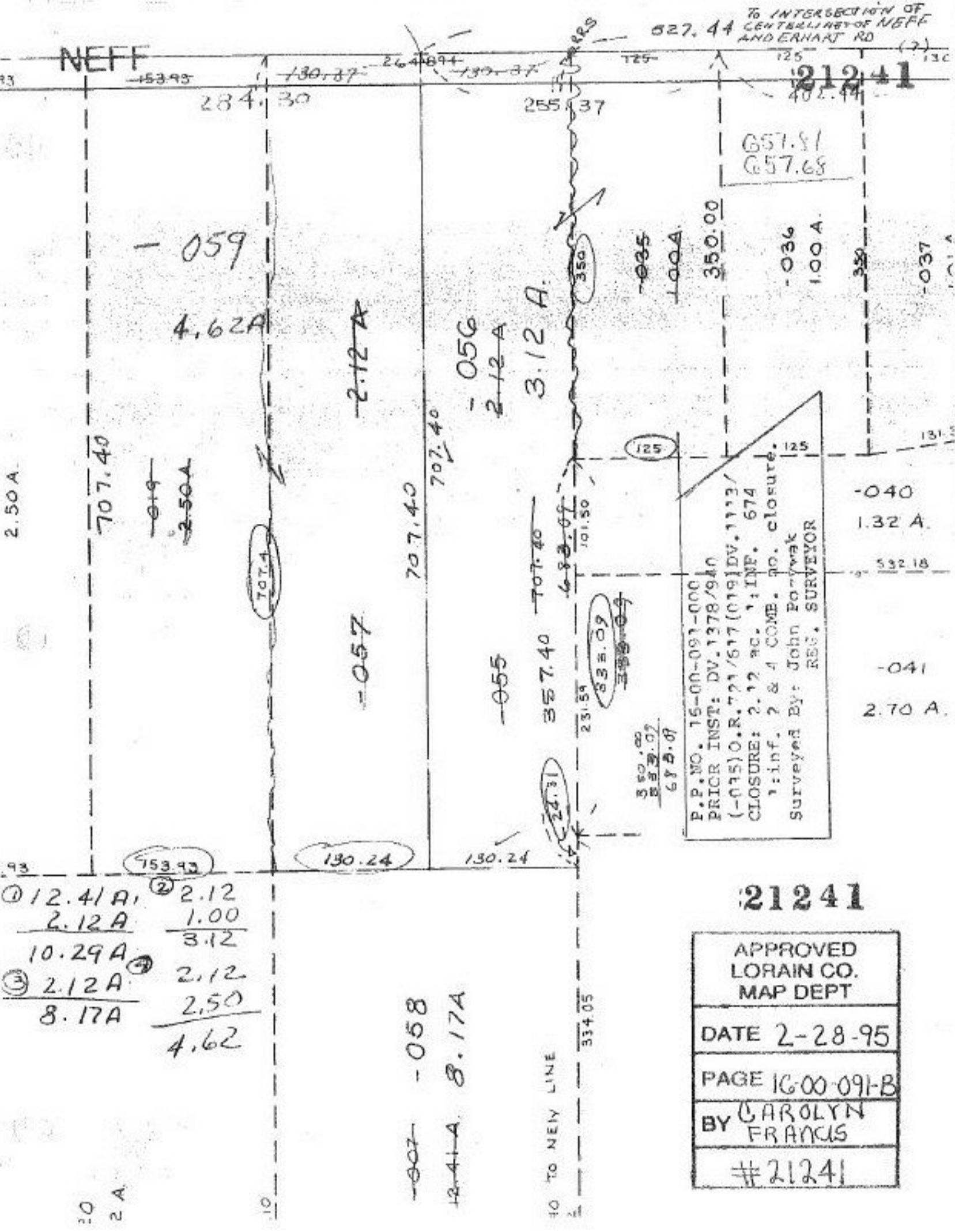
93

2.0
2 A

① 12.41 A	② 2.12
2.12 A	1.00
10.29 A	3.12
③ 2.12 A	2.12
8.17 A	2.50
	<u>4.62</u>

10 TO NEW LINE

334.05



P.P. NO. 16-00-091-000
 PRIOR INST: DV. 1378/940
 (-075) O.R. 721/617 (019) DV. 1113 /
 CLOSURE: 2.12 ac. 1 INF. 674
 1: inf. 2 & 4 COMB. no. closure.
 Surveyed By: John Potywak
 REG. SURVEYOR

APPROVED
 LORAIN CO.
 MAP DEPT

DATE 2-28-95

PAGE 16-00-091-B

BY CAROLYN
 FRANCIS

#21241