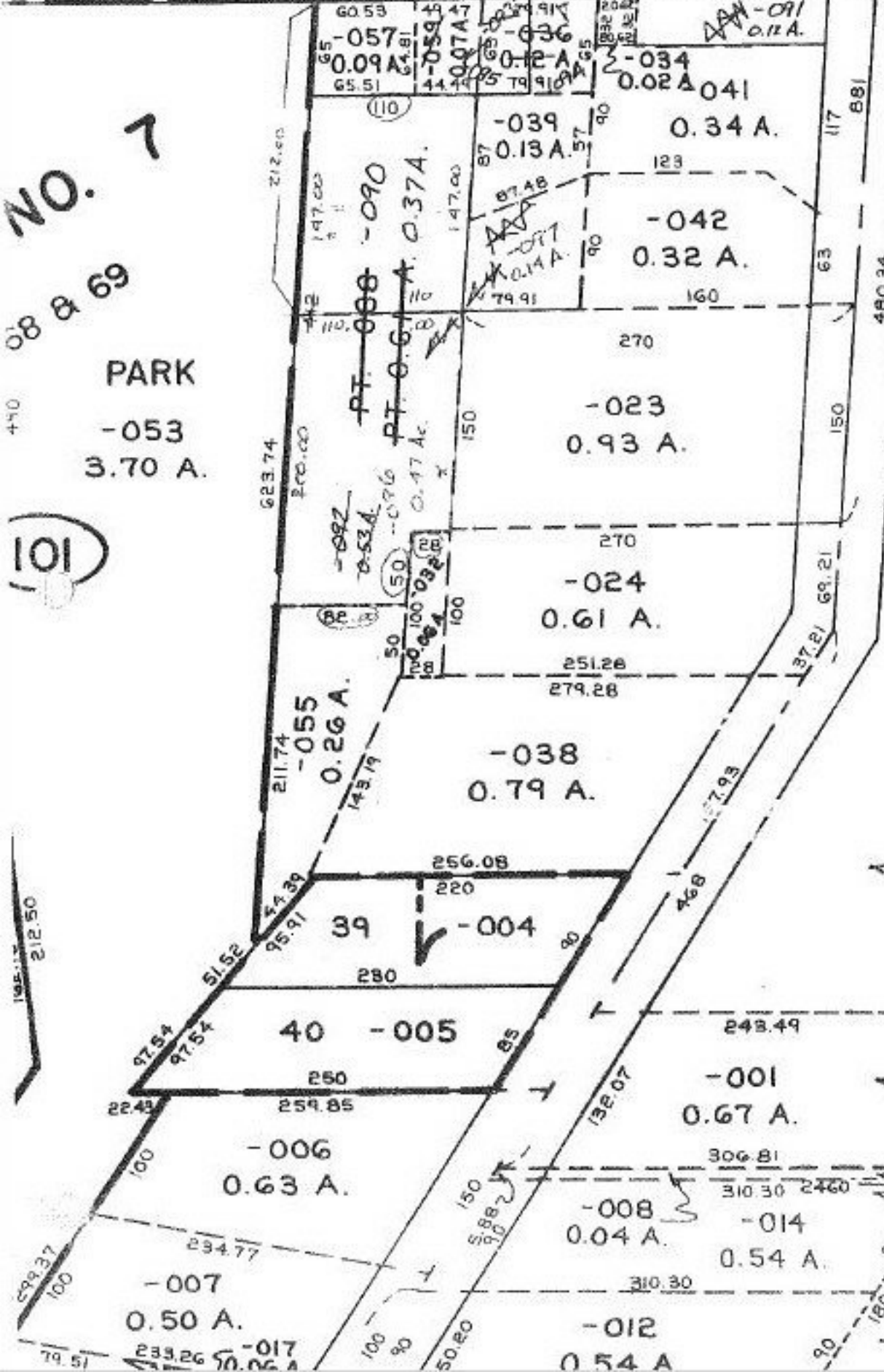


7-006
58-007
155
VALLEY - C
34-00
155
35-01
158.60
36-0
174.8
37-
192.0
38
119.77
64.38

NO. 7
08 & 69
PARK
-053
3.70 A.

101



SEE 5-00-016-A

#21235
 APPROVED
 LORAIN CO.
 MAP DEPT.
 DATE 2-28-95
 PAGE 5-00-016-B
 21235