

SEE 2-02-015-A

N. 89° 49' E.

RD.

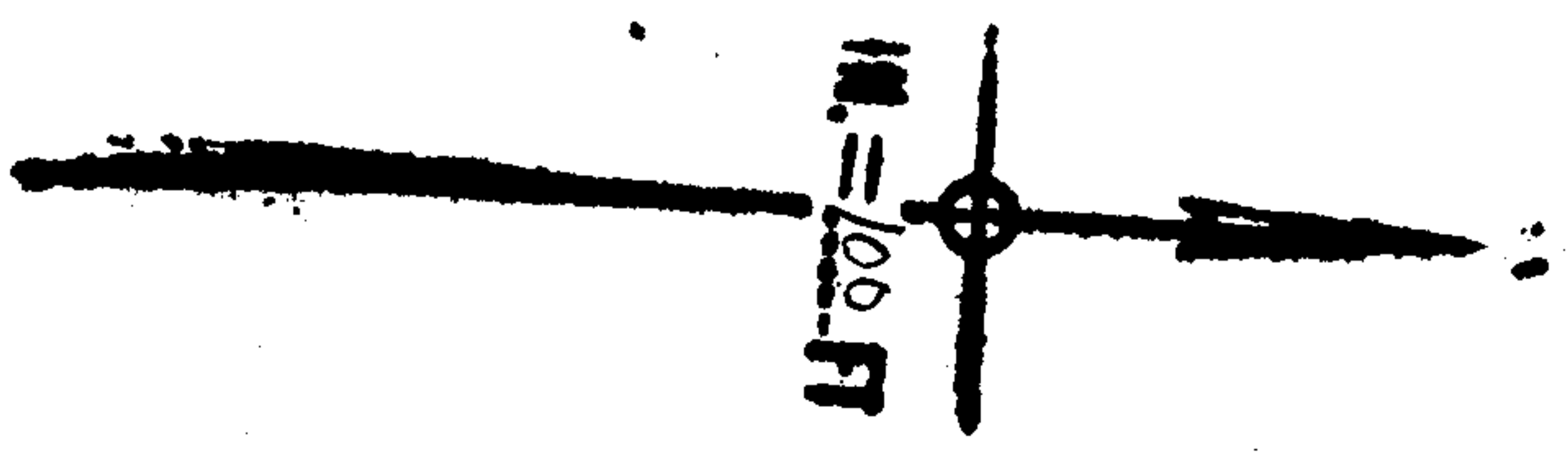
Done R.K.

7-15-86
5.5

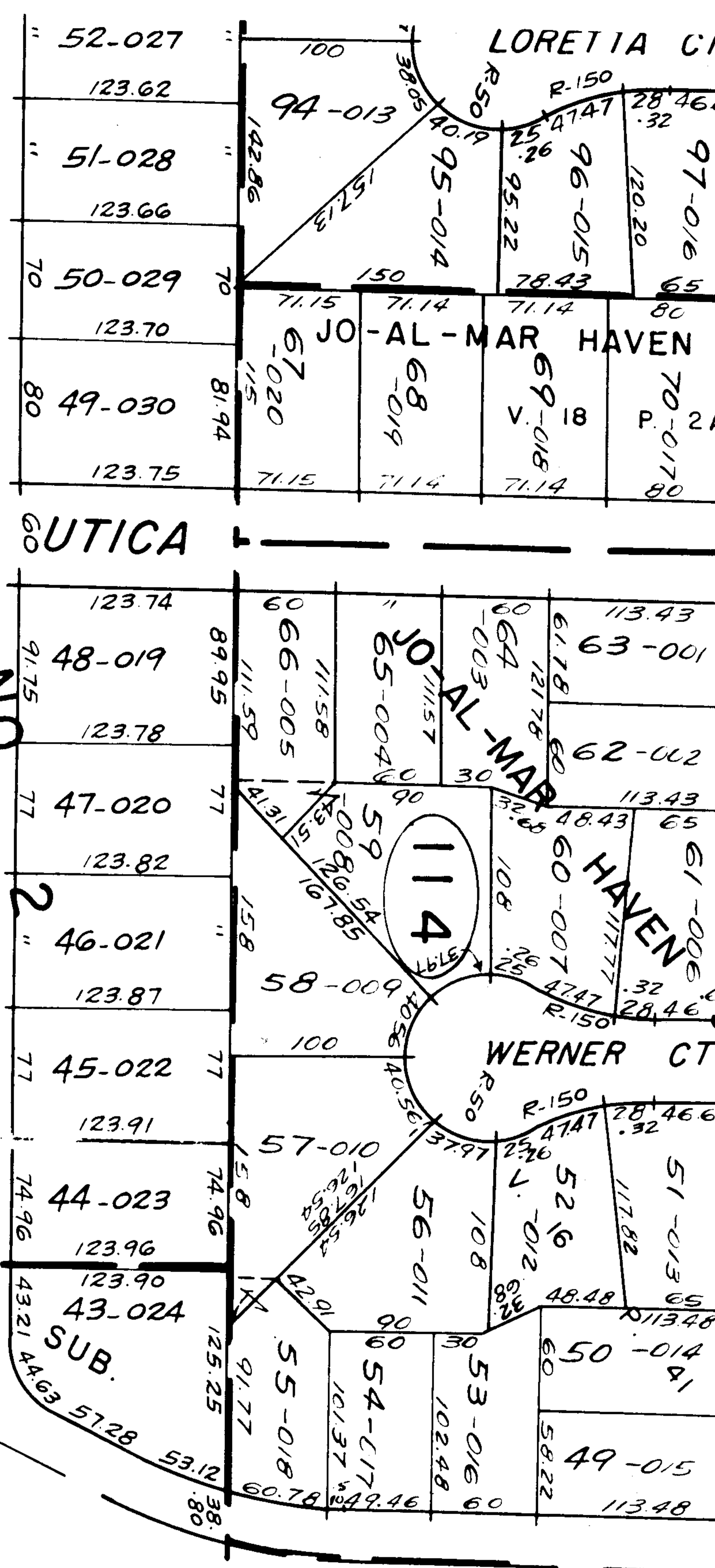
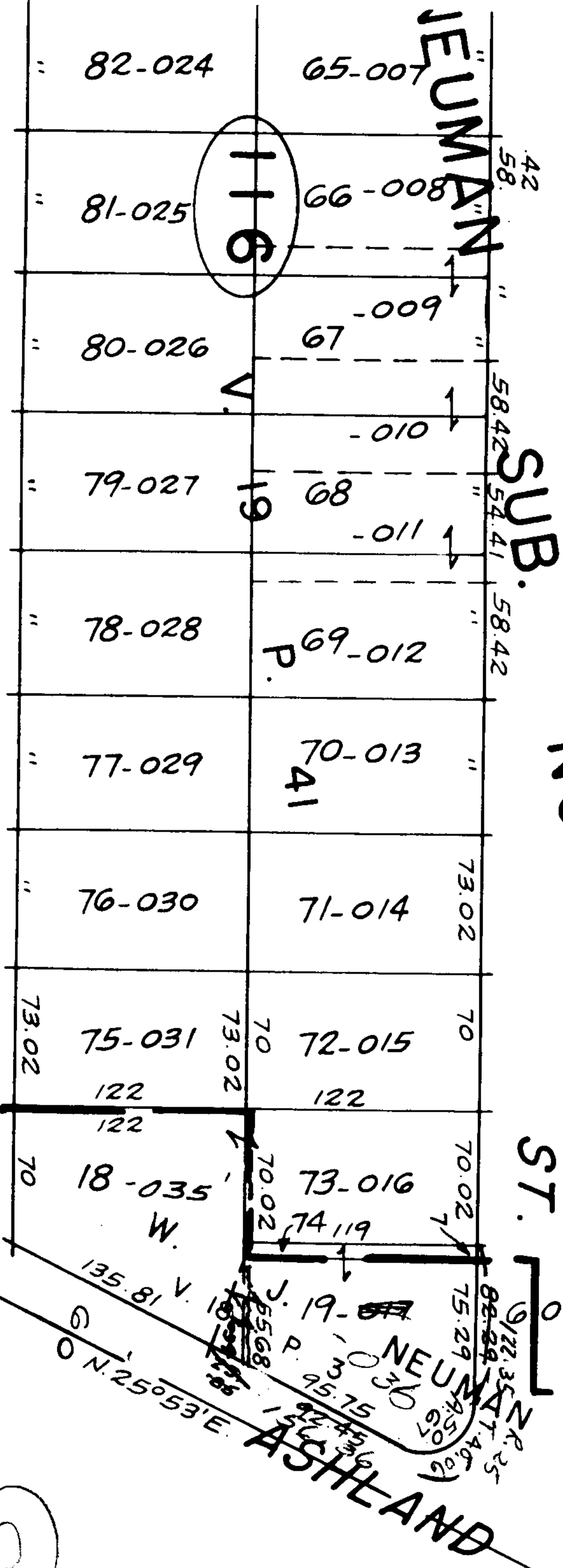
APPROVED
LORAIN CO.
MAP DEPT.
DATE 9-25-68
BY *[Signature]*

R.K.

2122



122.35
156.36



SUB.

NO.

ST.

SUB.

N. 0° 41' E.