

- 015

~~013~~

~~52-19A~~

48.58 A IN TWP. OF
AMHERST

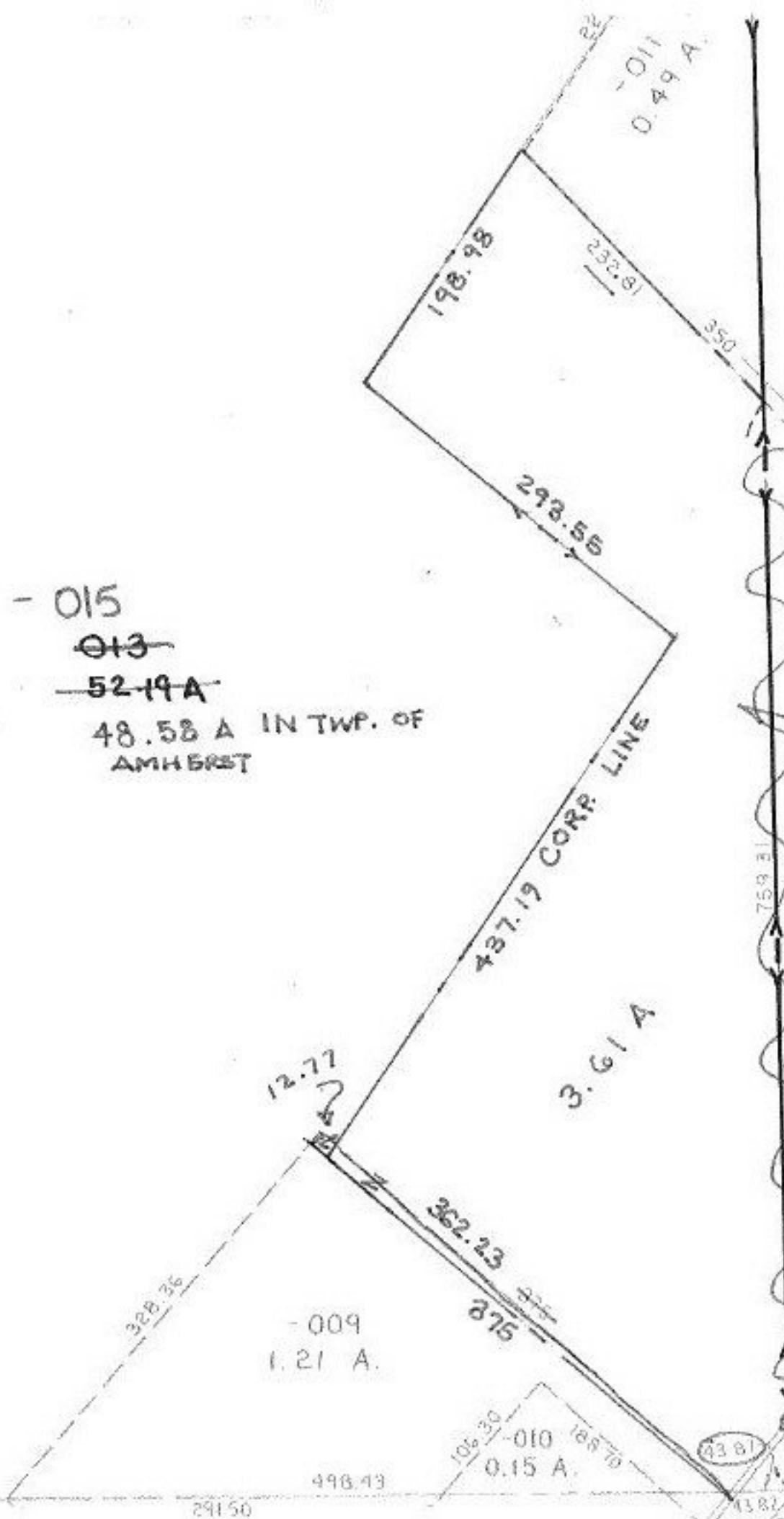
12.77

3.61 A

- 009
1.21 A.

- 010
0.15 A.

- 011
0.49 A.



ANNEX

SEE
22667-X

21218-X 2D

APPROVED LORAIN CO. MAP DEPT
DATE 10/28/98
PAGE 5-06-091-A
BY T. McVain
21218-X