

AC. CORR.

18-00-028-101-076 0-23A  
AC. CORR To: 0.24A

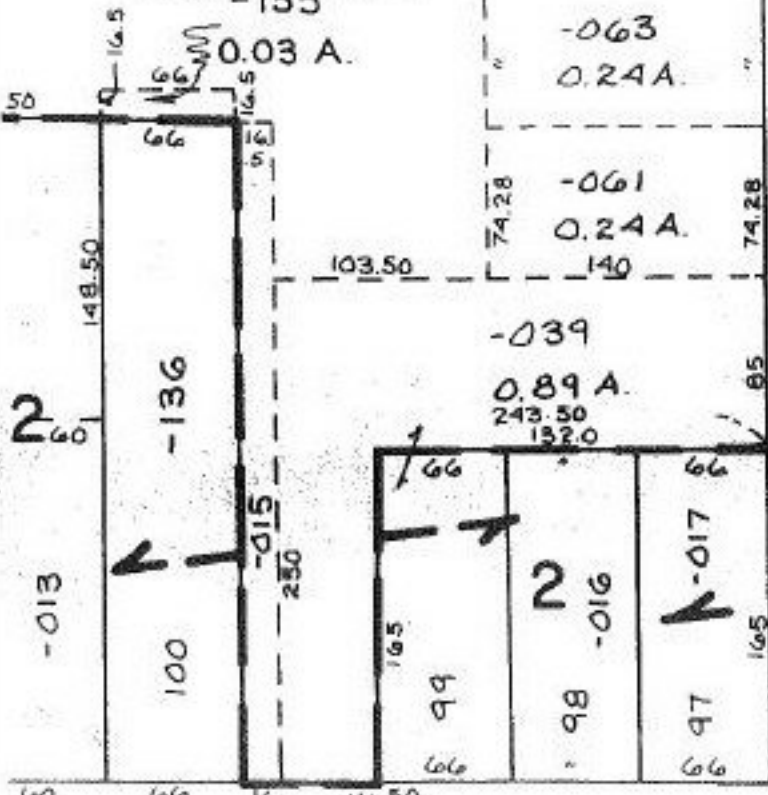
AC. CORR

DV. 982/766

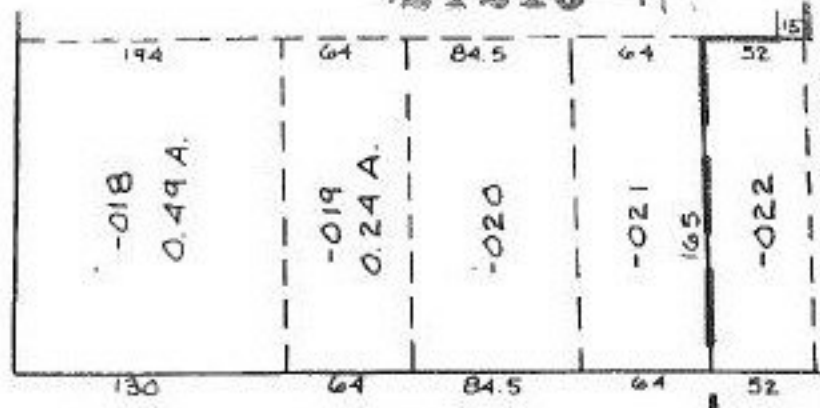
SURVEYED BY

D. D. ANDRUS  
ASSOC.

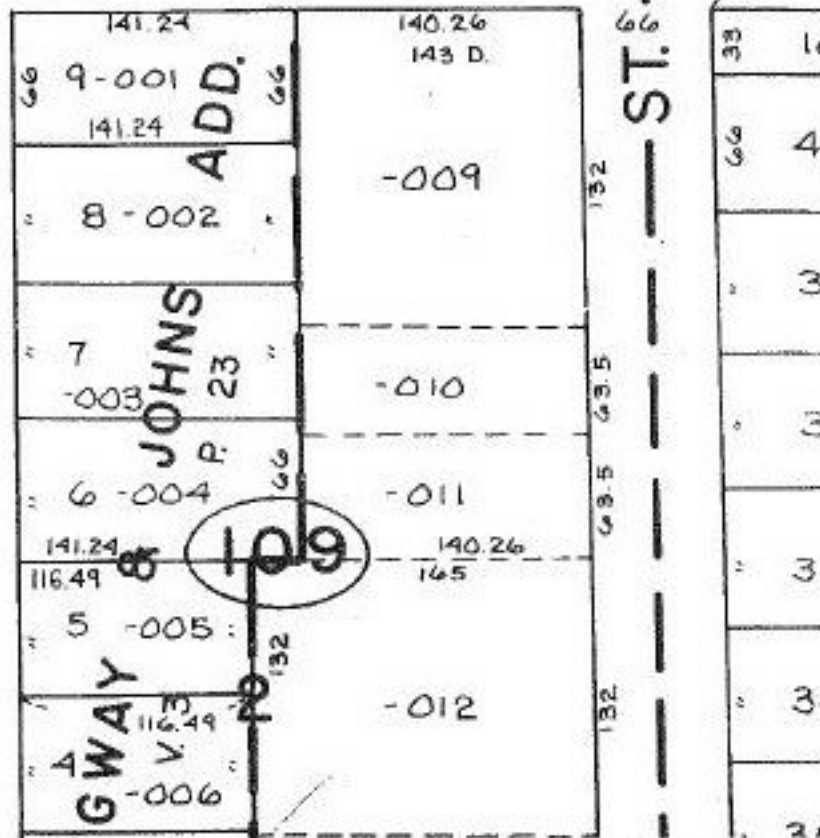
-135  
0.03 A.



HERRICK AVE.



JOHNS



HEMINGWAY

JOHNSTOWN ST.

JOHNS ADD.  
P. 23

109

18-00-028-101-076  
ACREAGE  
CORRECTION  
21216-A

APPROVED  
LORAIN CO.  
MAP DEPT

DATE 2-8-95

PAGE 18-00-028

BY CAROLYN  
FRANCIS

# 21216-A