

21213

SEE

AVON 3-00-053-A

MISSOURI AVE.

COLORADO AVE
AKA LORAIN-AVON RD

N Y C.

53

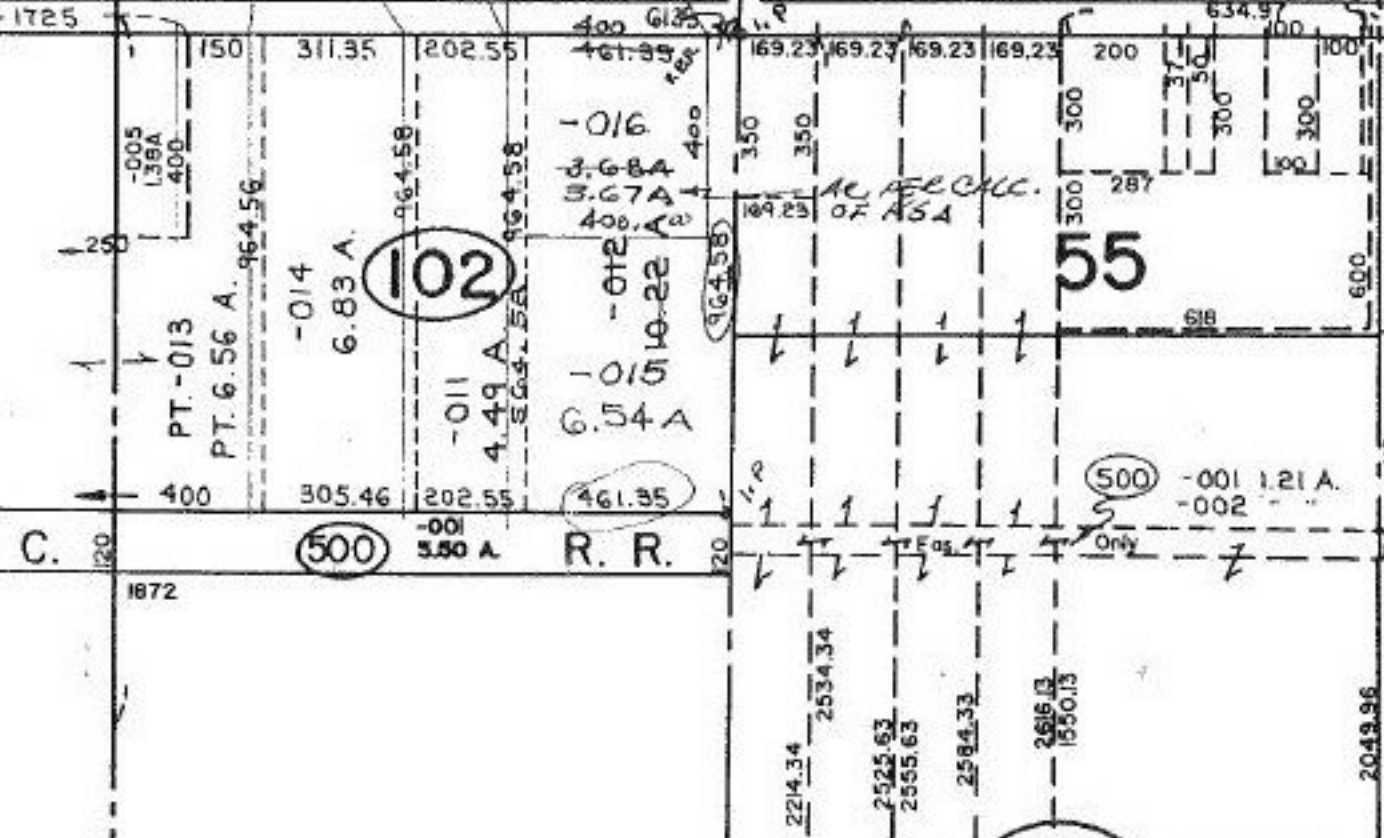
Pt. -013
Pt. 47.62 A.

08

54

102

08
38 A.



121
 P.P. No. 03-00-054-102
 PRIOR INST: O.R. 599/837
 CLOSURE: TIME
 SURVEYED BY: KSA

21213
 APPROVED
 LORAIN CO.
 MAP DEPT
 DATE 1-30-95
 PAGE 3-A
 BY CAROLYN
 FRANCIS
 # 21213