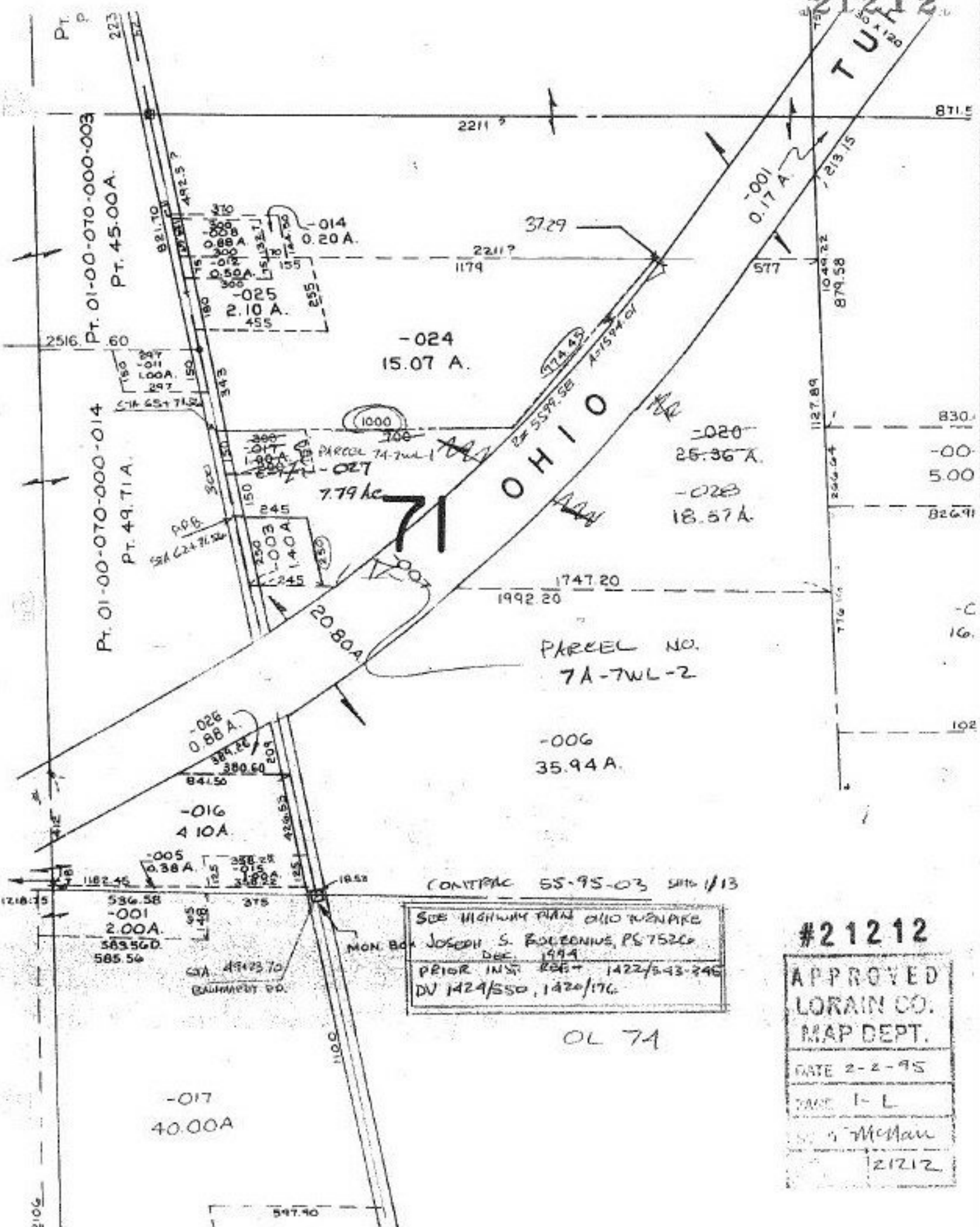


21212
TUL



PARCEL NO.
7A-TWL-2

CONTRACT 55-95-03 SHT 1/13

SEE HIGHWAY PLAN OLIO RENAISSANCE
 JOSEPH S. BOLEONIS, P.S. 7520
 DEC 1994
 PRIOR INSTR. REFS: 1422/543-245
 DV 1424/550, 1420/176

OL 7A

#21212

APPROVED
 LORAIN CO.
 MAP DEPT.
 DATE 2-2-95
 SCALE 1" = 1'
 S. J. McMan
 21212