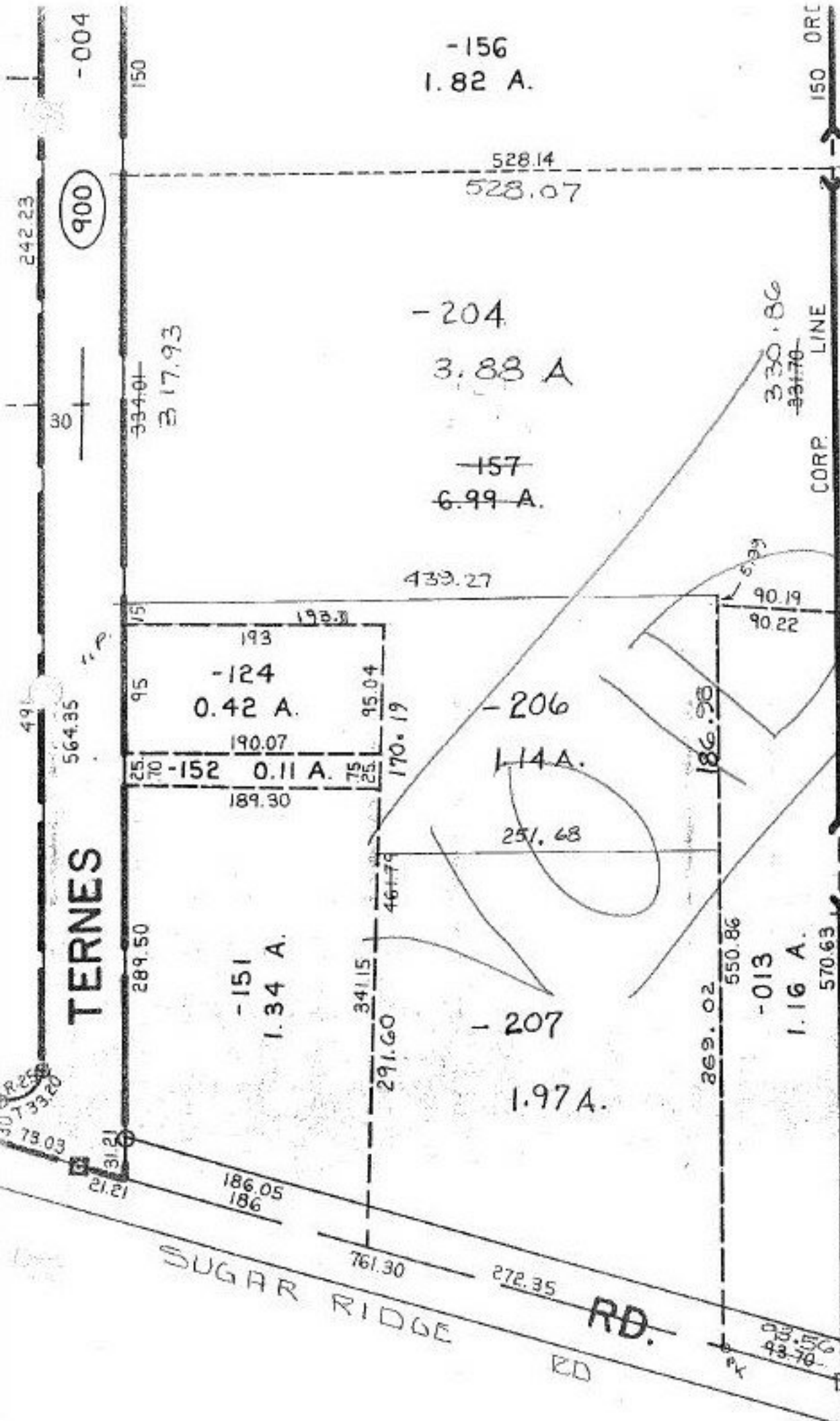


21179

S

* DEED SUBMITTED SPLITTING OUT
OF -206 w/ NUMBER
DESCRIPTION

VOID 1-12-95
PER LCTE LINDA OF



P.P. NO. 06-25-007-000
 PRIOR INST: DV. 1039/358
 CLOSURE: 1:12, 061
 SURVEYED BY: KS ASSOC.

21179 -

APPROVED LORAIN CO. MAP DEPT
DATE 1-5-95
PAGE 6-126
BY CAROLYN FRANCIS
21179

2073320
73.03
31.21
12.12

93.56
93-70

Box