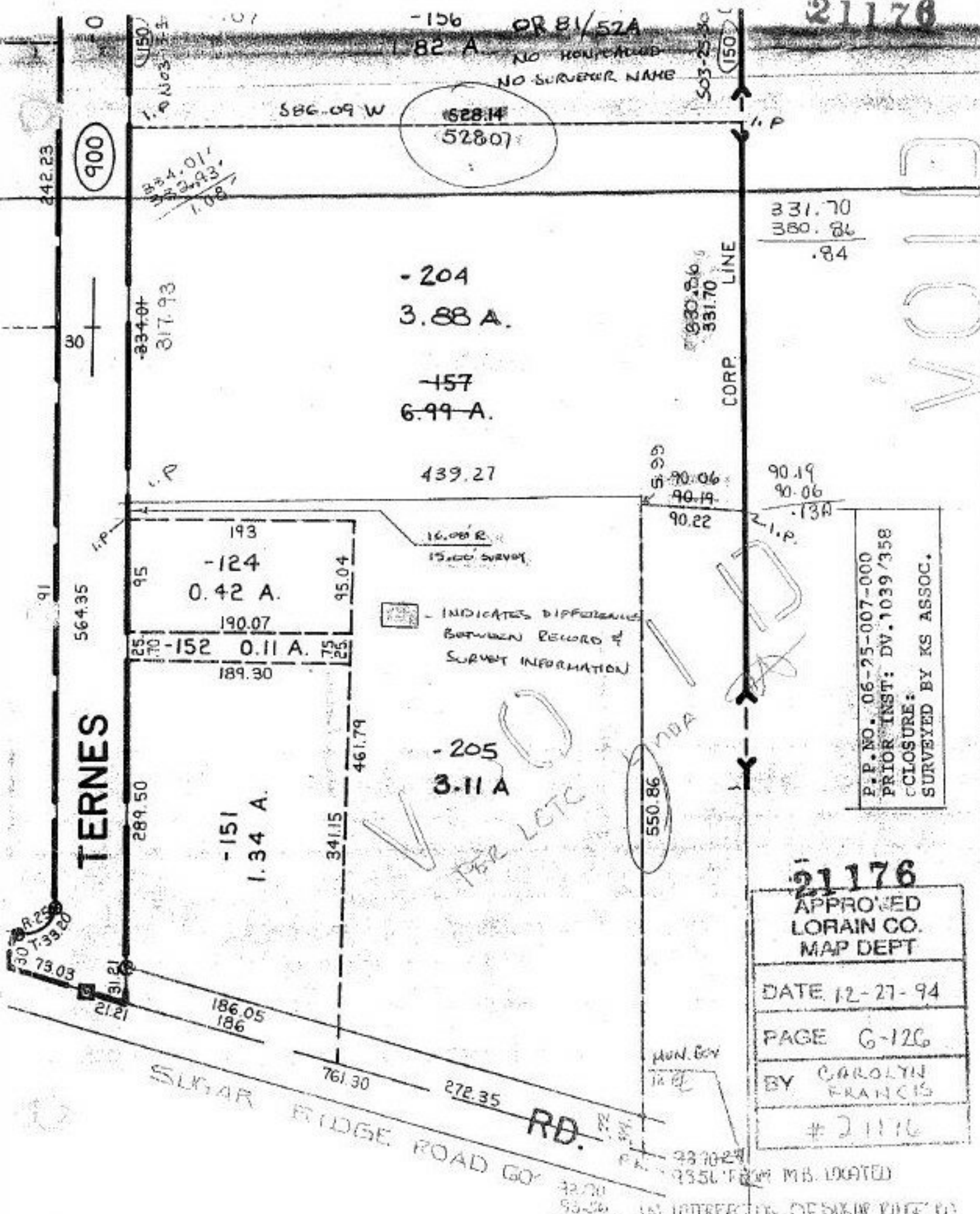


VOID  
21176



528.14  
528.07

900

-204  
3.88 A.

-157  
6.99 A.

439.27

-124  
0.42 A.

-152  
0.11 A.

-205  
3.11 A.

-151  
1.34 A.

TERNES

SUGAR RIDGE ROAD GOV RD.

CORP. LINE

INDICATES DIFFERENCES  
BETWEEN RECORD &  
SURVEY INFORMATION

P.P. NO. 06-25-007-000  
PRIOR INST: DV. 1039/358  
CLOSURE:  
SURVEYED BY KS ASSOC.

21176

APPROVED  
LORAIN CO.  
MAP DEPT

DATE 12-27-94

PAGE G-126

BY CAROLYN  
FRANCIS

# 21176

3370-24  
255L FROM MB. LOCATED  
IN INTERSECTION OF SUGAR RIDGE RD  
FROM EAST LOT LINE OF G-1-7