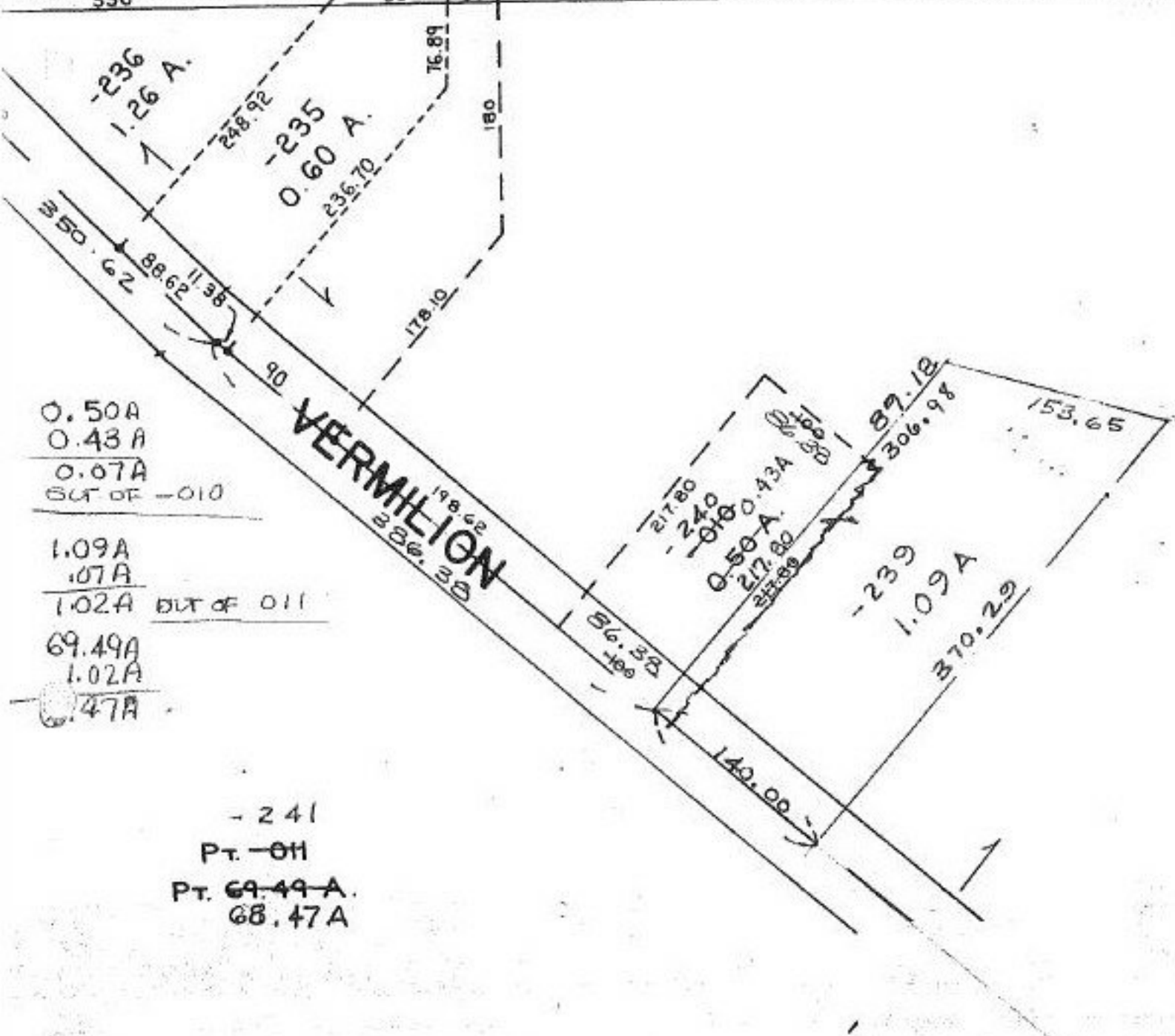


BROWNHELM STATION



0.50A
 0.43A
 0.07A
 OUT OF -010

 1.09A
 .07A
 1.02A OUT OF 011

 69.49A
 1.02A
 68.47A

- 241
 PT. -011
 PT. ~~69.49A~~
 68.47A

P.P. NO. 01-00-017-000
 PRIOR inst; 336/833
 860/630
 CLOSURE: 1.09ac. 1636.209
 SURVEYED BY: EARL H. HUNTER
 REG. SURVEYOR

21171
 APPROVED
 LORAIN CO.
 MAP DEPT

 DATE 12-23-94

 PAGE 1-00-017-B

 BY CAROLYN
 FRANCIS

 # 21171

647.40
 25.59