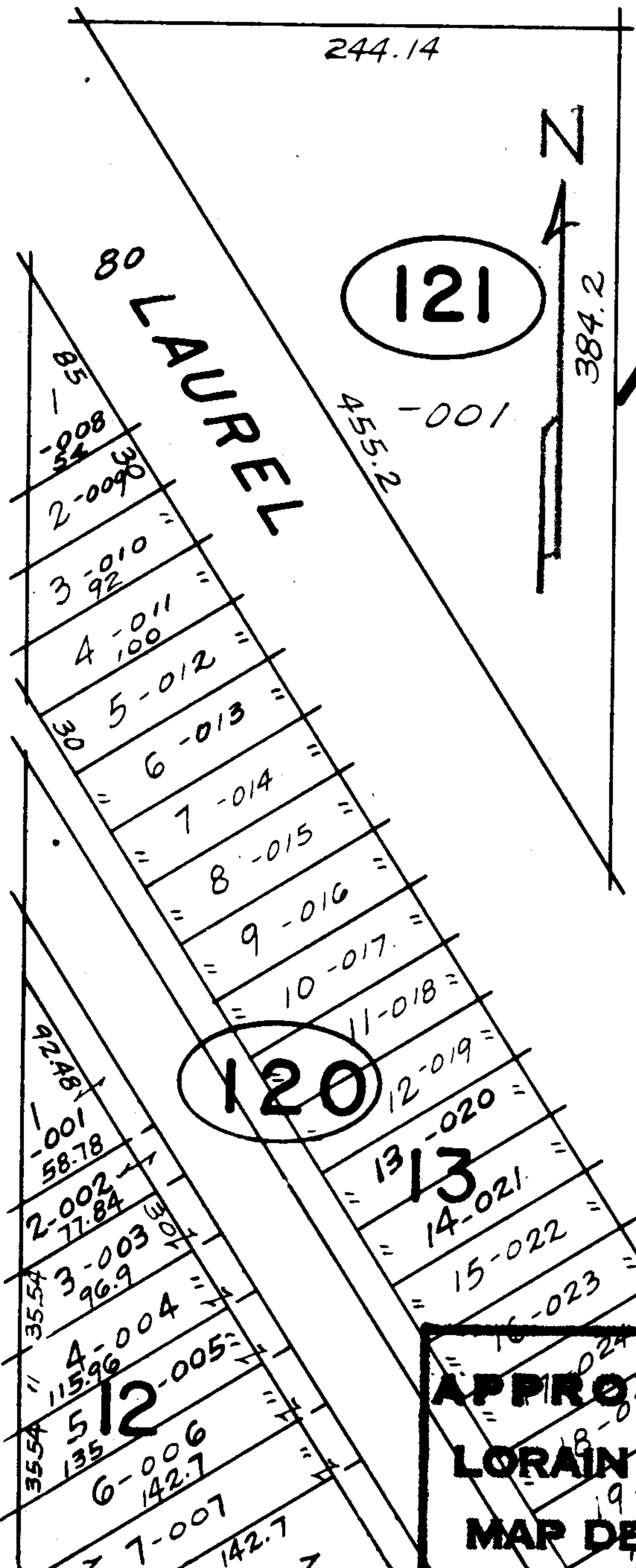


44	31-028
43	32-029
42-012	33-030
41-013	34-031
40-014	35-032
39-015	36-033
38-016 120	37-034 120

44-012	31-030
43-013	32-031
42-014	33-032
41-015	34-033
40-016	35
39-017	36-034
38-018 120	37-035 120

44-011
43-012
42-013
41-014
40-015
39-016
38-017 120

60 39th



47-001
46-002
45-003
44-004
43-005
42-006
41-007
40-008
39-009
38-010
37-011
36-012
35-013
34-014
33-015 120
32-016 119.12
31-016 100.06
30-017 81
29-018 51.94
28-019 28

1-020
2-021
3-022
4-023
5
6-024
7-025
8-026
9-027
10-028
11-029
12-030
13-031
14-032
15-033
16-034
17-035
18-036
19-037
20-038
21-039
22-040
23-041 120

77-001
76-002
75-003
74-004
73-005
72-006
71-007
70-008
69-009
68-010
67-011
66-012
65-013
64-014
63
62-014
61-015 120
58-001 120
57-002
56-003
55-004 120

60 40th

2117

Done 11-3-68
Jim Grace

APPROVED
LORAIN CO.
MAP DEPT.
DATE 9/23/68
03-00-101-B
BY R.J. Kelling

RDS & S

SEE 3-00-106-B

03-00-101-B