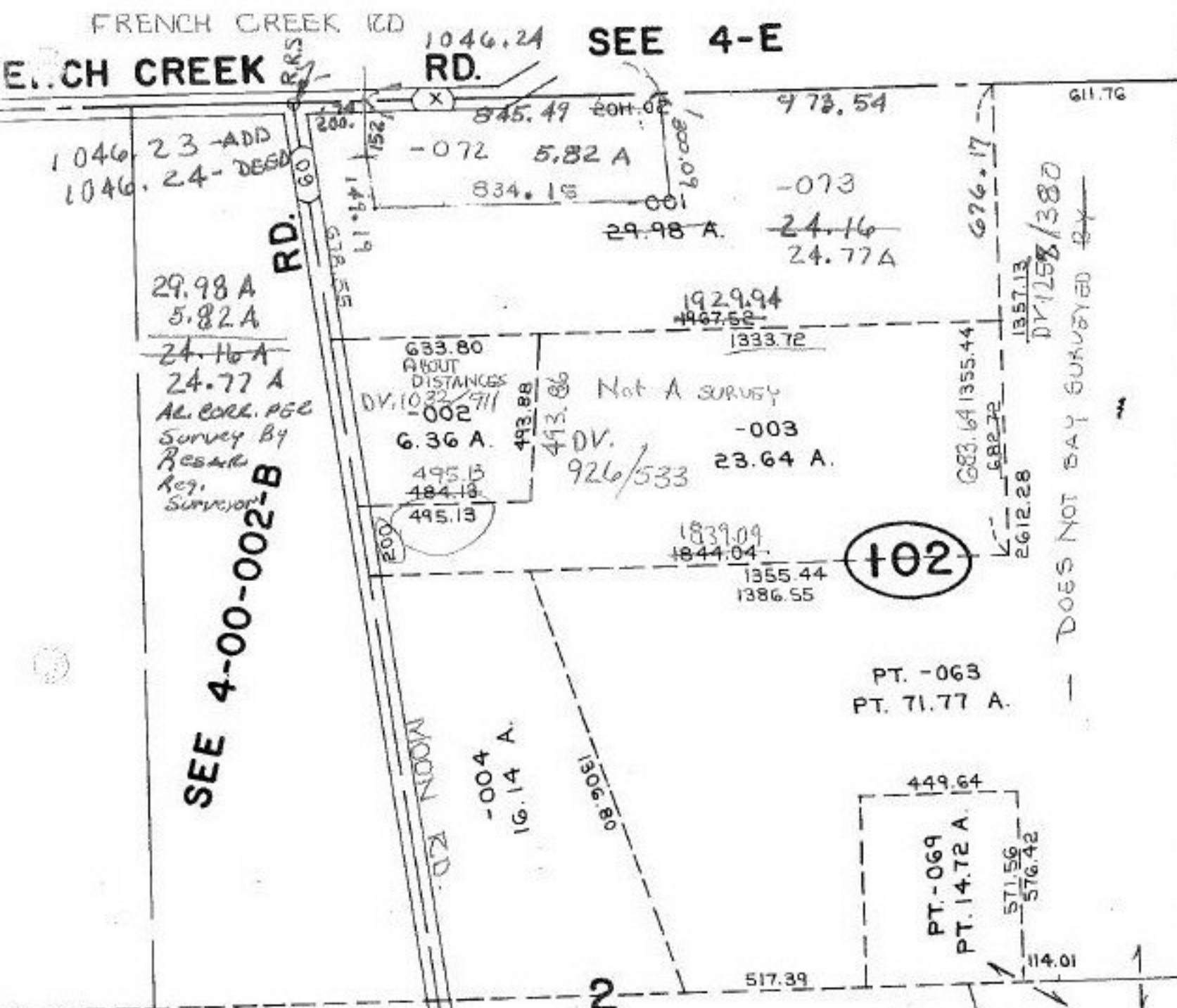


2019.77' 1907.52' 1359.81 1357.13
 2011.02' 1929.94' 676.17' (2.68' differ)
 (8.75 A) (37.58')



SEE 4-00-002-B

SEE 4-E

29.98 A
 5.82 A
 24.16 A
 24.77 A
 AL. CORR. PGE
 Survey By
 Resar
 Reg.
 Surveyor

633.80
 ABOUT
 DISTANCES
 DV. 1022/711
 -002
 6.36 A.
 493.88
 493.88
 495.13
 484.13
 495.13

Not A SURVEY
 -003
 23.64 A.
 DV.
 926/533

102

PT. -063
 PT. 71.77 A.

449.64
 PT. -069
 PT. 14.72 A.
 571.56
 576.42
 114.01

P.P. NO. 04-00-002-102-
 PRIOR INST: O.R. 644/567
 CLOSURE: 1:525,233
 SURVEYED BY: JAMES A.
 RESAR REG. SURVEYOR

21158
 APPROVED
 LORAIN CO.
 MAP DEPT
 DATE 12-8-94
 SHEET 4-I
 BY CAROLYN
 FRANCIS
 # 21156

DOES NOT SAY SURVEYED BY

SEE 4-E

002-F

00-002-B