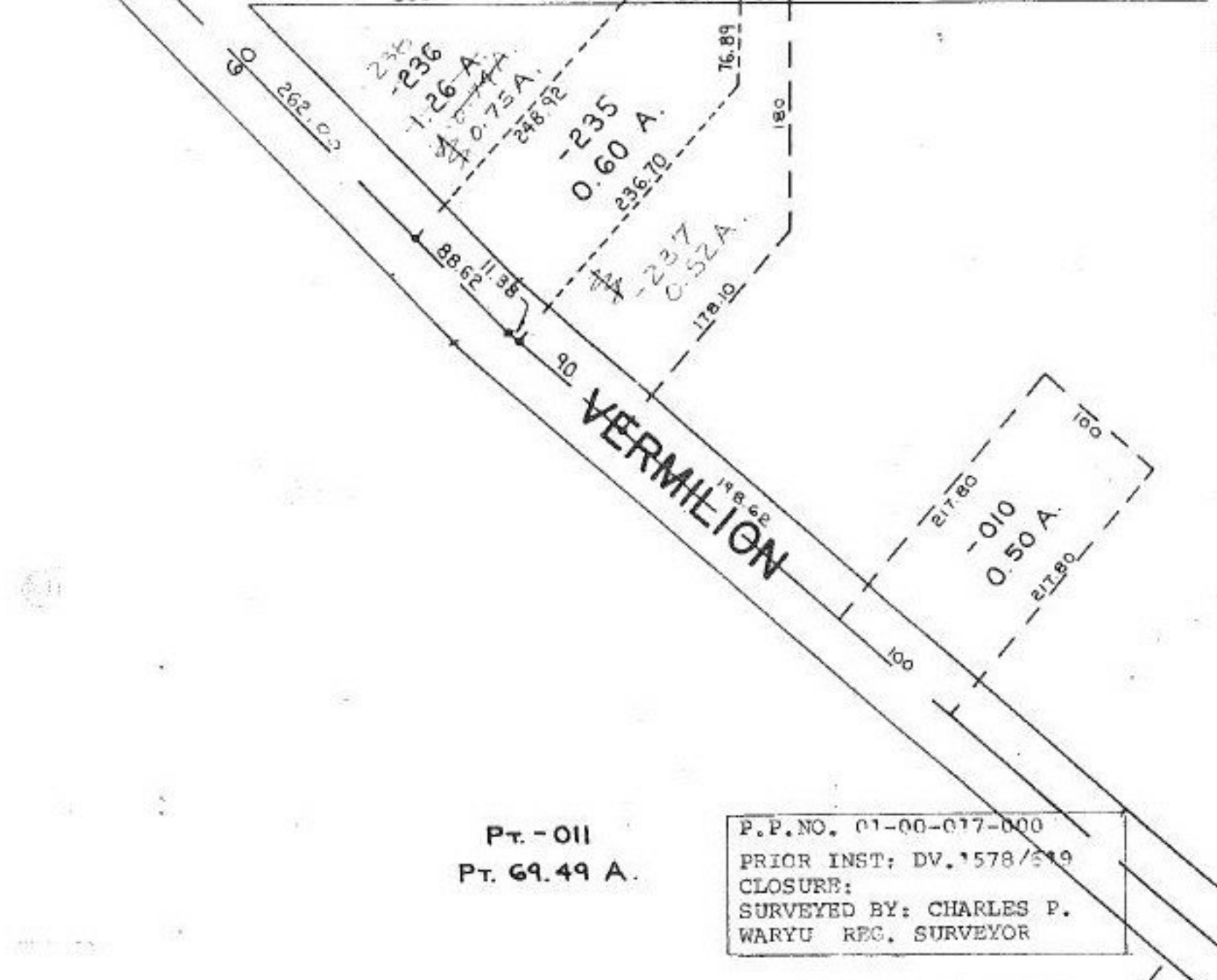


SEE I-A

510 BROWNHELM STATION



Pt. - 011
Pt. 69.49 A.

P.P.NO. 01-00-017-000
 PRIOR INST: DV. 1578/519
 CLOSURE:
 SURVEYED BY: CHARLES P.
 WARYU REG. SURVEYOR

#21153

APPROVED	
LORAIN CO.	
MAP DEPT.	
DATE 11-30-94	
PAGE 1-00-017-8	
BY <i>[Signature]</i>	
VOID AFTER	21153

