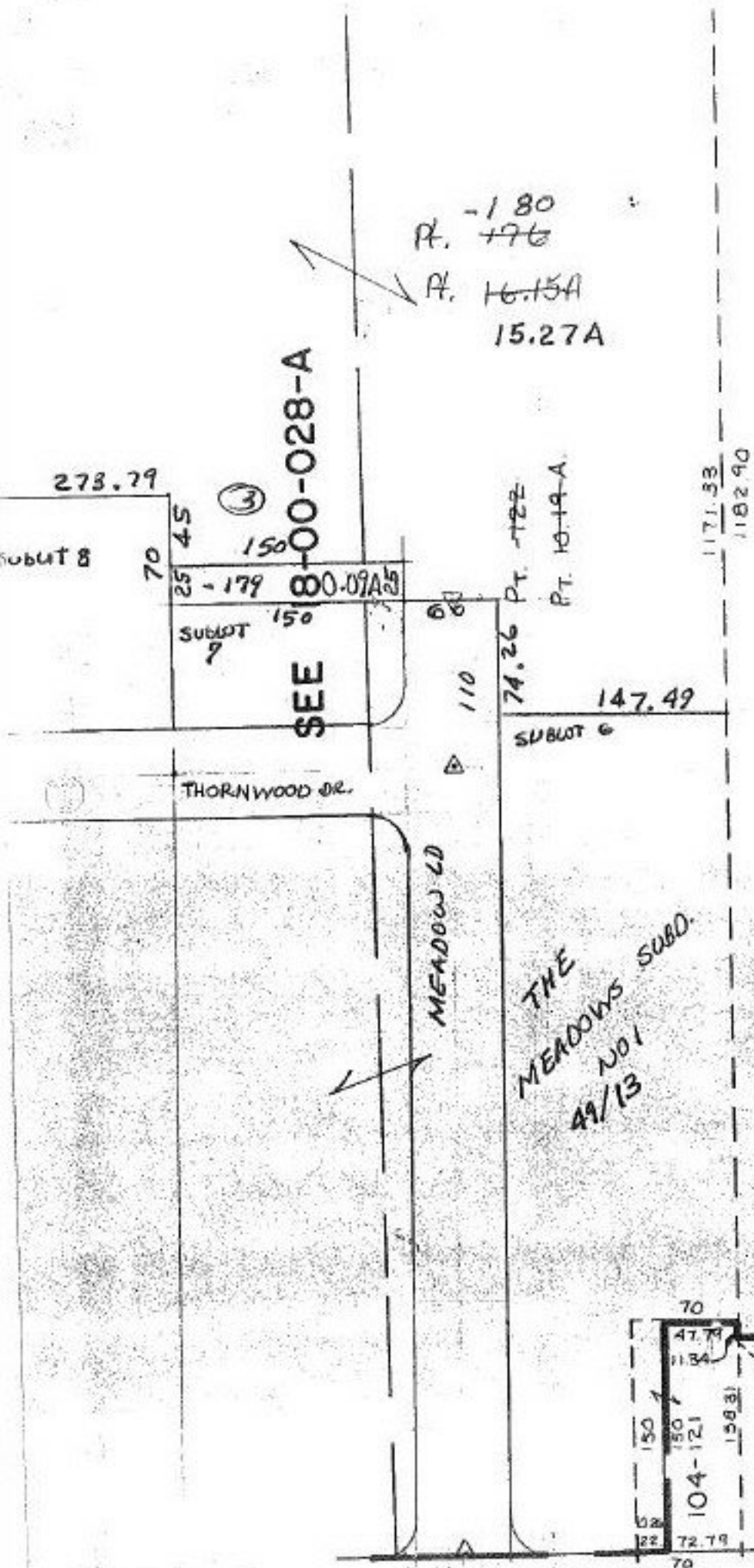


#21112



THORNWOOD DR.

MEADOWS LD

THE MEADOWS SUBD. NO. 1 49/13

P.P. NO. 18-00-028-101  
 PRIOR INST: O.R. 610/509  
 CLOSURE: 0.69ac. 1:58,384  
 0.11ac. 1:38,266  
 0.08ac. 1:INF.  
 SURVEYED BY: KSA ASSOC.

21112  
 APPROVED  
 LORAIN CO.  
 MAP DEPT  
 DATE 11-10-94  
 PAGE 18-00-028B

By Carolyn France  
 102 101 105  
 SUB. NO. 6  
 155.96  
 Vac 0.11 ac. N  
 97-28  
 110 105

SHELL A

CORP.

900-104 60

60