

51.00 A.

- 020
80.37 A.

67

P.P. NO. 11-00-067-000
 PRIOR INST: O.R. 167/834
 CLOSURE: 2.86ad. 1:940,957
 2.76ad. 1:1036,905
 2.48ad. 1:327,046
 4.35ad. 1:488,317
 1.38ad. 1:482,967

SURVEYED BY: KSA

5-25-95
 21107 - 023
 40.93 A.

APPROVED
 ORAIN CO.
 MAP DEPT

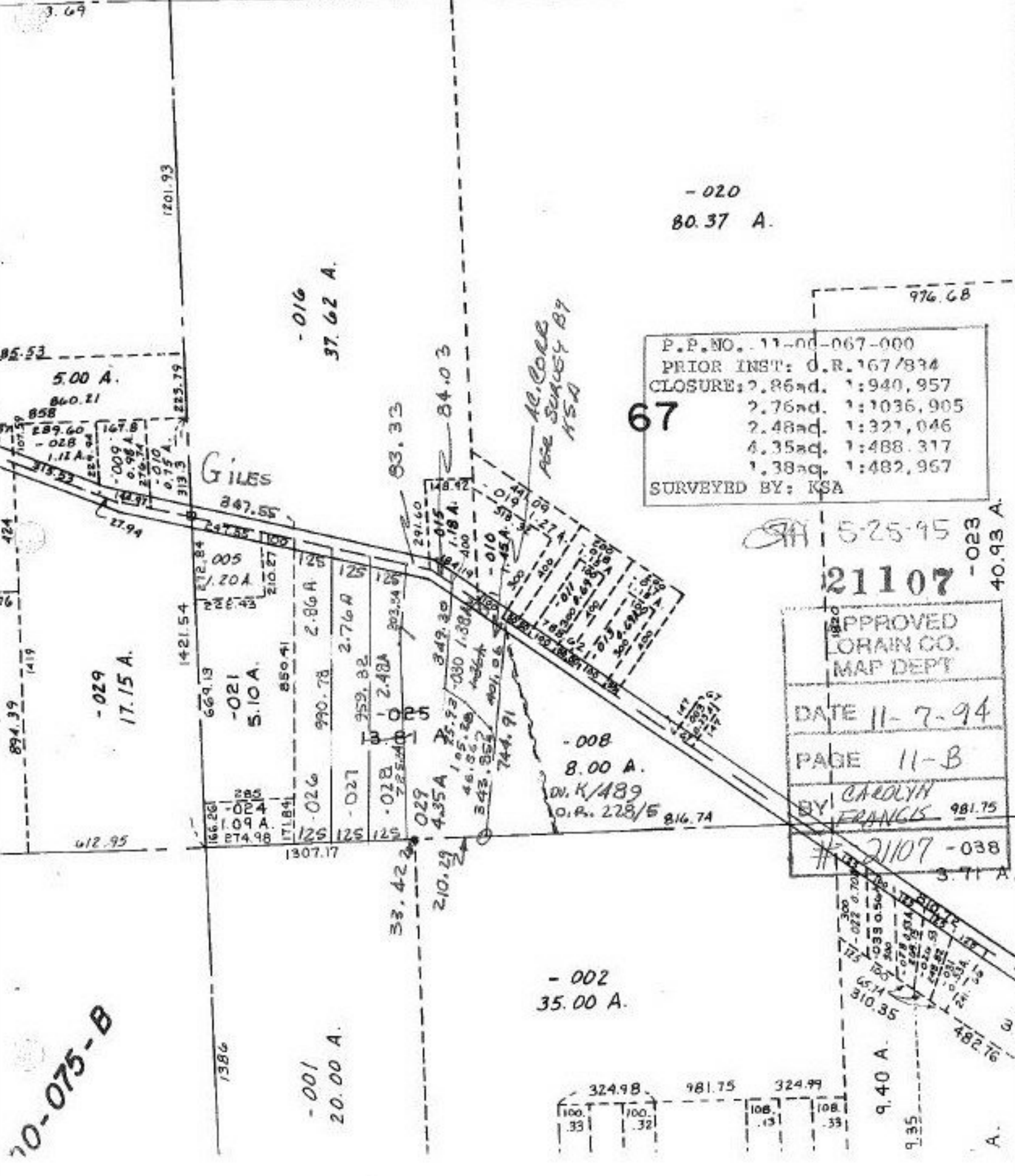
DATE 11-7-94

PAGE 11-B

BY CAROLYN
 FRANCIS 981.75

21107 - 038
 3.71 A.

10-075-B



- 002
35.00 A.

- 001
20.00 A.

324.98	981.75	324.99
100.33	100.32	108.31
108.31	108.33	

9.40 A.
9.35

A.