

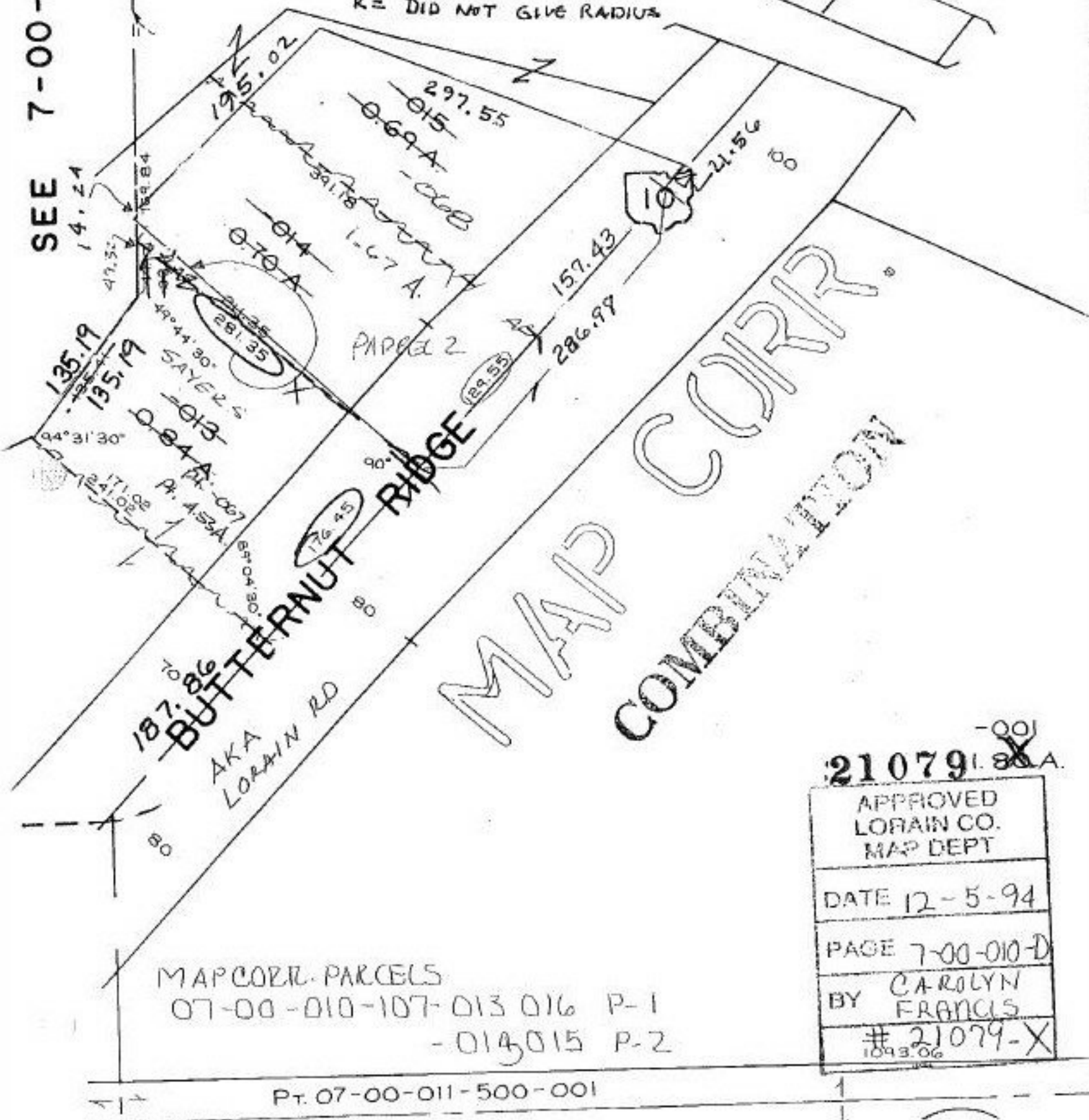
#21079X

OHIO

107

A = 297.58
CH = 297.55
R = DID NOT GIVE RADIUS

SEE 7-00-010-C



21079I.80A

APPROVED LORAIN CO. MAP DEPT
DATE 12-5-94
PAGE 7-00-010-D
BY CAROLYN FRANCIS
21079-X 1093.06