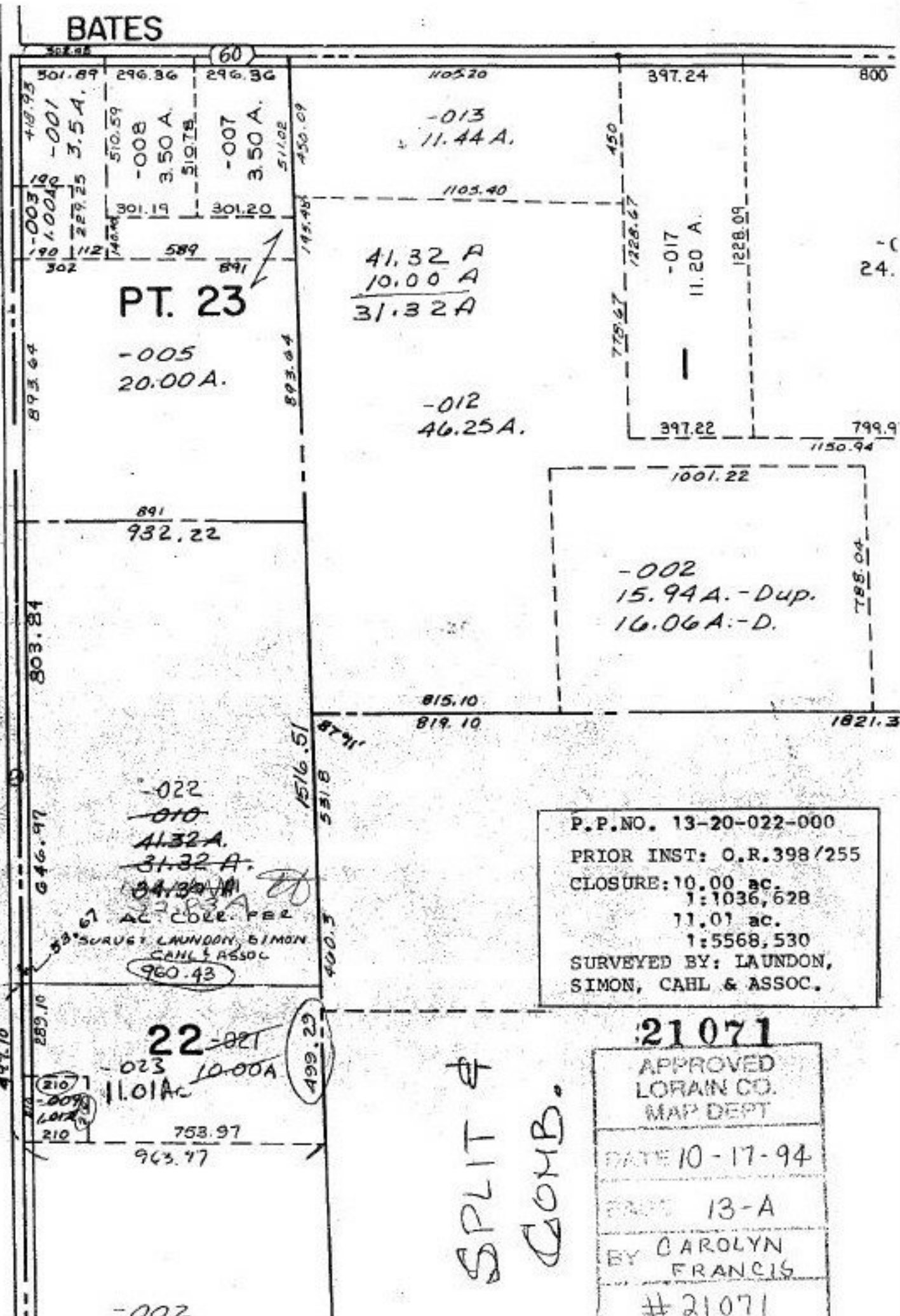


BATES

RD.

GREEN



P.P. NO. 13-20-022-000
PRIOR INST: O.R. 398/255
CLOSURE: 10.00 ac.
1:1036,628
11.01 ac.
1:5568,530
SURVEYED BY: LAUNDON,
SIMON, CAHL & ASSOC.

21071

APPROVED
LORAIN CO.
MAP DEPT

DATE 10-17-94

BY 13-A

BY CAROLYN
FRANCIS

#21071

SPLIT &
COMB.