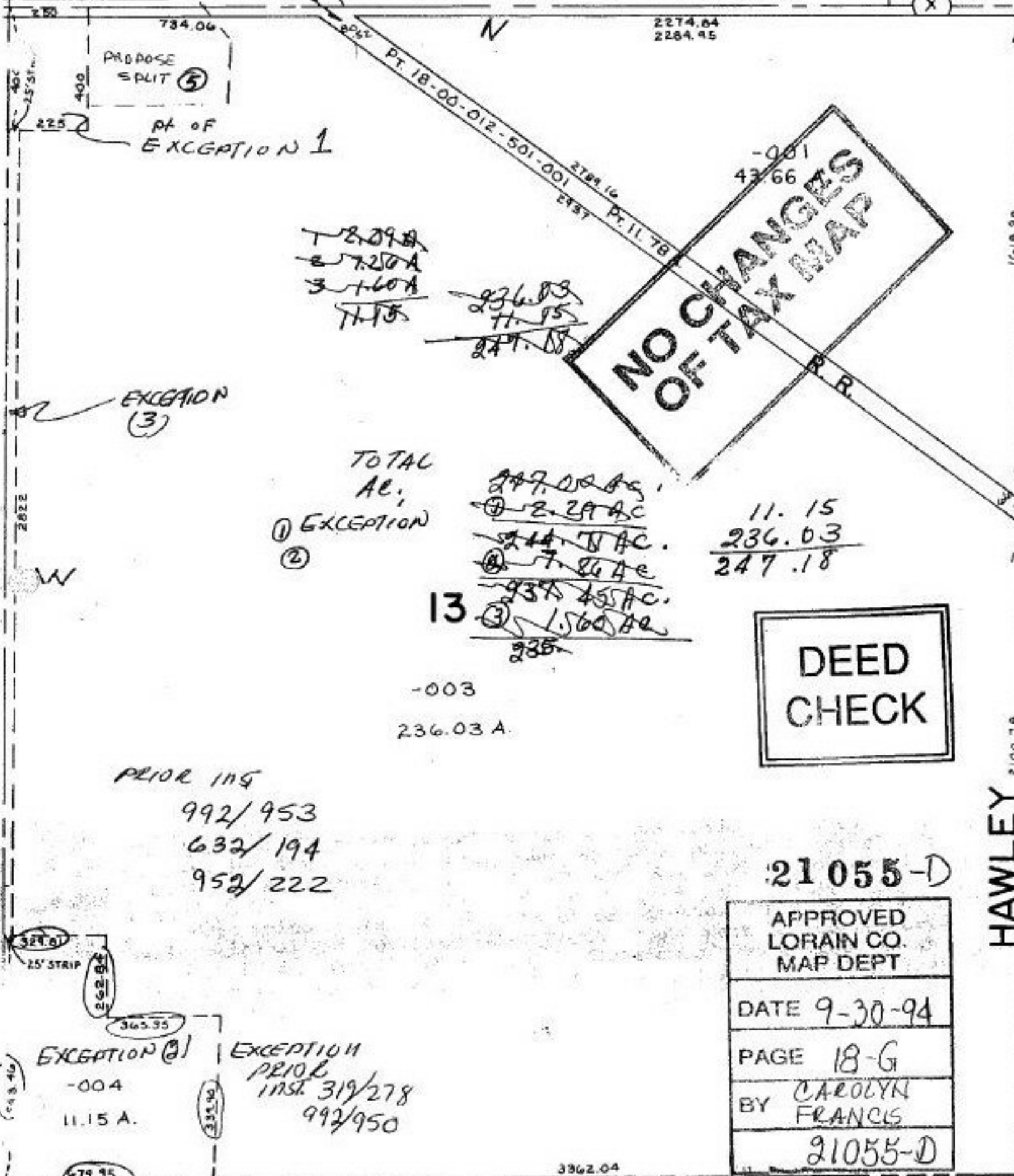


21055-D

7.00 A

3.00 A

JONES RD.



PROPOSED SPLIT ⑤

PT OF EXCEPTION 1

~~2.29 AC~~  
~~2.25 AC~~  
~~3.16 AC~~  
~~7.15~~

~~236.03~~  
~~11.15~~  
~~247.18~~

NO CHANGES OF TAX MAP

EXCEPTION (3)

TOTAL AC:  
 ① EXCEPTION  
 ②

~~247.02 AC~~  
 ① 2.29 AC  
~~244.73 AC~~  
 ② 7.86 AC  
~~937.45 AC~~  
 ③ 1.56 AC  
~~235~~

11.15  
 236.03  
 247.18

13

-003  
 236.03 A.

DEED CHECK

PRIOR INST

992/953  
 632/194  
 952/222

21055-D

APPROVED  
 LORAIN CO.  
 MAP DEPT  
 DATE 9-30-94  
 PAGE 18-G  
 BY CAROLYN FRANCIS  
 21055-D

EXCEPTION ①  
 -004  
 11.15 A.

EXCEPTION  
 PRIOR  
 INST. 319/278  
 992/950

18-G

PARCEL NO 4

③

HAWLEY 2100.76