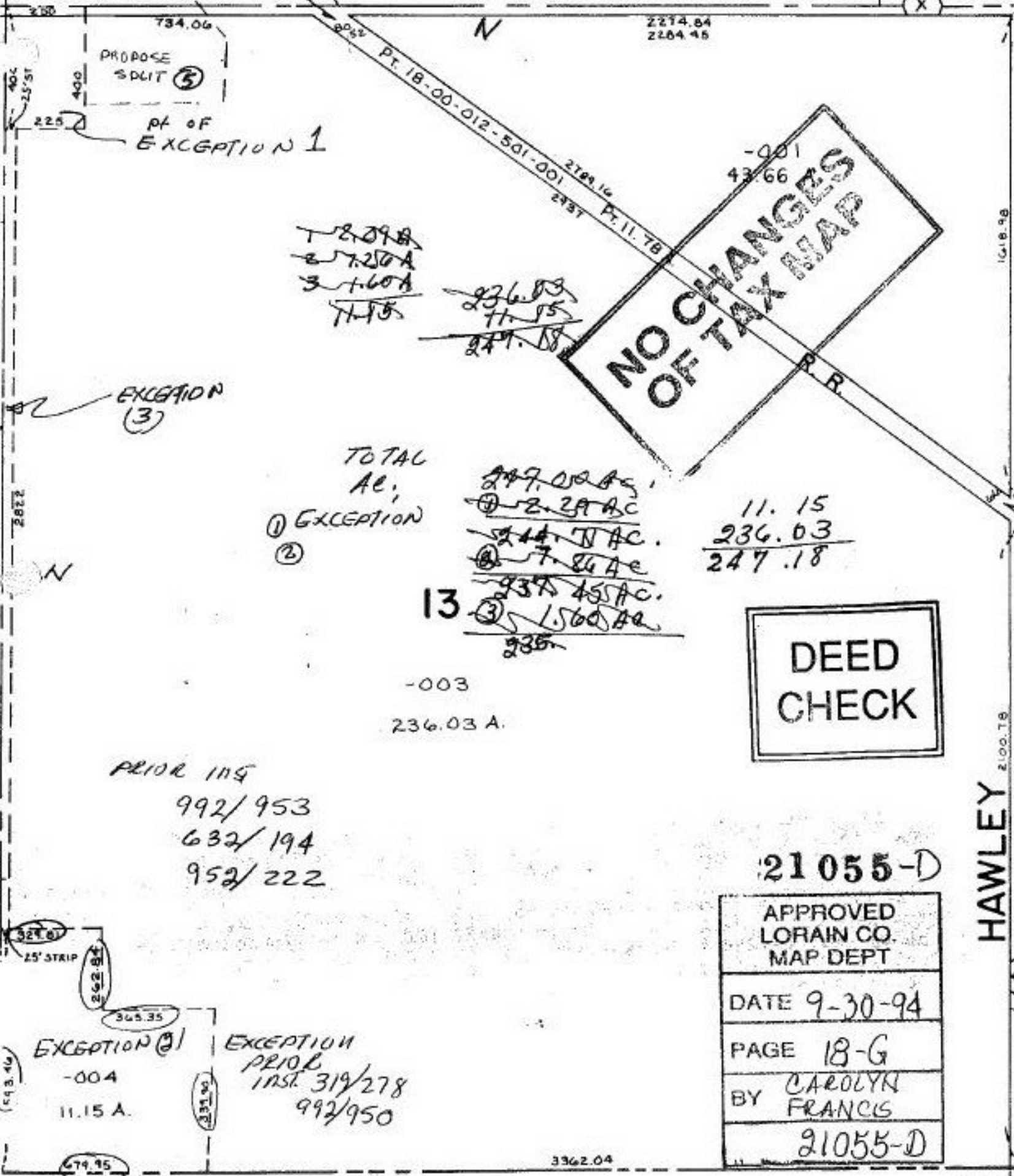


7.00 A.

JONES

RD. #21055

466.67



NO CHANGES
OF TAX MAP

DEED
CHECK

TOTAL
AC;

① EXCEPTION

②

13

③

247.00 AC.

① 2.29 AC.

② 244.74 AC.

③ 7.84 AC.

937.45 AC.

④ 1.560 AC.

235

11.15

236.03

247.18

-003

236.03 A.

PRIOR INST

992/953

632/194

952/222

EXCEPTION (2)

-004

11.15 A.

EXCEPTION

PRIOR

INST. 319/278

992/950

21055-D

APPROVED
LORAIN CO.
MAP DEPT

DATE 9-30-94

PAGE 18-G

BY CAROLYN
FRANCIS

21055-D

18-G

PARCEL NO 4

3

HAWLEY