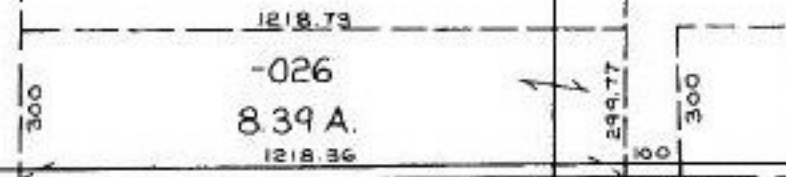
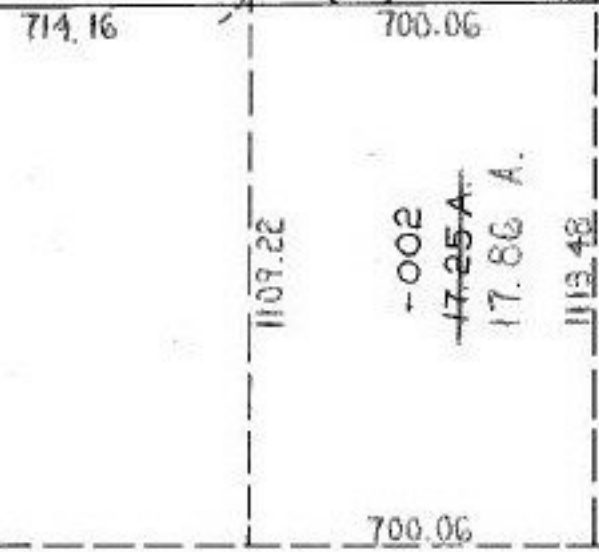


**RUSSIA**



MON. BOX



ACREAGE CORRECTION PER  
 SURVEY BY: LOWELL E. BENDER  
 CLOSURE 1:59,200  
 -003  
 32.00 A.

**28**

**ACREAGE  
 CORRECTION**

-004  
 40.00 A.

-001  
 17.00 A.

-005  
 25.00 A.

9-12-94

**#21029-A**

APPROVED LORAIN CO. MAP DEPT.	
DATE 8-30-94	
PAGE 9-D	
BY T. HOLLIS	
VOID AFTER	21029-A