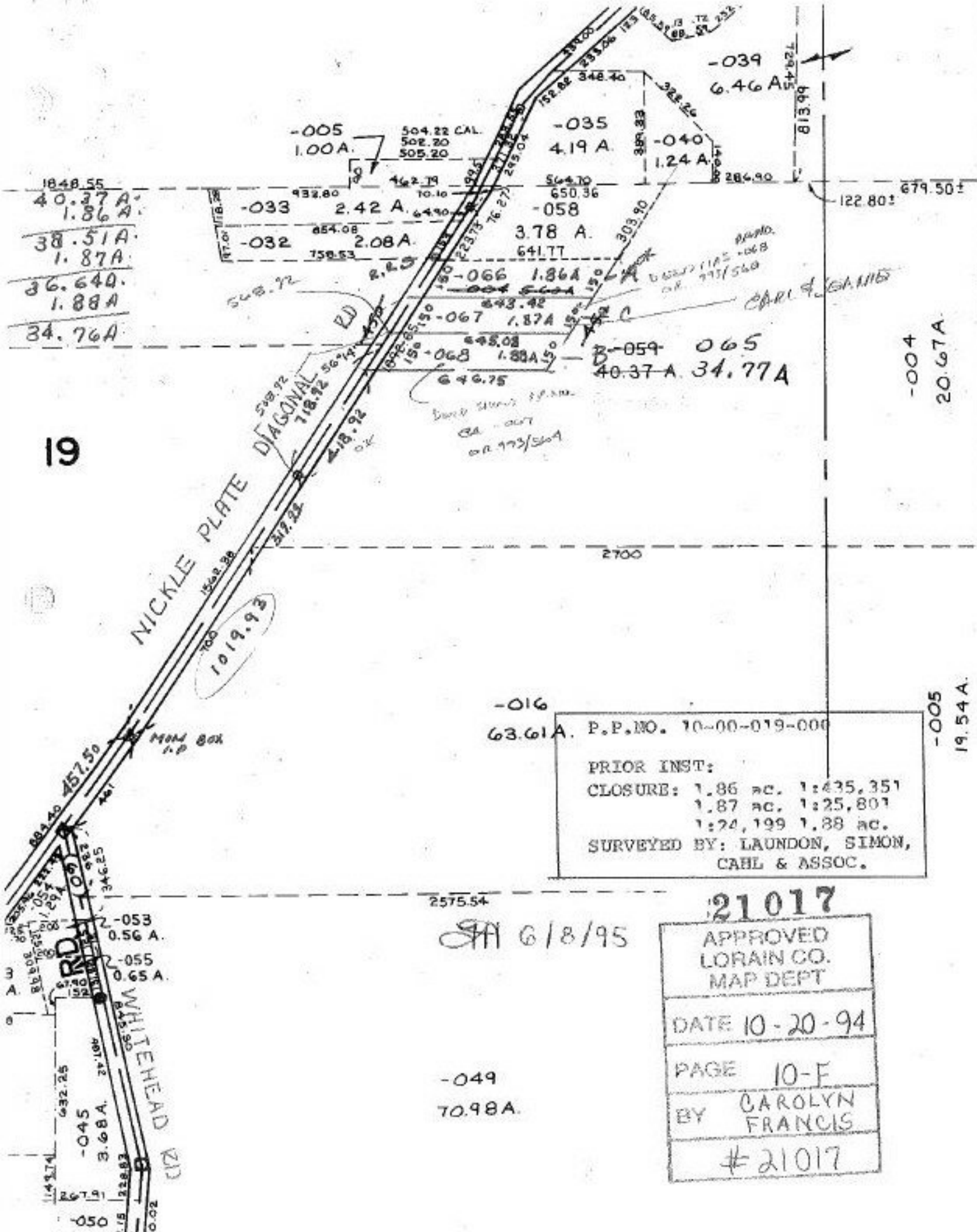


19



NICKLE PLATE  
DIAGONAL  
RD

1019.93

WHITEHEAD  
RD

-016  
63.61A. P.P.NO. 10-00-019-000

PRIOR INST:  
CLOSURE: 1.86 ac. 1:435,351  
1.87 ac. 1:25,801  
1:24,199 1.88 ac.  
SURVEYED BY: LAUNDON, SIMON,  
CAHL & ASSOC.

SA 6/8/95

21017

APPROVED  
LORAIN CO.  
MAP DEPT

DATE 10-20-94

PAGE 10-F

BY CAROLYN  
FRANCIS

#21017

-049  
70.98A.

-004  
20.67A

-005  
19.54A.