

PARENT PARCEL: 03-00-035-103-001 THRU -003

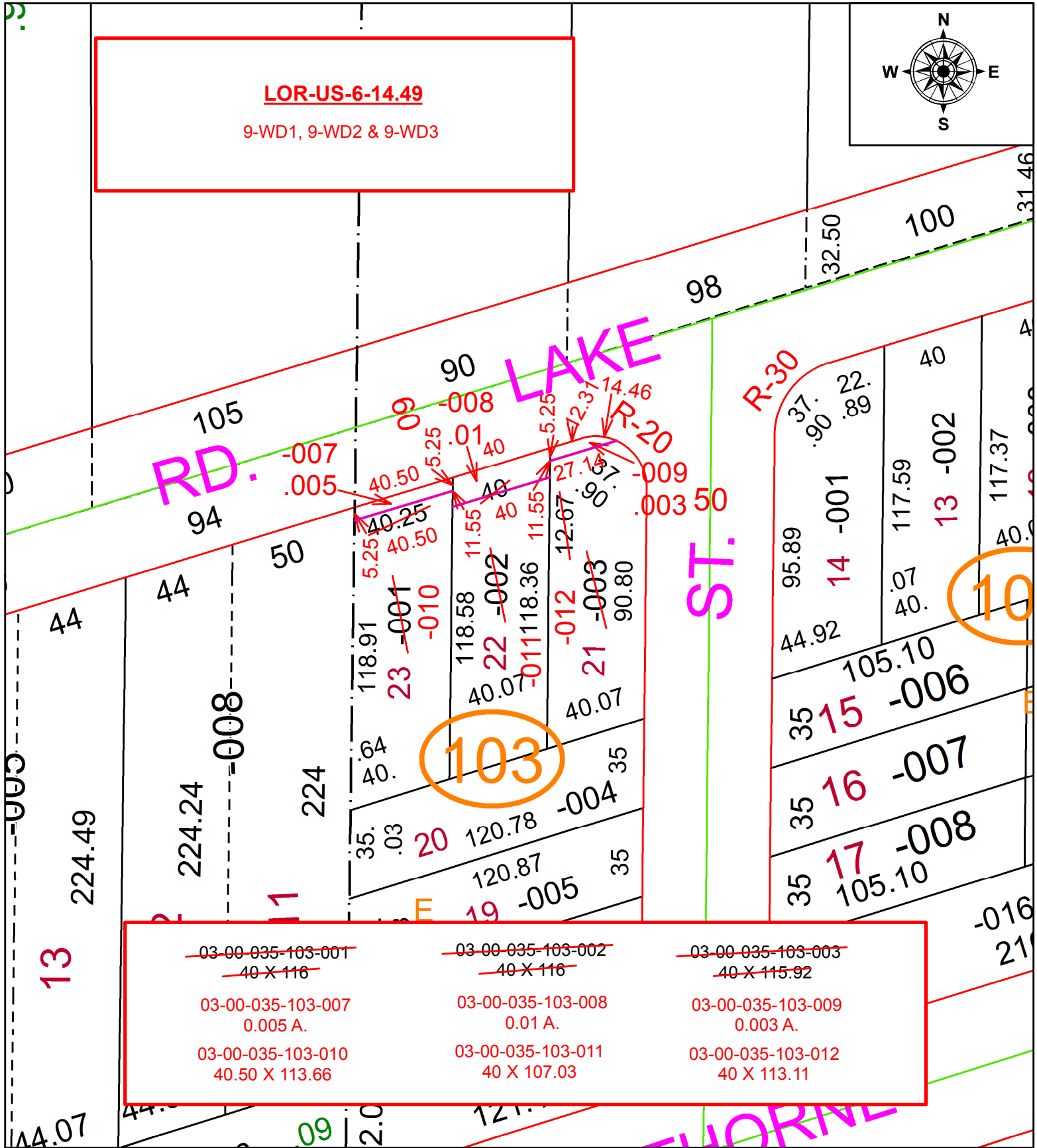
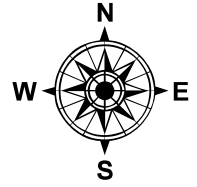
CHILD PARCEL: 03-00-035-103-007 THRU -012

STARTING POINT: INTERSECTION OF C/L OF LAKE RD. AND C/L OF ELM ST.

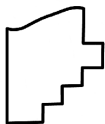
21-00777

**LOR-US-6-14.49**

9-WD1, 9-WD2 & 9-WD3



<del>03-00-035-103-001</del> <del>40 X 116</del>	<del>03-00-035-103-002</del> <del>40 X 116</del>	<del>03-00-035-103-003</del> <del>40 X 115.92</del>
03-00-035-103-007 0.005 A.	03-00-035-103-008 0.01 A.	03-00-035-103-009 0.003 A.
03-00-035-103-010 40.50 X 113.66	03-00-035-103-011 40 X 107.03	03-00-035-103-012 40 X 113.11



**SPLITS/DEEDS PROCESSED**  
LORAIN COUNTY TAX MAP DEPARTMENT  
226 MIDDLE AVE. ELYRIA, OH

SURVEYED BY: AMY M. KELLY  
CLOSURE: 1: 14,793  
MAP PAGE(S): 3-00-035  
APPROVED BY: RRM DATE: 5-3-21  
SCALE: 1" = 50 PRIOR INSTRUMENT: OR 110/434