

2-B

-039
6.54 A.

31
9

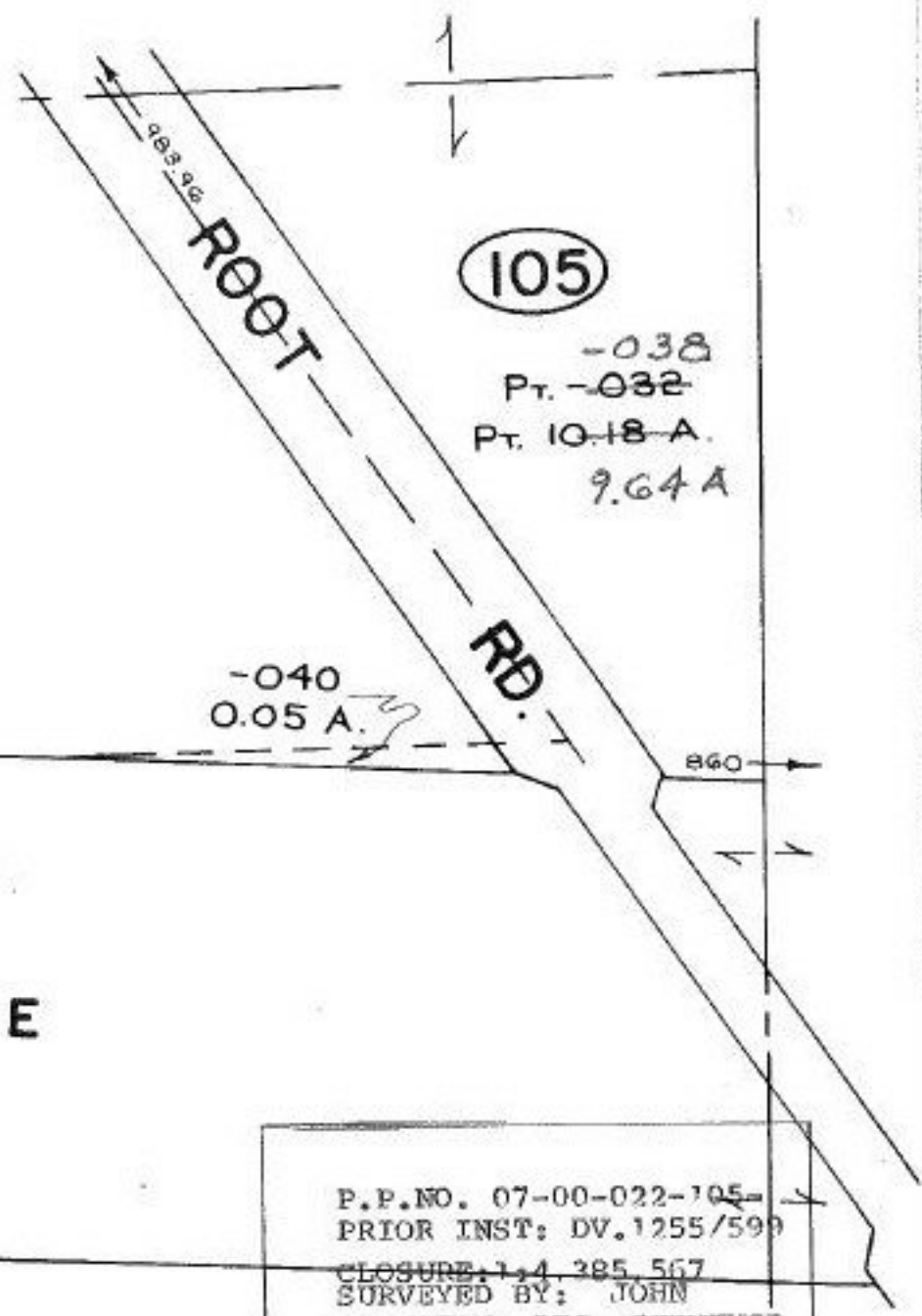
TURNPIKE

1220.17

-041
3.81 A.

PT. -042
PT. 2.00 A.

PT. -043
PT. 10.91 A.



P.P. NO. 07-00-022-105
 PRIOR INST: DV. 1255/599
 CLOSURE: 1,4, 385, 567
 SURVEYED BY: JOHN
 HAMILTON REG. SURVEYOR

STA 9-12-94
 20998

APPROVED LORAIN CO. MAP DEPT
DATE 8-12-94
PAGE 7-00-022-D
BY CAROLYN FRANCIS
20998