

20996 X

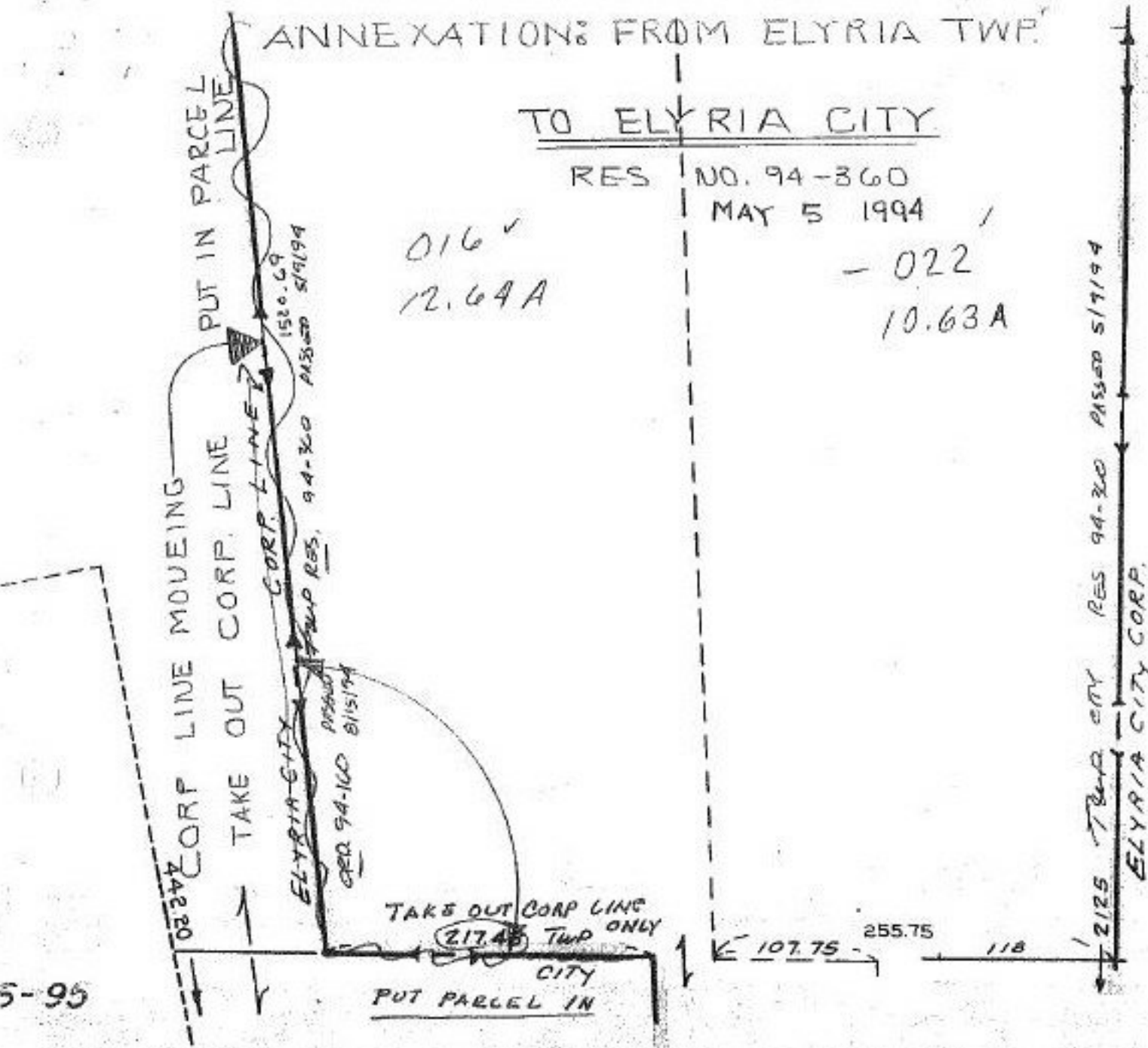
ANNEXATION: FROM ELYRIA TWP.
TO ELYRIA CITY

RES NO. 94-360

MAY 5 1994

016 ✓
12.64 A

- 022
10.63 A



5-95

WEST OF
NE ly PT.
N ly PT. L

20996 X

APPROVED LORAIN CO. MAP DEPT
DATE 10-7-94
PAGE 6-77
BY CAROLYN FRANCIS
20996X