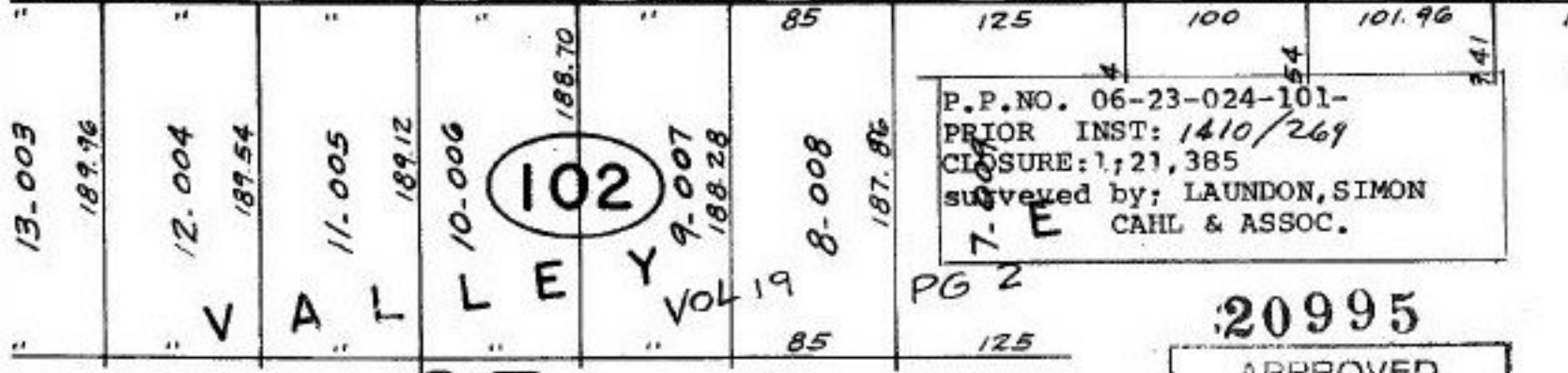
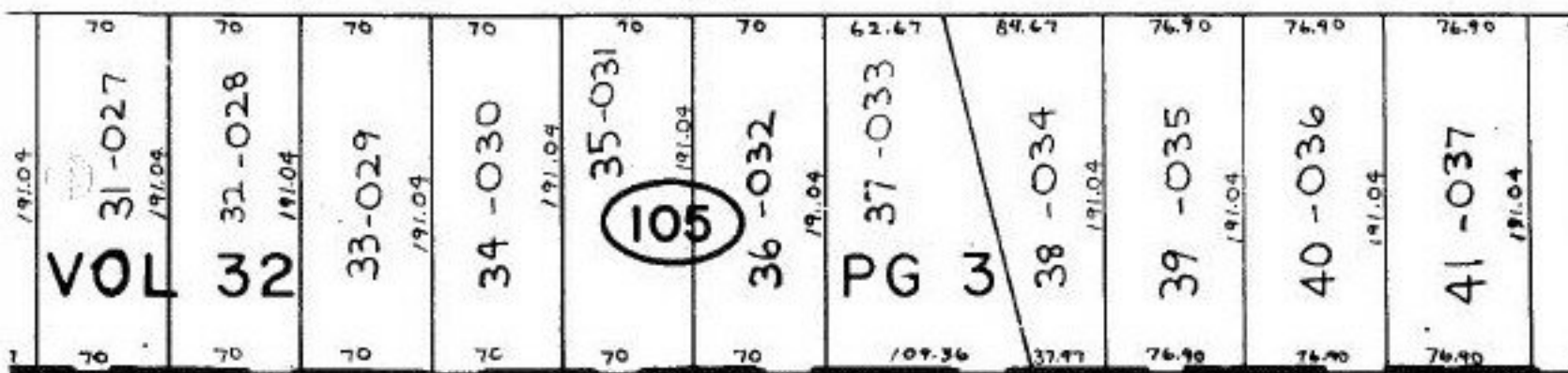
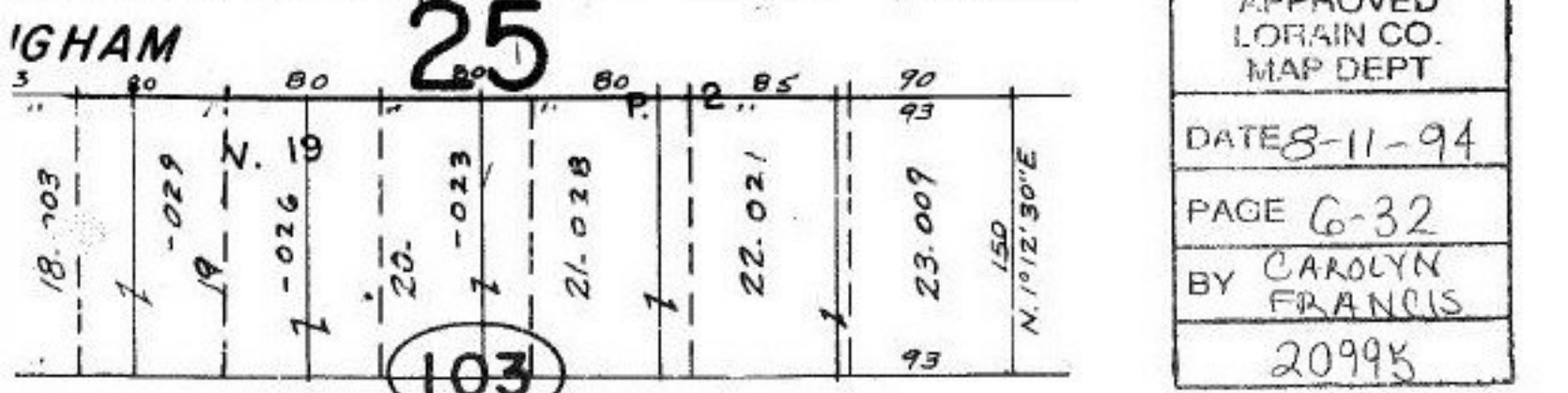


RESTVIEW DR. pt. 900 - 003 pt. 2.64A.



P.P. NO. 06-23-024-101-
PRIOR INST: 1410/269
CLOSURE: 1, 21, 385
surveyed by: LAUNDON, SIMON
CAHL & ASSOC.



20995

APPROVED
LORAIN CO.
MAP DEPT
DATE 8-11-94
PAGE 6-32
BY CAROLYN
FRANCIS
20995