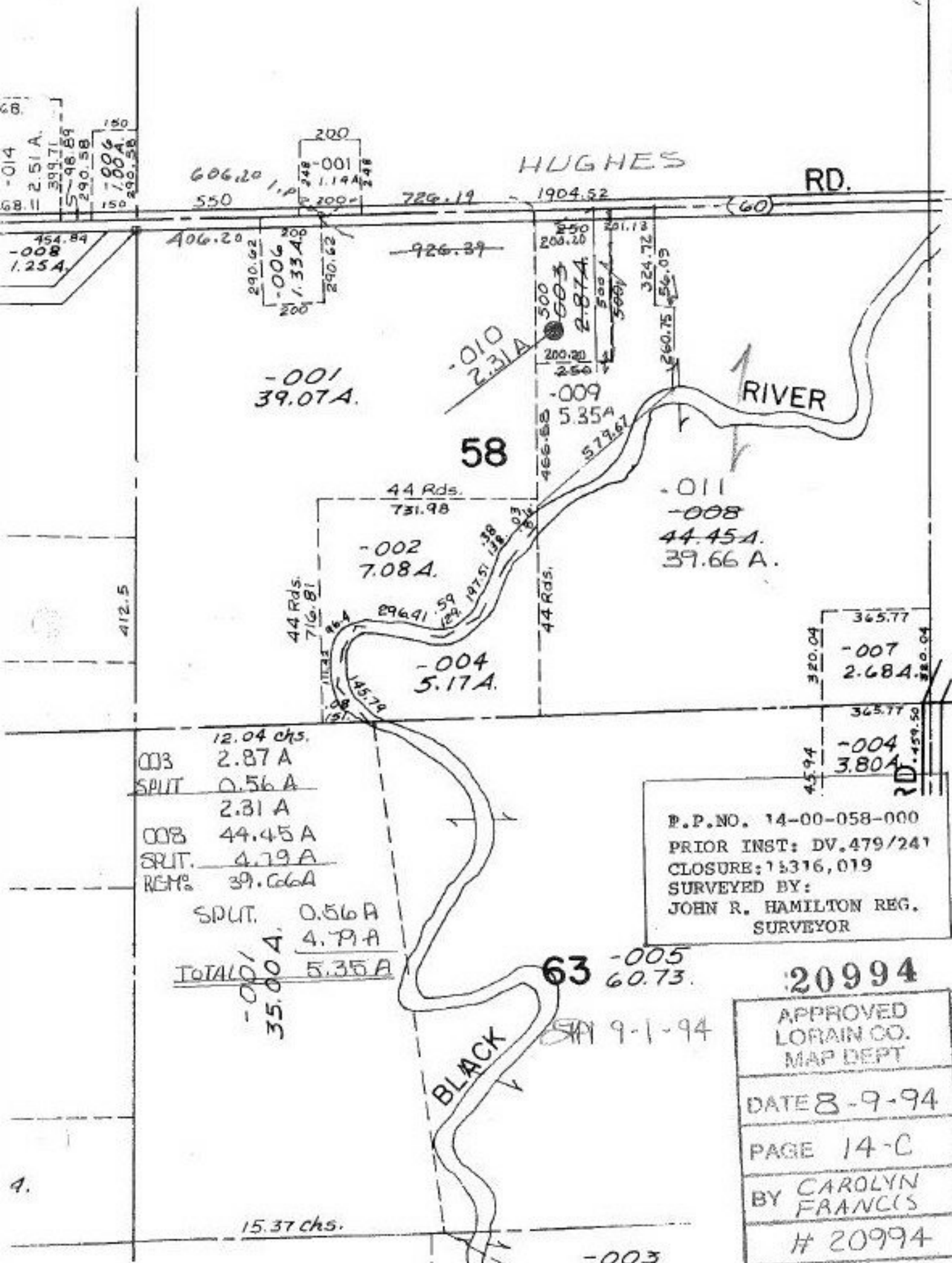


SEE 1



12.04 chs.  
 003 2.87 A  
 SPLIT 0.56 A  
 2.31 A  
 008 44.45 A  
 SPLIT 4.79 A  
 REM% 39.66 A  
 SPLIT 0.56 A  
 4.79 A  
 TOTAL 5.35 A  
 -001 35.00 A

P.P.NO. 14-00-058-000  
 PRIOR INST: DV.479/241  
 CLOSURE: 15316, 019  
 SURVEYED BY:  
 JOHN R. HAMILTON REG.  
 SURVEYOR

20994  
 APPROVED  
 LORAIN CO.  
 MAP DEPT  
 DATE 8-9-94  
 PAGE 14-C  
 BY CAROLYN  
 FRANCIS  
 # 20994

63 -005 60.73.  
 9-1-94

15.37 chs.

-003