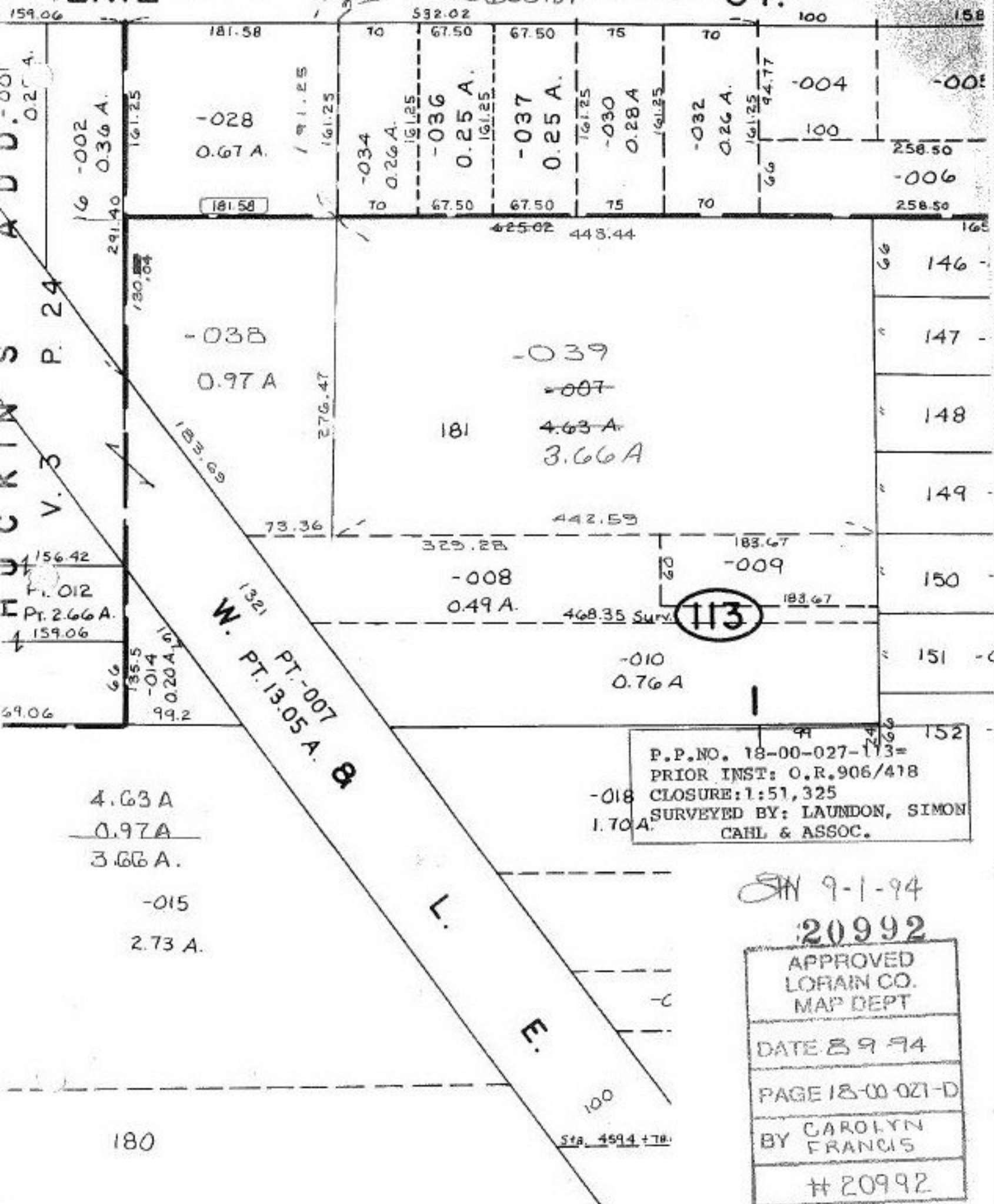


M.B. Rd Center Line of Prospect St with intersecting Center Line of Erie St

ERIE

ST.



P.P. NO. 18-00-027-113 =
 PRIOR INST: O.R. 906/418
 CLOSURE: 1:51,325
 SURVEYED BY: LAUNDON, SIMON
 CAHL & ASSOC.

SIN 9-1-94
 20992

APPROVED
 LORAIN CO.
 MAP DEPT
 DATE 8 9 94
 PAGE 18-00-021-D
 BY CAROLYN
 FRANCIS
 # 20992

4.63 A
 0.97 A
 3.66 A
 -015
 2.73 A

180

Sta. 4594 + 78.