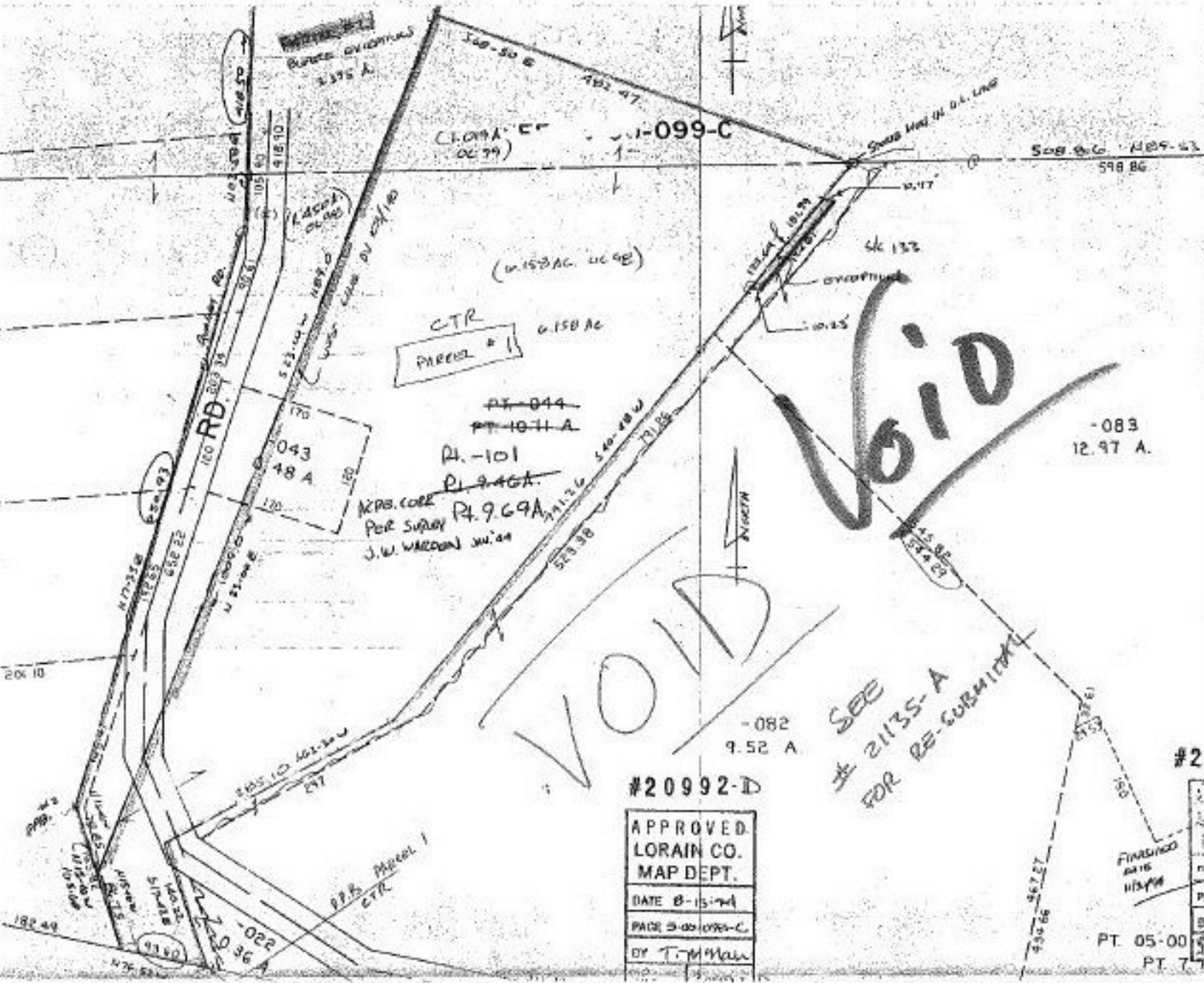


VOID



CTR
PARCEL # 1

PT. 844
PT. 1071A
PT. 101
PT. 944
KRS. CORR
PER SURVY
J.W. WILCOX JUN. 44

VOID

VOID

#20992-D

APPROVED
LORAIN CO.
MAP DEPT.
DATE 8-15-74
PAGE 3-00 1099-C
BY T.M. MAH

SEE
21135-A
FOR RE-CORRECT

FINISHED
DATE
11/3/74
PT. 05-00
PT. 7