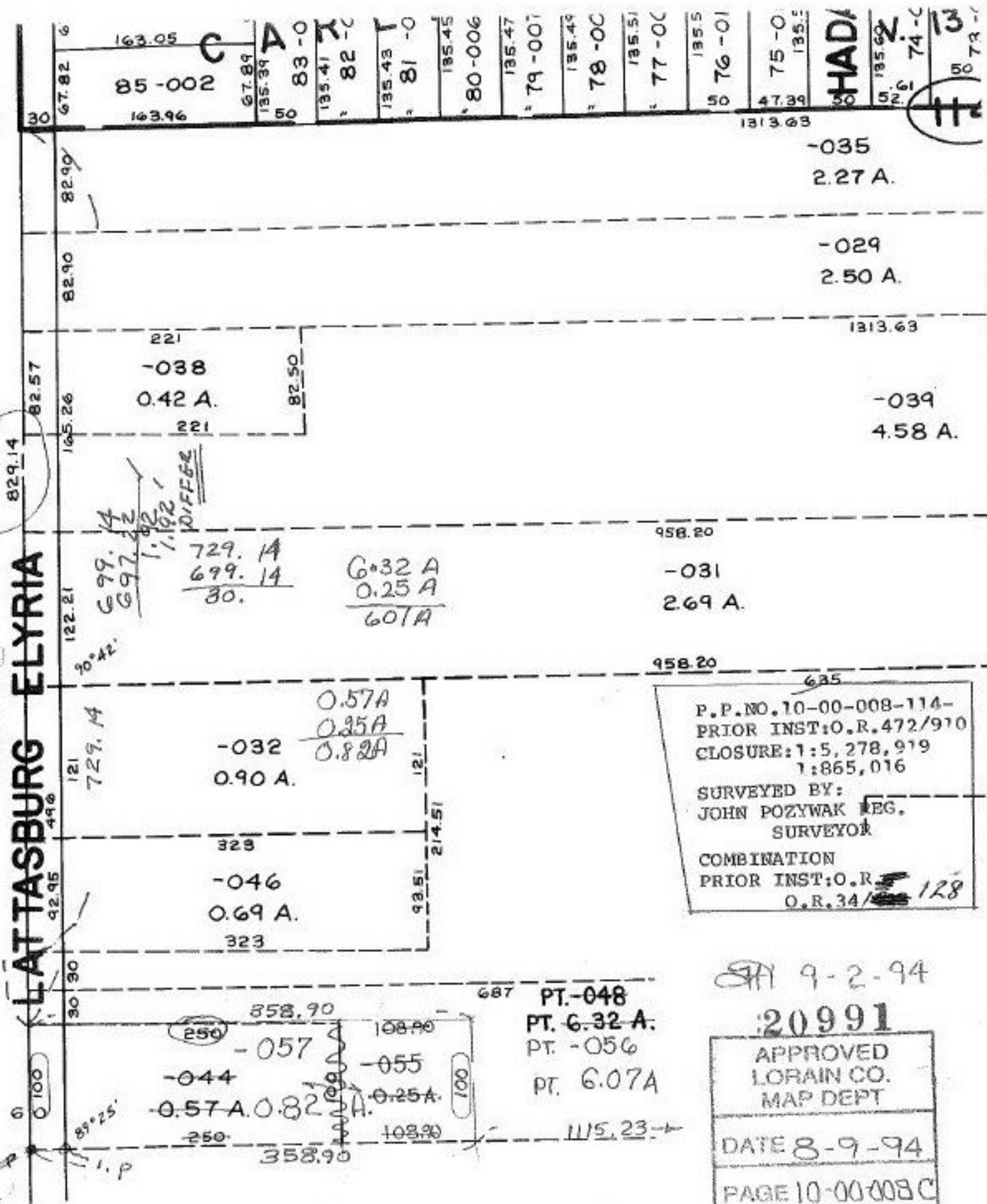


729.14  
727.2

LATASBURG ELYRIA



958.20

-031  
269 A.

958.20

635  
 P.P. NO. 10-00-008-114-  
 PRIOR INST: O.R. 472/910  
 CLOSURE: 1:5, 278, 919  
 1:865, 016  
 SURVEYED BY:  
 JOHN POZYWAK REG.  
 SURVEYOR  
 COMBINATION  
 PRIOR INST: O.R. 128  
 O.R. 34/

687  
 PT. -048  
 PT. G.32 A.  
 PT. -056  
 PT. G.07A

9-2-94

20991

APPROVED  
 LORAIN CO.  
 MAP DEPT  
 DATE 8-9-94  
 PAGE 10-00-008C  
 BY CAROLYN  
 FRANCIS  
 # 20991

829.14

82.57

82.90

82.90

67.82

0.42 A.

-038

221

221

729.14  
 699.14  
 30.

G.32 A  
 0.25 A  
 607A

-032  
 0.90 A.

0.57A  
 0.35A  
 0.82A

-046  
 0.69 A.

-044  
 -057  
 -055  
 0.57 A. 0.82 A.  
 0.25 A.

115.23

-035  
2.27 A.

-029  
2.50 A.

1313.63

-039  
4.58 A.

1313.63

HADI

135.60  
 52.6  
 74-C  
 13  
 50  
 73-C

163.05  
 85-002  
 163.46

67.84  
 135.39  
 50  
 83-0

135.41  
 82-C

135.43  
 81-0

135.45  
 80-006

135.47  
 79-007

135.49  
 78-0C

135.51  
 77-0C

135.5  
 76-01

47.39  
 75-0  
 135.5