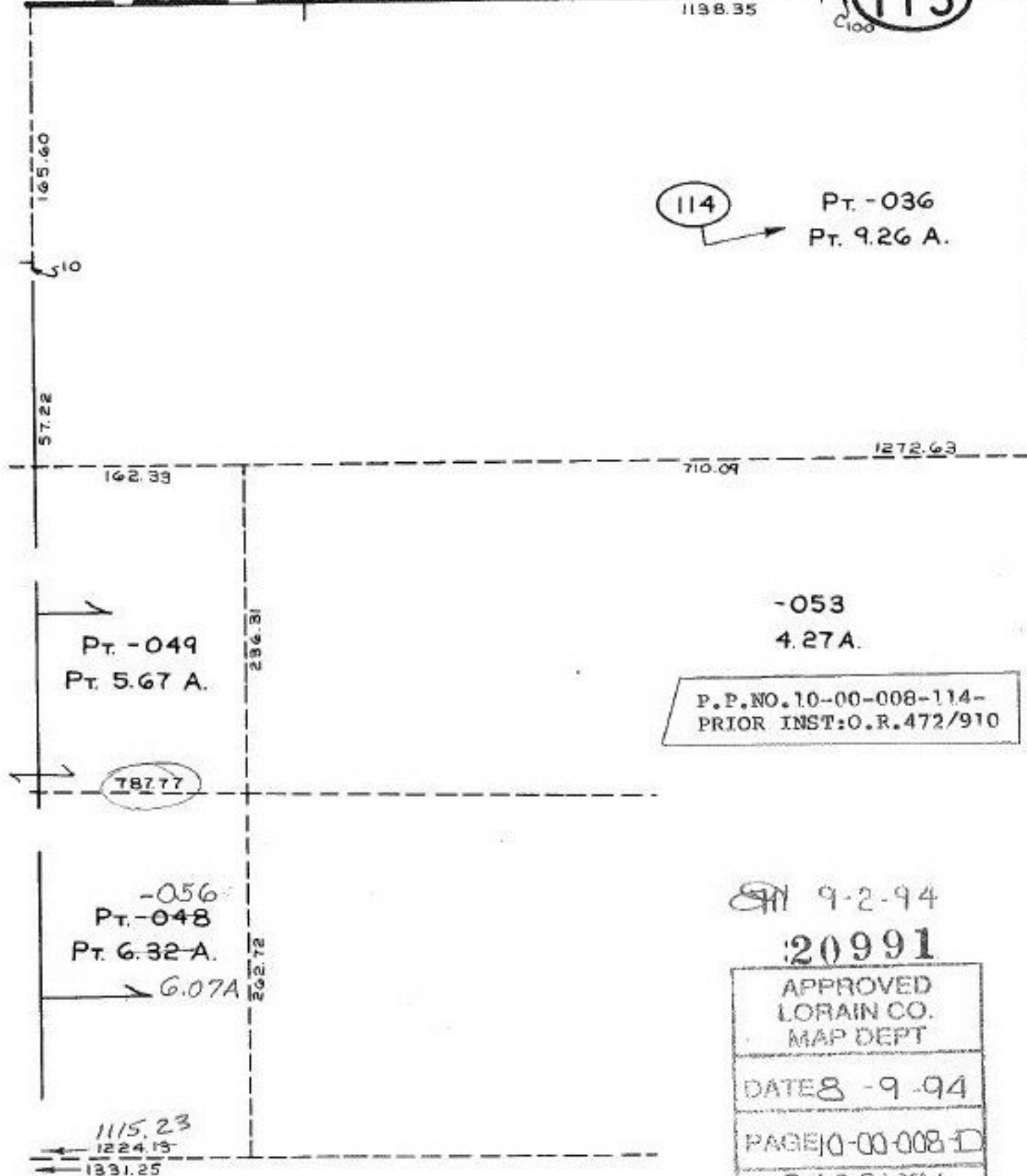


50 GETZ  
 57 135.97  
 58 -001  
 59 136  
 57-002  
 56 136.02  
 56-003  
 55 136.04  
 55-004  
 54 136.06  
 54-005  
 53 136.08  
 53-006  
 52 136.10  
 52-007  
 51 136.12  
 51-008  
 50 136.14  
 50-017  
 49 136.16  
 49-010  
 136.18



114 → Pt. -036  
 Pt. 9.26 A.

-053  
 4.27 A.  
 P.P. NO. 10-00-008-114-  
 PRIOR INST: O.R. 472/910

9-2-94

20991

APPROVED LORAIN CO. MAP DEPT
DATE 8-9-94
PAGE 10-00-008-D
BY CAROLYN FRANCIS
#20991