

PT. - 024
PT. 24.31 A.

3.22 A
0.15 A

3.07 A

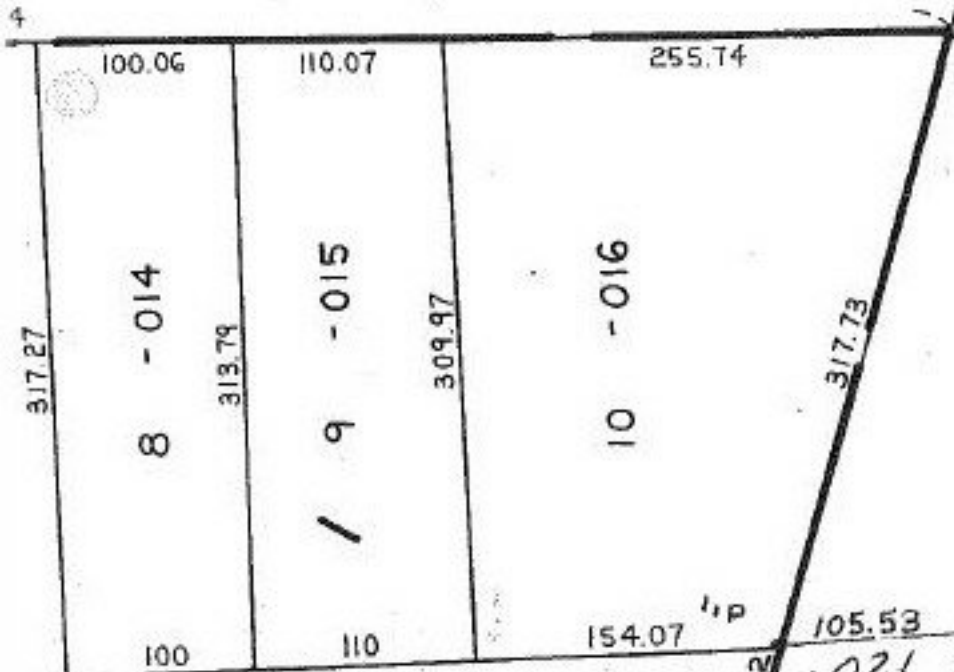
20981

PT. 05-00-062-105-022
PT. 3.22 A
3.07 A

-001
1.64 A.

744.50

SEE 5-00-079-A



P.P. NO. 05-00-062-105-
PRIOR INST: DV. 1146/258
CLOSURE: 1:INF.
SURVEYED BY: KS ASSOC.

20981

APPROVED LORAIN CO. MAP DEPT
DATE 8-4-94
PAGE 5-00-062B
BY CAROLYN FRANCIS
20981

DR. N O. KAY

AVE

-019
0.51 A.

(A)