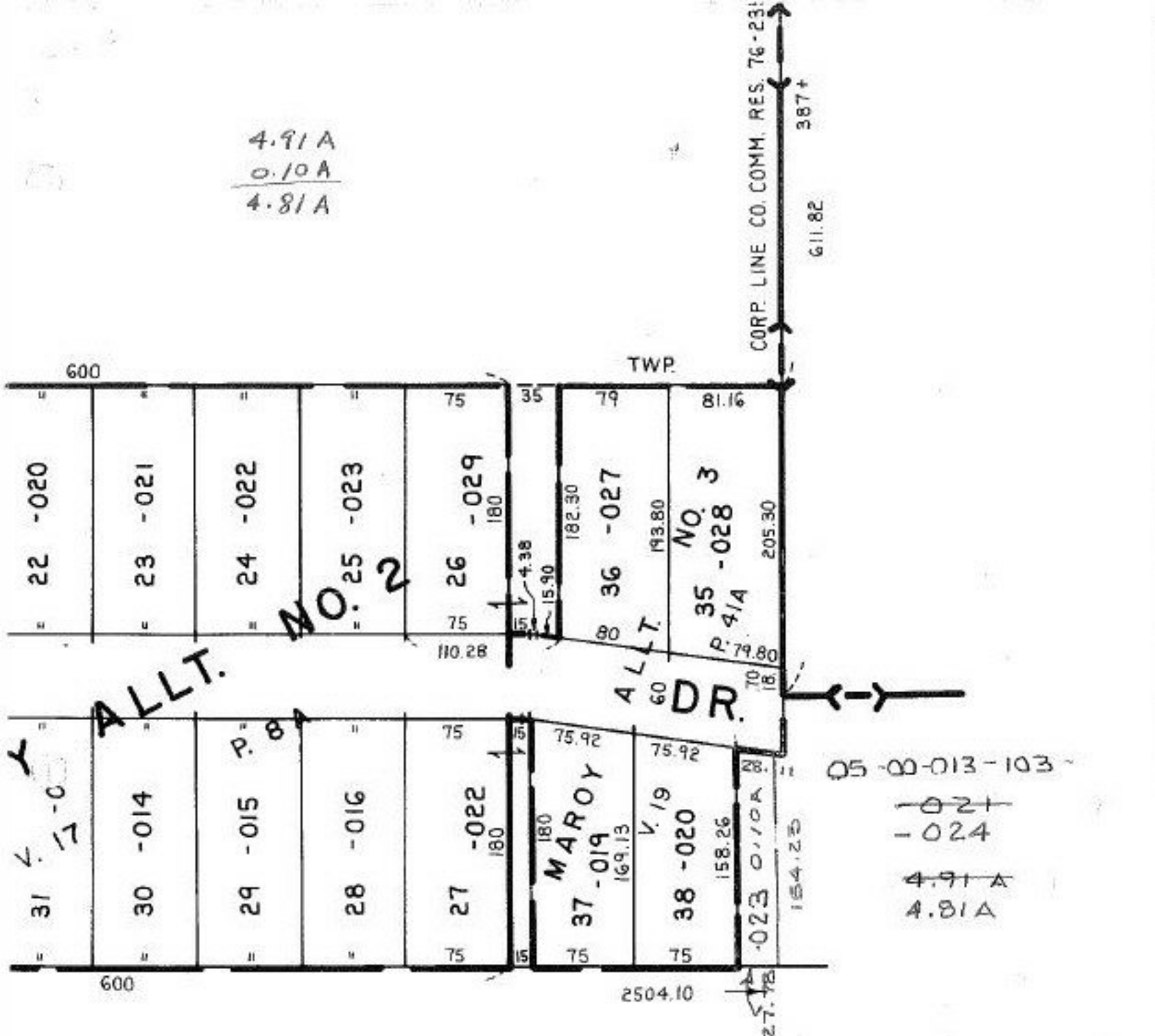


4.91 A
 0.10 A
 4.81 A



05-00-013-103-
~~021~~
~~024~~
 4.91 A
 4.81 A

05-00-013-103-
 PRIOR INST: O.R. 938/829
 CLOSURE: .10 ac. C=1:48,371
 SURVEYED BY: EARL H. HUNTER
 REG. SURVEYOR

9-7-94-20964

APPROVED
 LORAIN CO.
 MAP DEPT
 DATE 7-22-94
 PAGE 5-00-013 A
 BY CAROLYN
 FRANCIS
 20964

ERST TWP.
 : 100'