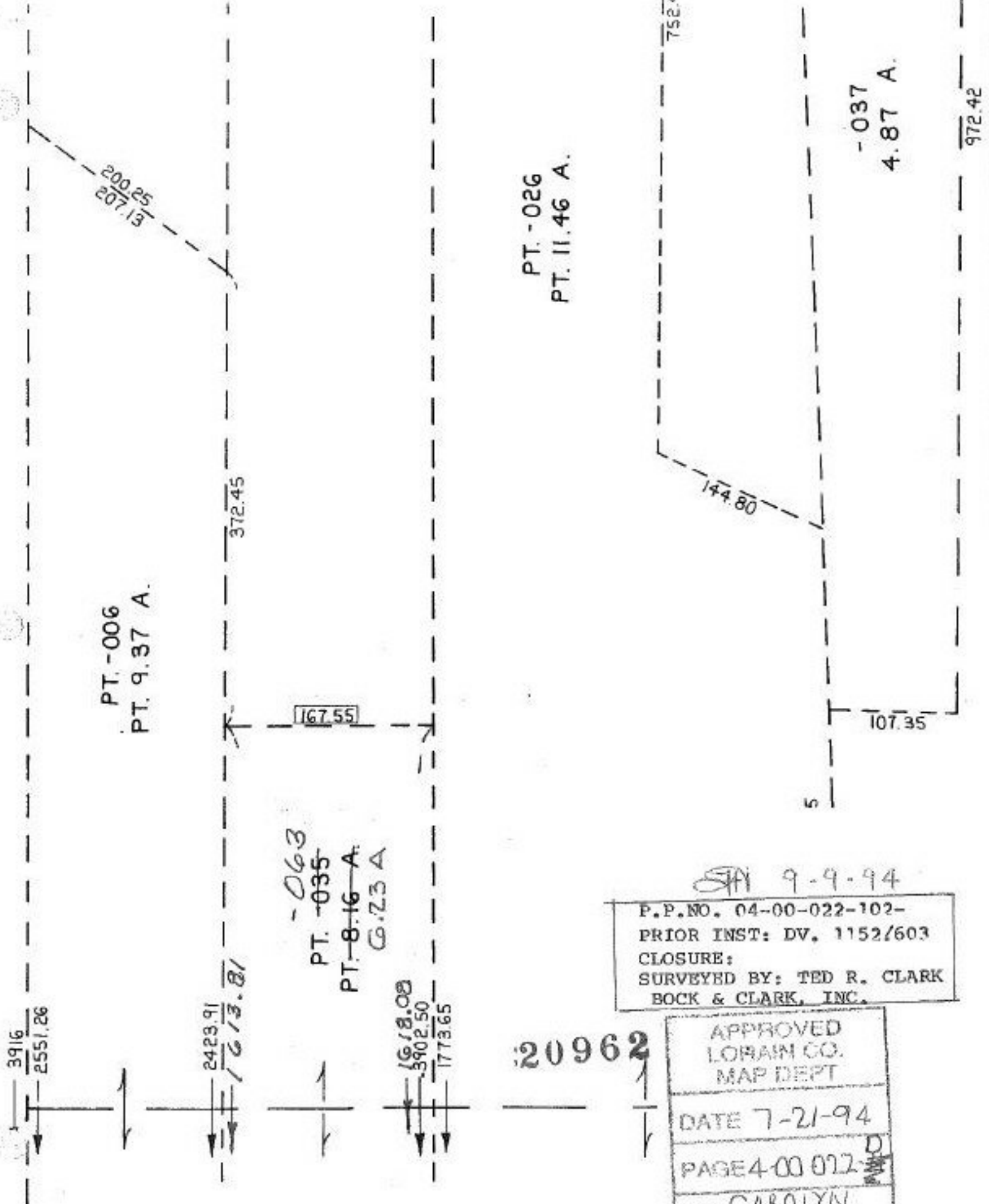


SE



PT.-006  
PT. 9.37 A.

~~PT.-035~~  
PT. 8.16 A.  
6.73 A.

PT.-026  
PT. 11.46 A.

-037  
4.87 A.

STN 9-9-94  
P.P.NO. 04-00-022-102-  
PRIOR INST: DV. 1152/603  
CLOSURE:  
SURVEYED BY: TED R. CLARK  
BOCK & CLARK, INC.

20962

APPROVED  
LORAIN CO.  
MAP DEPT  
DATE 7-21-94  
PAGE 4-00 022-  
BY CAROLYN  
FRANCIS  
# 20962