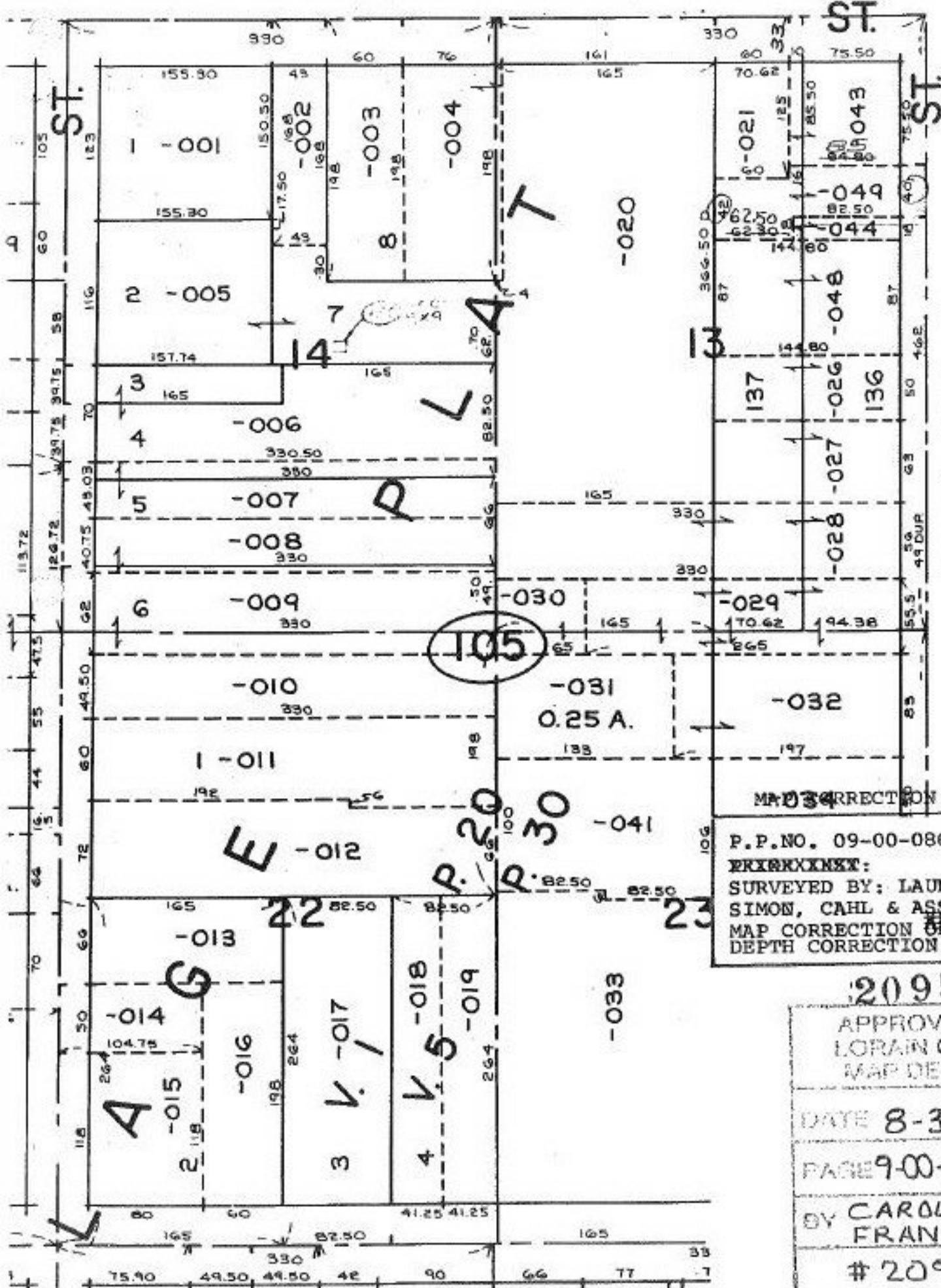


20950 X

9-00-076-A

$\frac{60}{145}$   $\frac{62.50}{145.00}$

EAST LORAIN



NORTH PARK ST.  
 09-00-086-105-049  
 DEPTH CORR. TO DUP.

MAP CORRECTION  
 P.P. NO. 09-00-086-105-  
~~XXXXXXXXXX~~  
 SURVEYED BY: LAUNDON,  
 SIMON, CAHL & ASSOC.  
 MAP CORRECTION ONLY  
 DEPTH CORRECTION TO DUP.

20950X  
 APPROVED  
 LORAIN CO.  
 MAP DEPT  
 DATE 8-30-94  
 PAGE 9-00-086-A  
 BY CAROLYN  
 FRANCIS  
 # 20950X