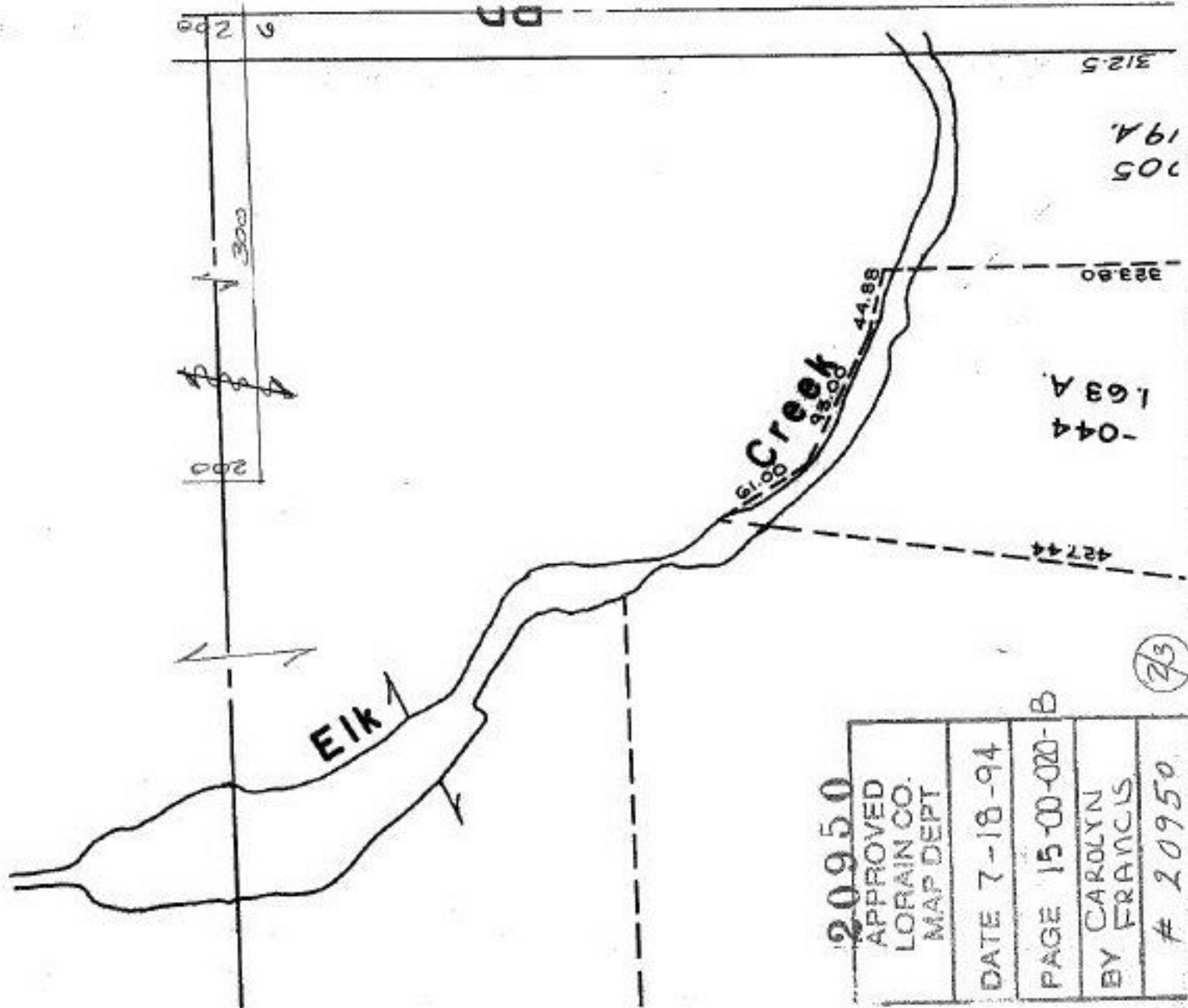


SEE 15-A



#20950 - 002
Pt. 15-00-001-000-005
Pt. 40-00A: 37.24A.



20950	
APPROVED	
LORAIN CO.	
MAP DEPT	
DATE 7-18-94	
PAGE 15-00-020-B	
BY CAROLYN	
FRANCIS	
# 20950	

P.P. NO. 15-00-001-000-
 PRIOR INST: O.R. 687/272
 CLOSURE: 1 & 2 C=1: INF.
 SURVEYED BY: KSA

Pt. -049
 Pt. 28.11 A.