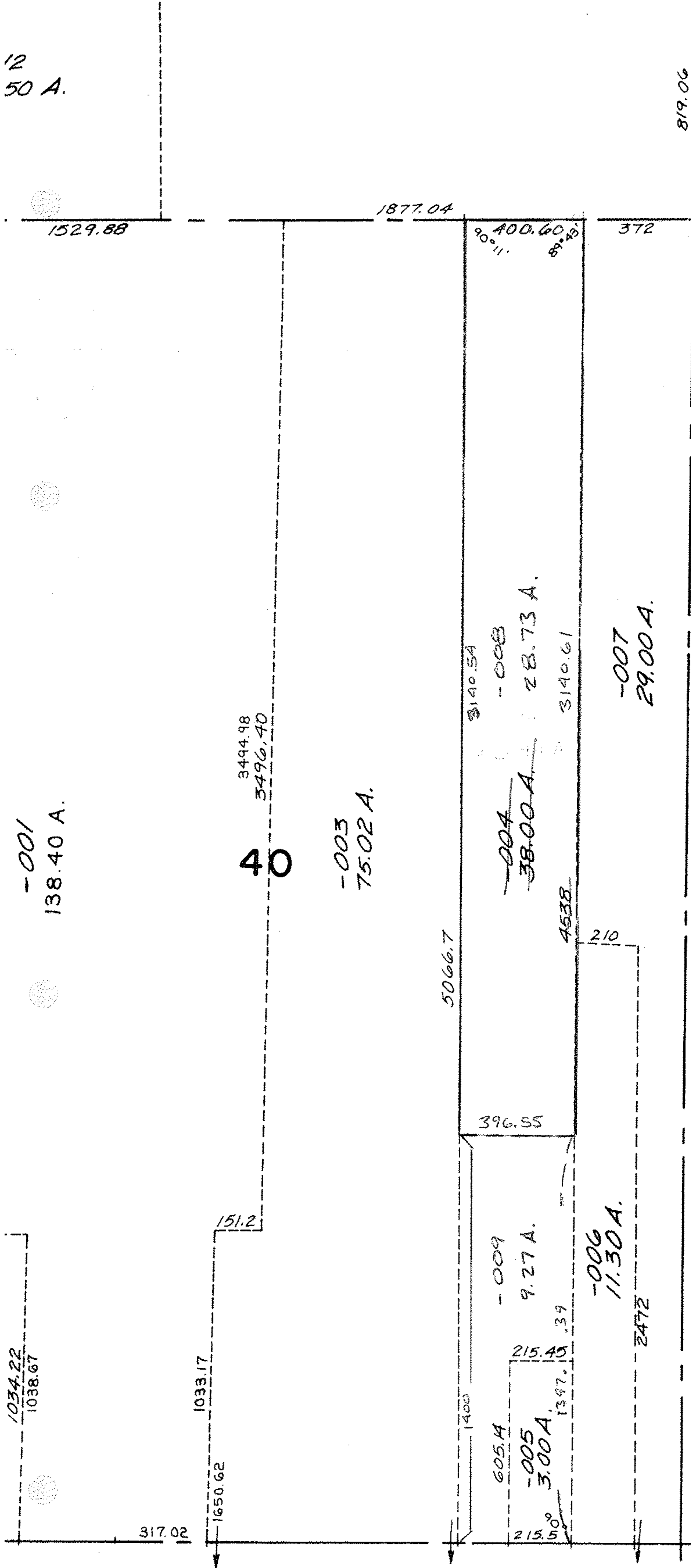


12
50 A.



-001
138.40 A.

1529.88

1877.04

819.06

40
3494.98
3496.40

-003
75.02 A.

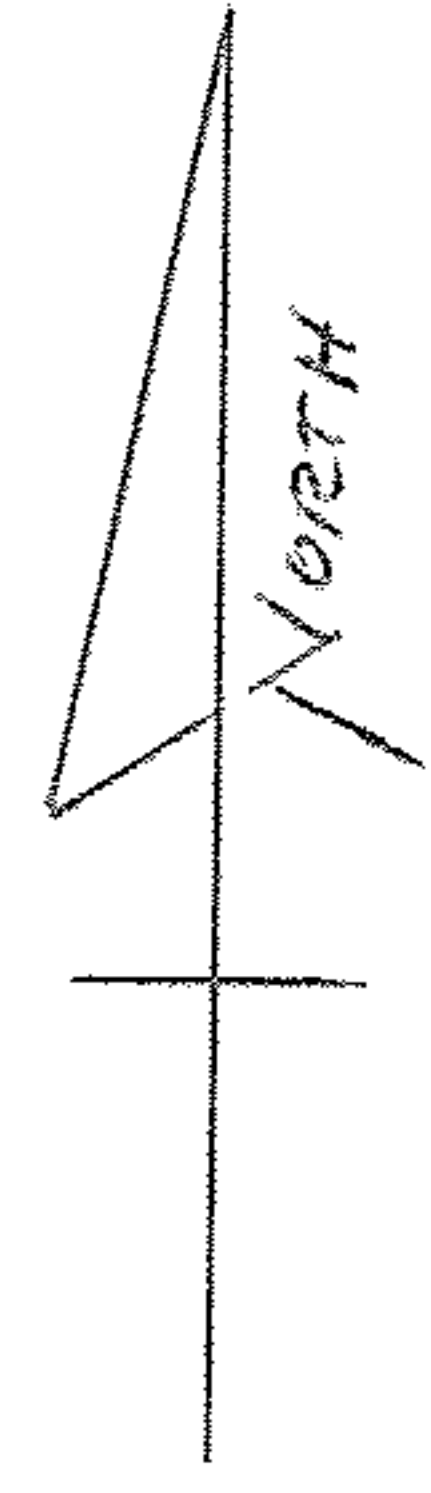
5066.7

3140.54

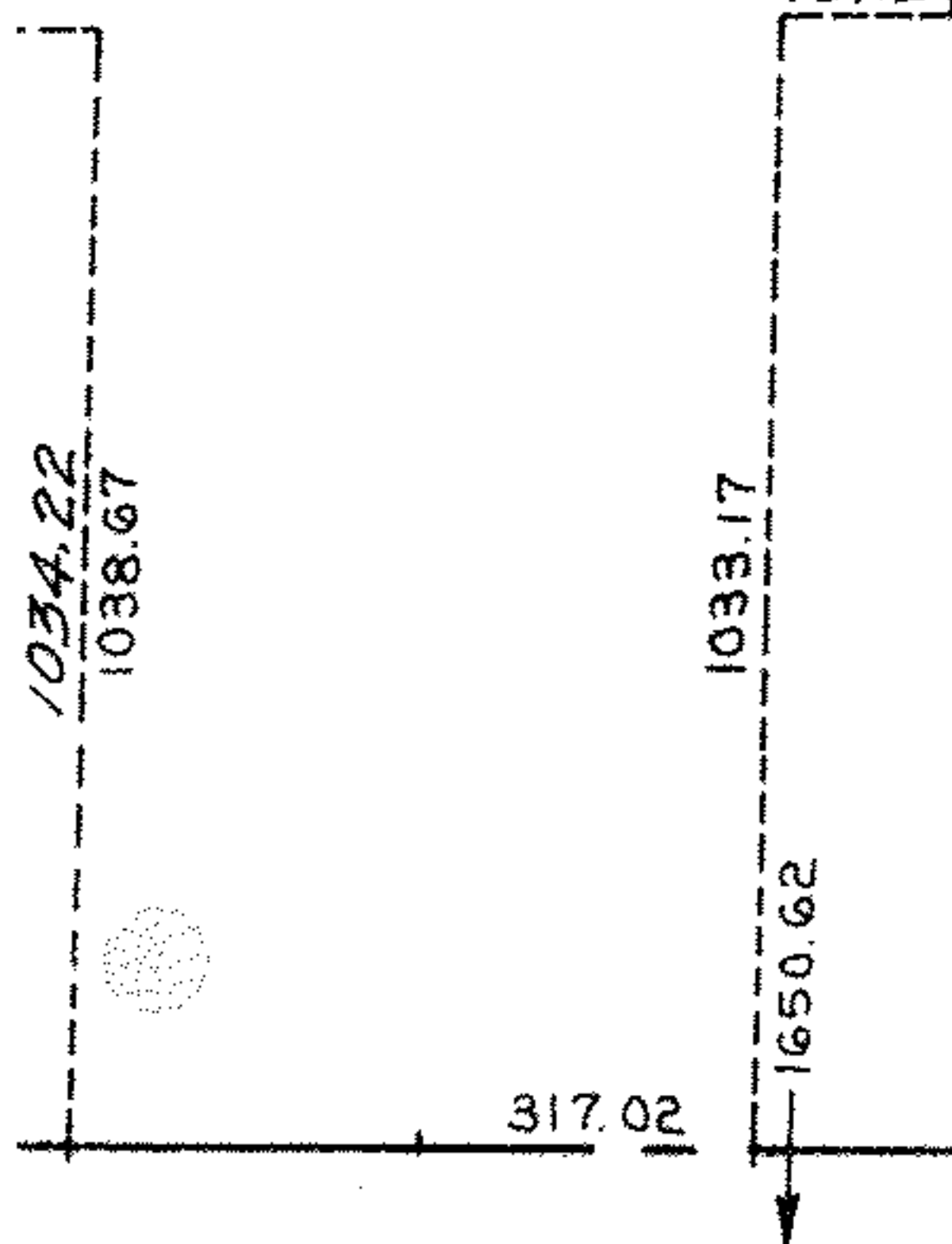
-004
38.00 A. 28.73 A.

3140.61

-007
29.00 A.



SEE SURVEY
 N. R. HURA.
 C.L. 1:1MF
 DU 1375/003
 PRIOR INST. REF.
 JUDGEMENT 92CV 108683
 JOURNAL 619/289



396.55

-009
9.27 A.

-006
11.30 A.

605 A

-005
3.00 A.

215.5

215.45

.39

4538

210

2472

5-12-95
#20948

APPROVED
 LORAIN CO.
 MAP DEPT.
 DATE 7-18-94
 PAGE 7-A
 BY C.E.F. T-Morgan
 VOID AFTER 20948

24