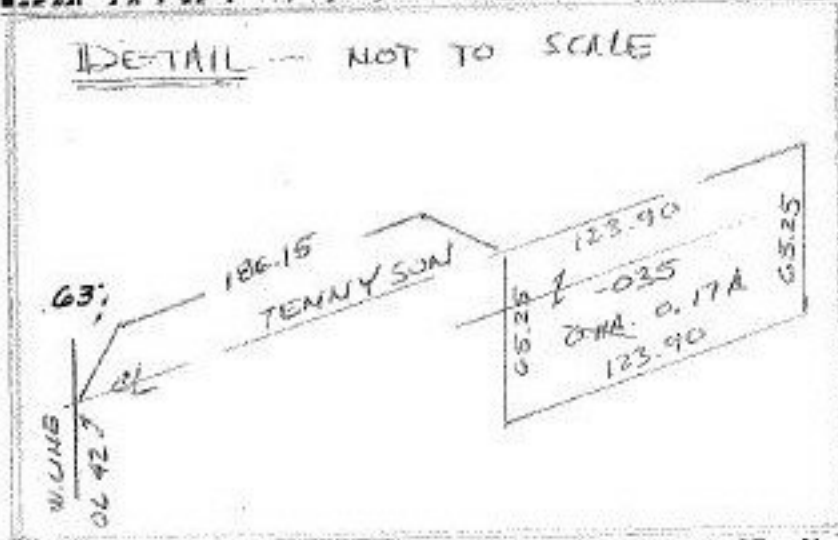
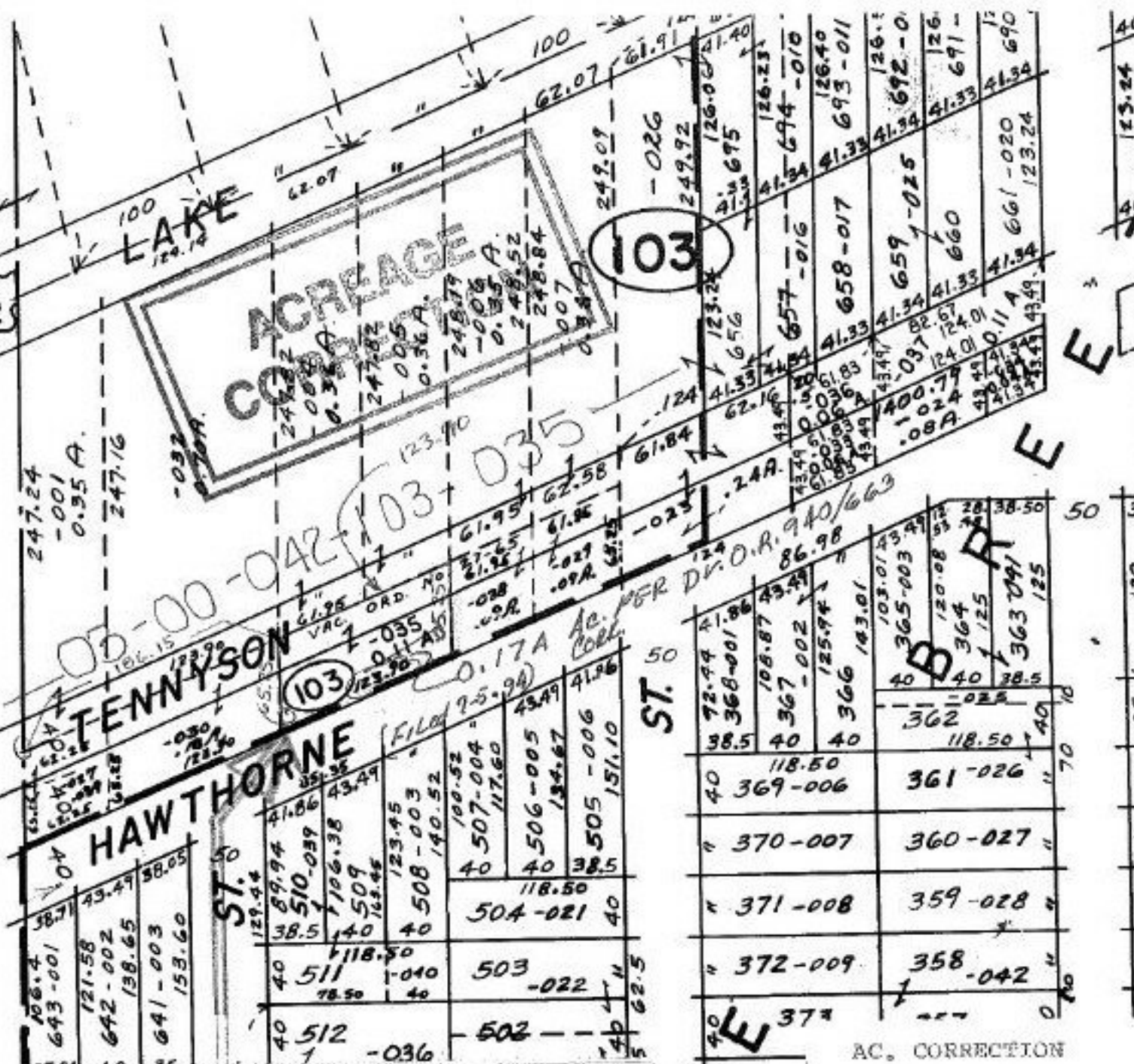


SEE 3-00-043

6/2



40	633	111.62	40	40	520-016	494	40	70
45	632		45	45	521	493-035	45	70

40	372-99	41.86	40	40	368-001	86.98	40	120
40	367-002	125.94	40	40	366	183.01	40	120
40	369-006	118.50	40	40	361-026	118.50	40	120
40	370-007	360-027	40	40	371-008	359-028	40	120
40	371-008	359-028	40	40	372-009	358-042	40	120
40	374		40	40	375		40	120
40	376		40	40	377		40	120
40	378		40	40	379		40	120
40	380		40	40	381		40	120
40	382		40	40			40	120

AC. CORRECTION
03-00-042-103-
O.R. 940/663

APPROVED
LORAIN CO.
MAP DEPT

DATE 8-1-94

PAGE 3-00-042A

BY CAROLYN
FRANCIS

20941-A

SPN 9-14-94
20941-A