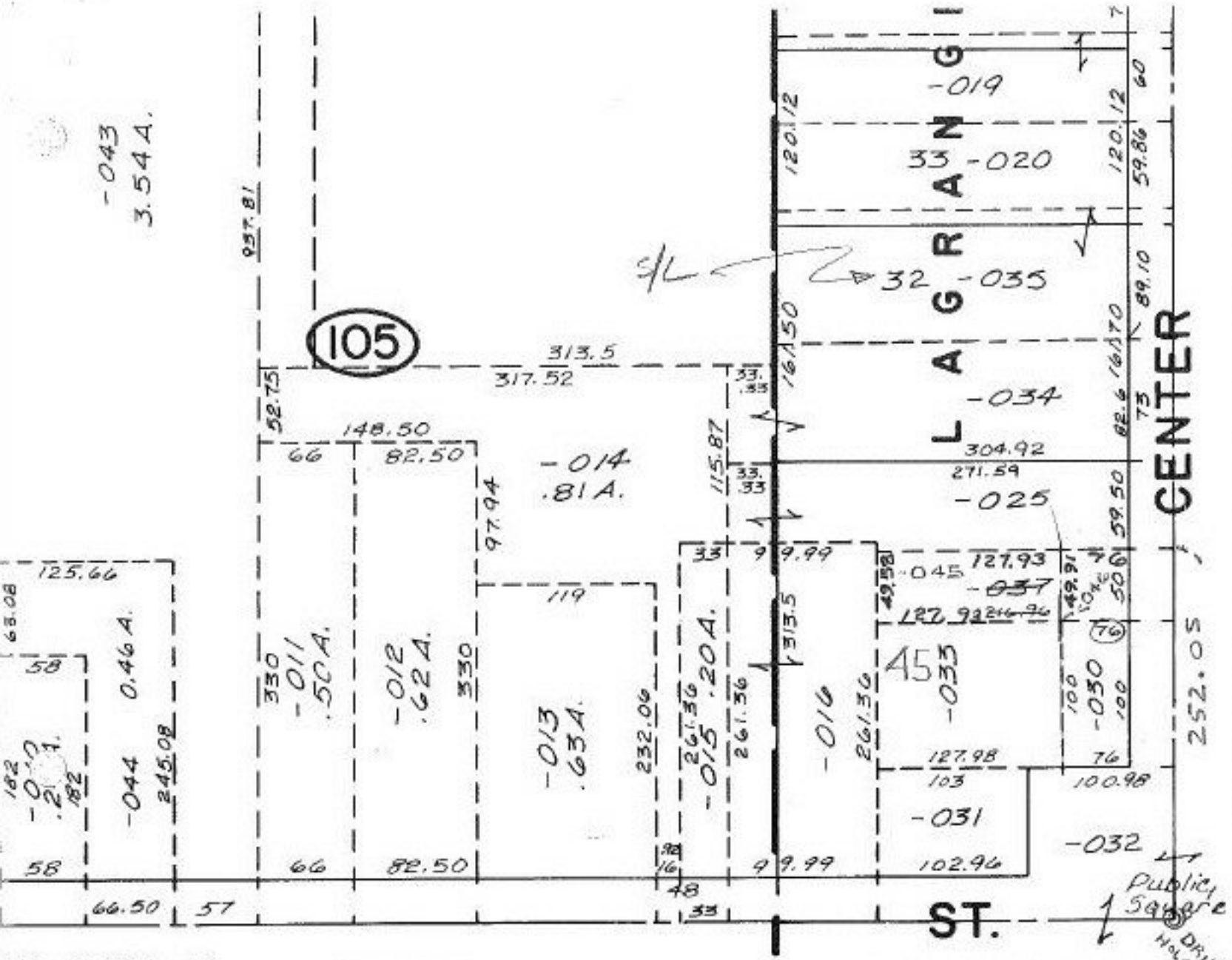


-043
3.54A.



00-056-B

MAIN

P.P.NO. 15-00-045-105-
 PRIOR INST: O.R.90/1
 CLOSURE: C=1:66,370
 SURVEYED BY: LAUNDON, SIMON,
 CAHL & ASSOC.

TWP.

E. 1/2 LOT 45

AUG 2 1994
 20917
 APPROVED
 LORAIN CO.
 MAP DEPT.
 DATE 7-7-94
 PAGE 15-00-045.B
 BY CAROLYN
 FRANCIS
 VENDOR # 20917